

American Medical Women's Association

2026 Awards

Presidential Recognition Award – Caitlin Bernard, MD, MSCI, FACOG



Dr. Caitlin Bernard is a Complex Family Planning fellowship-trained Obstetrician and Gynecologist and Associate Professor of Clinical OBGYN at Indiana University School of Medicine. Following the overturn of Roe vs Wade, Dr Bernard gained national attention after speaking out about the real-world impact of newly enacted abortion bans, including the impact they have on children who become pregnant as a result of rape. Her advocacy sparked intense backlash from politicians, as she became the face of the physicians being harassed, persecuted, and prosecuted for providing abortion care in a post-Roe America. Dr. Bernard has become one of the most prominent voices defending the right to abortion access, while continuing to provide life-saving care to patients across the Midwest.

Presidential Recognition Award – Jessi Gold, MD, MS



Jessi Gold, MD, MS, is the inaugural Chief Wellness Officer of the University of Tennessee System and an associate professor in the Department of Psychiatry at the University of Tennessee Health Science Center. She is a fierce mental health advocate and highly sought-after expert in the media on everything from burnout to celebrity self-disclosure. Dr. Gold has written widely for the popular press, including *The Atlantic*, *InStyle*, *Slate*, and *Self*, and her book, *HOW DO YOU FEEL?* is a national bestseller. In her clinical practice, she sees health care workers, trainees, and young adults in college. A graduate of the University of Pennsylvania (with a degree in anthropology), the Yale School of Medicine, and the Stanford University Department of Psychiatry, she believes vulnerability can change the culture of medicine, which is why she shares her own story and advocates for others to share theirs.

Elizabeth Blackwell Award – Elena Fuentes-Afflick, MD, MPH



Elena Fuentes-Afflick, MD, MPH, is the Association of American Medical Colleges' (AAMC) Chief Scientific Officer. Before joining the AAMC, Dr. Fuentes-Afflick served as professor of pediatrics and vice dean at the University of California, San Francisco. Her scholarly work has focused on Latino health, acculturation, immigrant health, health disparities, faculty misconduct, and diversity in academic medicine. An elected member of the National Academy of Medicine and the American Academy of Arts and Sciences, she received the Joseph W. St. Geme, Jr. Leadership Award from the Federation of Pediatric Organizations. Dr. Fuentes-Afflick earned her undergraduate and medical degrees at the University of Michigan and a master's degree in public health from the University of California, Berkeley. She completed her pediatric residency and chief residency at UCSF, followed by a research fellowship at the UCSF Philip R. Lee Institute for Health Policy Studies.

Women in Science Award – Melissa A Simon, MD MBA MPH



Dr. Simon is the Gardner Professor and Vice Chair of Research in the Department of Obygn at Northwestern Feinberg School of Medicine. She is Founder/Director of the ELEVATE Lab and the Chicago Cancer Health Equity Collaborative. She is the Lurie Comprehensive Cancer Center's Associate Director for Community Outreach and Engagement. She is a member of the National Academy of Medicine and Association of American Physicians for her substantial contribution to health equity scholarship and women's health. She received the Presidential Award in Excellence in Science Mathematics and Engineering Mentorship and is a Presidential Leadership Scholar. She is a former member of the US Preventive Services Task Force and the NIH Office of Research in Women's Health Advisory Committee. She is an Associate Editor for *JAMA* and is a member of the CDC Community Preventive Services Task Force. She is the President-Elect of the American Gynecological and Obstetrical Society.

Lila A. Wallis Women's Health Award – Sharonne N. Hayes, MD, FACC, FAHA



Dr. Sharonne N. Hayes is Professor of Medicine and founded and maintains an active clinical practice in the Women's Heart Clinic at Mayo Clinic where she also directs the SCAD Clinic. Dr. Hayes has long advocated for the advancement of women's health and sex-based medicine within the field of cardiology and has focused her practice and research on heart disease in women, patient-initiated research, spontaneous coronary artery dissection (SCAD), health equity, and participation of women and minorities in medical research. She has led national initiatives aimed at improvement of healthcare and reduction of health disparities among women and helped develop the NHLBI's Heart Truth ("Red Dress") campaign. With WomenHeart: The National Coalition for Women with Heart Disease, Dr. Hayes coordinates the annual Science and Leadership Symposium for Women with Heart Disease, aimed at preparing heart disease survivors to be advocates and educators for other women.

Bertha Van Hoosen Award – Bisi Alli, DO, MS, DipABLM, FAMWA, FACP; LSSBB



Dr. Bisi Alli, dual board-certified in Internal Medicine and Lifestyle Medicine, is the newly appointed treasurer and two-term board member of the American Medical Women's Association (AMWA). With over a decade of clinical experience, she is dedicated to advancing patient care through improved processes and efficient healthcare systems, utilizing her Lean Six Sigma Black Belt expertise.

In her academic roles as an Associate Clinical Professor at Creighton University and Assistant Professor at the University of Arizona College of Medicine–Phoenix, Dr. Alli mentors future physicians, focusing on patient safety and lifestyle interventions for better health outcomes.

Her leadership in medicine has earned her the 2024 AMWA Inspire Award and the 2017 Early Career Physician of the Year Award from the American College of Physicians. Dr. Alli is also the author of *Tayo* and the *Super Produce Pals*, a children's book promoting healthy eating. Visit: www.wellnestmedicine.com/books

Esther Pohl Lovejoy Award – Eleanor Reid, MD, PhD



Eleanor Anderson Reid, MD, PhD, is an Assistant Professor of Emergency Medicine at Yale University and Associate Medical Director of the Yale Shoreline Emergency Department. Her clinical and academic work centers on dignity, safety, and relief of suffering in moments of crisis. Dr. Reid leads international collaborations to build emergency and palliative care capacity in resource-limited settings, including Ethiopia, Uganda, Greece, and Peru. She develops context-specific models for serious-illness communication, symptom control, and end-of-life care in emergency departments, with a focus on expanding access for patients and families who would otherwise have none. She also serves as the American College of Emergency Physicians (ACEP) Ambassador to Uganda and Deputy Ambassador

to Greece, supporting the development of emergency care systems. She is recognized by trainees and colleagues alike for mentoring women in medicine and for advancing compassionate, equity-focused medical care.

Camille Mermod Award – Mark Linzer, MD



Dr. Mark Linzer is Hennepin Healthcare's Department of Medicine Stillman Endowed Chair and Director of Education, Mentorship and Scholarship, Professor at University of Minnesota Medical School and Director of the Institute for Professional Worklife. He co-founded the Association of Chiefs in General Internal Medicine (ACGIM) and taught at Einstein, Duke, Tufts, and University of Wisconsin. As an involved clinician, teacher, and researcher, he received teaching awards at Duke and Wisconsin, the SGIM Glaser Award and the American Public Health Association's Donabedian Healthcare Quality Award. Dr. Linzer is devoted to making healthcare systems safer and more sustainable for clinicians and their patients. His national and international projects in burnout reduction have defined the impact of

physician burnout in patient care and identified remediable work conditions to improve outcomes for clinicians and patients. Dr. Linzer received his undergraduate degree from Oberlin College and MD from Johns Hopkins.

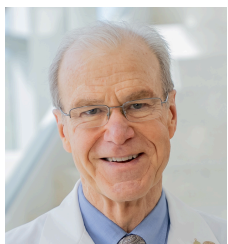
Early Career Physician Award – Melissa Swee, MD, MME, FASN, FAST



Dr. Melissa L. Swee is an Assistant Professor of Medicine at the University of Iowa and the Iowa City VA Health Care System, where she serves as Director of the VA Quality Scholars Program and Director of Telenephrology. As a nephrologist and health services researcher, her work focuses on improving kidney care delivery for rural Veterans through innovation in telehealth, implementation science, and quality improvement. Dr. Swee leads projects examining disparities in chronic kidney disease management, adoption of evidence-based therapies, and virtual specialty care models. She is supported by an NIH K12 Career Development Award and has been recognized for her leadership in advancing patient-centered, equitable kidney care. Dr. Swee is passionate about mentorship,

medical education, and promoting women in academic medicine.

Dr. Larry Zaroff Man of Good Conscience Award – Terence R. Flotte, MD



Terence R. Flotte, MD is the Elisabeth Chair for the Dean of Medicine, professor of genetics and cellular medicine and pediatrics, executive deputy chancellor, provost and dean of UMass Chan Medical School. A pediatric pulmonologist and gene therapy researcher, Dr. Flotte previously led the Powell Gene Therapy Center and served as chair of Pediatrics at the University of Florida prior to moving to UMass as Provost-Dean in 2007. In over 18 years there, Dr. Flotte has more than doubled the incoming medical school class size, founded two new regional campuses and nine new academic departments. Working to enhance gender equity in leadership, Dr. Flotte has appointed 15 women chairs (currently 44% of chairs), an increase from one woman chair in 2007. Over this same time, the number endowed chairs at

UMass Chan increased from 26 (11.5% women) to 82, one-third of whom are women.

Award for Advocacy in Advancing Women Physicians and the Health of Women – Christina Mangurian, MD, MAS



Dr. Christina Mangurian is Vice Dean for Faculty & Academic Affairs at the UCSF School of Medicine and the Lynne and Marc Benioff Endowed Chair of Psychiatry. Dr. Mangurian actively works to promote fairness in academic medicine, and is the Director of the UCSF ARCHES Program. Dr. Mangurian has conducted several studies related to caregiving, well-being, and workforce policies to promote retention of women in the workforce. Her work has been published widely in this area, including in the *New England Journal of Medicine*, *JAMA*, *Nature*, *BMJ*, and the *Harvard Business Review*. She has been widely recognized for her work, receiving UCSF's 2017 Chancellor's Award for the Advancement of Women; 2018 UCSF Distinction in Mentoring Award; 2022 UCSF Royer Award in Academic Psychiatry; and 2024 Harold S. Luft Award for Mentoring in Health Policy & Health Services Research.

Exceptional Mentors

Leslie F. Algase, MD, FACP

Madelyn Bahr, MSW

Saritha Beauchamp, MD, MPH

Melanie Cree, MD, PhD

Wendi Wills El-Amin, MD

Cherie P. Erkmén, MD

Marina Frimer, MD

Tracey L. Henry, MD, MPH, MS

Susan L. Ivey, MD, MHSA

Angela C. Johnson, MD, FACP

Joanna G. Katzman, MD, MSPH

Mark Linzer, MD, MACP

Geraldine E. Ménard, MD, FACP, FHM

Gail E. Mizner, MD, FACP, AAHVMS

Darilyn Moyer, MD, MACP, FAMWA

Natalie Nokoff, MD, PhD

Cynthia S. Samra, MD

Sara Sar, DO

Tina Simpson, MD, MPH

Caroline E. Sloan, MD, MPH

Kizer Stovall, MD,

Shenifa M. Taite, Ed.D

Katharine Elizabeth Zuckerman, MD,

MPH, FAAP

Resident Division Awards

Susan Ivey Courage to Lead Award & Charlotte McGuire Mentorship Award – Joanna Georgakas, MD



Joanna Georgakas, MD, is a Geriatric Psychiatry Fellow at Mass General Brigham. She received her BA from Middlebury College, where she majored in Neuroscience and Gender, Feminist and Sexuality Studies. She earned her medical degree from Brown University and subsequently completed her psychiatry residency there, serving as Chief Resident. Joanna has been an active member of AMWA since 2018. Her contributions include co-founding the Brown University chapter, serving on the Gender Equity Task Force and creating the podcast series *Doctor and ____: Multidimensional Women in Medicine* to elevate the narratives of women in medicine.

Elinor T. Christiansen Altruism Award – Vaishnavi Jagat Patel, DO



Dr. Vaishnavi J. Patel is an early-career family medicine resident passionate about women's health, service, and advocacy. She serves on the Executive Board of AMWA's Gender Equity Task Force, where she helps advance initiatives that support women in medicine, and is an ambassador for the Gold Humanism Honor Society. Her dedication to service has been recognized with the Lifetime Presidential Volunteer Service Award and the Eliza Lo Chin Unsung Hero Award. Patients and colleagues alike know her for her compassion, diligence, and commitment to caring for others.

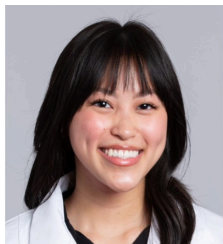
Susan Love Writing Contest & Vivian E. Shih Scholar – Oyepeju Abioye, MD, MSc



Oyepeju Abioye is a Nigerian-born physician and PGY-2 internal medicine resident at Allegheny Health Network in Pittsburgh, PA. She holds an MSc in Epidemiology and Biostatistics from the University of the Witwatersrand, South Africa, and is trained in oncology research and health equity scholarship. Her work centers on clinical trial equity, global oncology, and cancer disparities, with peer-reviewed publications and presentations at national oncology meetings. An AMWA ambassador, she founded Protocol & People, a digital oncology/science communication initiative that breaks down clinical trials for everyone. Her work has earned international recognition. As an aspiring oncologist, she is closing the gap between cancer research and who benefits from it at the bedside.

Medical Student Division Awards

Eliza Chin Unsung Hero Award – Courtney Chau



Courtney Chau is a third-year medical student at the Icahn School of Medicine at Mount Sinai. She has been a member of AMWA since 2019. Before her current role as a Medical Student Division Conference Chair, and has served roles as Premedical Division President and Premedical Division Conference Chair. She is also the founder and current student chair of AMWA's Domestic Violence Prevention Working Group. She is grateful for the mentorship and leadership opportunities AMWA has afforded to her. Her academic and clinical interests include inflammatory skin diseases, intimate partner violence intervention in healthcare, public health, and data science.

Medical Education Cycle 1 – Nidhi Shah



Nidhi Shah is a second-year medical student at the Augusta University/University of Georgia Medical Partnership. She is passionate about promoting equity in medicine and advancing opportunities for women in healthcare leadership, with the overarching goal of making healthcare more accessible and inclusive for all patients. She is currently most interested in pursuing pediatric oncology because of the chance to make a lasting difference in children's lives.

Medical Education Cycle 1 – Julie Paska



Julie Paska was born in Carol Stream, IL, to an immigrant Polish family. She has lived in the Chicagoland area her entire life and is a lover of all things Chi! She is a graduate of Northwestern University where she majored in biological sciences and graduated with magna cum laude honors. During this time, she also became heavily involved in AMWA leadership and medical research; she presented one of her systematic reviews and meta-analyses on women's musculoskeletal health at an orthopedic surgery research symposium in Las Vegas, Nevada in September. Currently, she is a first-year medical student at Northwestern University Feinberg School of Medicine. She looks forward to continuing to thrive academically with AMWA's support!

Medical Education Cycle 2 – Ayleen Shaban



Ayleen Shaban is a fourth-year medical student at Nova Southeastern University Dr. Kiran C. Patel College of Osteopathic Medicine, planning to pursue a career in neurology. Medical outreach, both domestically and internationally, has been especially meaningful and has reinforced the importance of listening, cultural humility, and meeting patients where they are. She has also served as President of AMWA at her institution, an experience that allowed her to collaborate with peers and support a strong sense of community. She is grateful to receive the AMWA Medical Education Scholarship and appreciates the organization's continued support of her education and professional growth.

Medical Education Cycle 2 – Amina Nasari



Amina Nasari is a medical student at the CUNY School of Medicine with a strong commitment to women's health, global health advocacy, and mentorship. Inspired by her Afghan heritage, she strives to support women whose educational opportunities have been disrupted or restricted. She has organized multidisciplinary panels on humanitarian crises, led AMWA initiatives focused on women's health education, and mentored Afghan refugee students interested in healthcare careers. Her work centers on creating accessible pathways, fostering representation, and supporting women as they navigate systems not designed for them. She hopes to build a career rooted in advocacy, empowerment, and service.

Linda Brodsky Essay Award – Erin Lee



Erin Lee is a second-year medical student at the Medical College of Georgia at the Augusta University/University of Georgia Medical Partnership. With a dual background in Chemistry and Art from Carnegie Mellon University, she operates at the convergence of evidence and expression. She views science as the tool that expands the world and art as the vehicle to understand it, using creative media not just as an outlet, but as a necessary mode of communication and connection. Her academic interests lie in advocacy, basic science research, and the intersection of medicine and the humanities. In her free time, she explores the world through photography, baking, and the demands of her cat, Gnome.

Heller Outstanding Branch Award – Orlando College of Osteopathic Medicine (Region 4)



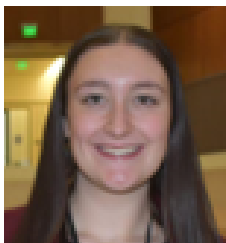
Premedical Student Division Awards

Mental Health Advocacy Award – Dana Shuaibi



Dana Shuaibi is a graduate of the University of Illinois at Urbana-Champaign where she earned a B.S. in Interdisciplinary Health Sciences with a concentration in Health Diversity. She is currently a research coordinator at Northwestern University with plans to attend medical school. She was previously AMWA's Premedical Division Awards Chair, Region 7 Director, President-Elect, and President, and also interned for AMWA. Along with some friends, Dana started a student organization in college called Positive Pre-Meds that aims to reduce mental health stigma in medicine, educate our community on various mental health topics, and create a space where pre-health students are not competing against each other but are instead on a journey together. Dana has also participated in a research that examined suicide risk in military/veteran populations, a vulnerable patient group that is underrepresented in research on mental health outcomes.

Eliza Lo Chin Unsung Hero Award – Jasmine Max



As former President and Vice President of Florida State University's Premedical Branch, Jasmine Max helped rebuild and reenergize the branch on campus and within AMWA national. She led a undraiser for FSU gunshot victims, founded the Service Project Committee, established partnerships with local nonprofits (homeless safety shelter, Big Brothers Big Sisters of the Big Bend), and organized AMWA's 2025 Region 3 Conference - a high-impact event uniting trainees around the theme of life beyond medicine. Outside of AMWA, she advances perinatal mental health at FSU's Center for Behavioral Health Integration, works clinically as a radiology medical assistant at Tallahassee Memorial Healthcare, uplifts women leaders through the Organization of Women Leaders in the FSU Women's Student Union, and serves as a Board Member of the nonprofit Add Us Inc.

Premedical Student of the Year Award – Sophia Hai



Sophia Hai is a premedical student at the University of Southern California pursuing a Master of Public Health. She graduated from USC in Spring 2025 with a B.S. in Human Biology and double minors in Health Care Studies and Performing Arts Studies. She joined AMWA and the USC Chapter of AMWA in Fall 2021 and has held multiple leadership positions in both organizations, serving as the National Liaison for the USC Chapter (2022–2025) and Region 2 Director, President-Elect, and President of the Premedical Division. Outside of AMWA, she is a Research Assistant in the USC Keck Artificial Intelligence in Medical Radiology (AIMR) Lab, where she works on radiomics research to improve the diagnostic precision of diseases such as breast cancer. Her career goals include matriculating into medical school for the 2026 entering class and pursuing a career as a physician dedicated to advancing women's health.

Most Impactful Diversity & Inclusion Advocacy/Initiative Award – Madeline Markham



Madeline Markham is a senior at Florida State University majoring in Biology and Psychology. She is a second term Secretary of the FSU Undergraduate AMWA Branch and contributes nationally through the Advocacy and Global Health Committees. She has been a dedicated AMWA member since freshman year. Beyond AMWA, Madeline is Service and Outreach Chair for Noles in Med, a Student Foundation Trustee, and Co-President and Founder of the Rare Ribbon Association, as well as a Volunteer Committee member for the Best Buddies Friendship Walk. She also works as a student-athlete tutor, an Engage 100 Leader, and a medical assistant, and serves as a research assistant while volunteering with Tallahassee Memorial Hospital, Big Bend Hospice, and the Kearney Center.

Premedical Branch Member of the Year Award – Natalia Maya



Natalia Maya is an Honors Health Science major at the University of Florida, pursuing a certificate in Artificial Intelligence in Public Health and contributing to AI-driven Type 1 Diabetes imaging projects as a UF Artificial Intelligence Scholar. As AMWA Premedical External Relations Chair and Programming Committee member, she helped lead national partnerships and programs (MCAT and medical school application workshops, Premedical Journal and blog). Within UF AMWA, she has served as Conference Chair, Outreach Director and Co-President, expanding membership and strengthening professional development programs and collaborations. She is also the Founding President of the Children's Future Association and a longtime board member and competitor with HOSA–Future Health Professionals.

Active Branch Award – University of Florida



UF AMWA Premedical Chapter has had a landmark year. They expanded their annual Women Rising in Medicine Conference into the 2025 Region 4 AMWA Conference, bringing premedical and medical students together for the first time in a joint program with physician keynotes, trainee panels, clinical skills workshops, and a research poster session. During Recruitment Week, they tripled their active membership and drew over 100 attendees to the first general body meeting of the year. They built a partnership with UF College of Medicine, including a mentorship program, school tours, admissions officer roundtable, and suture clinic.

Branch Event Award – Brown University



Brown University AMWA's "Protection Against Cold" care package event partnered with Refugee Dreams Center a student club for tutoring refugee youth to create 100 care packages for refugees, filled with hand lotion, hot chocolate, hand warmers, lemon and ginger tea, purell, cough drops, and tissues. The care packages were personally delivered to a women's class at the Refugee Dreams Center where they learned from the director, a refugee herself, that these care packages were a rare and deeply appreciated gift. Other branch projects have included a mentorship programs, panel discussions, and course advising office hours.

Humanitarian & Outstanding Branch Awards – Florida State University



This past year, FSU AMWA expanded its community impact, welcomed 30 new national members, launched a fee assistance scholarship for first-gen students, organized the 2026 AMWA Region 4 Conference, and strengthened engagement through career panels, skills workshops, and advocacy events. They continue to partner with the Kearney Center and formed new partnerships with the WEE Diaper Bank and Oasis Women's Center. They co-hosted EmpowerHER and a Period Packing Party to address period poverty, and led the FSU Strong Fundraiser and Plates of Care, raising nearly \$10,000 for families affected by on-campus tragedy.

National Member & Physician Recruitment Branch Awards – University of Southern California



USC AMWA Premedical Division is deeply committed to community service and women's health advocacy through hands-on volunteering and local partnerships. This year, members worked with the LA Downtown Women's Center to support women experiencing homelessness (meal preparation, donations, and outreach initiatives), continued collaborations with the Children's Hospital of Los Angeles (crafting personalized "get well" cards for pediatric patients), and participated in the American Cancer Society Making Strides Against Breast Cancer Walk. Restaurant fundraisers have raised funds for member-nominated charities and philanthropic engagement.