

#AMWA2023



amwa-doc.org/amwa108



AMWA108 MEETING APP



We are using Whova as the official meeting app for up-to-date information on the agenda, announcements, attendee networking and community. You have received an email as an attendee to download the app. For a detailed user guide for the app, please use the QR code to the right.



RAMADAN



Ramadan and the AMWA Annual Meeting. Please scan the link on the left for resources available to AMWA meeting attendees.



THE WHITE HOUSE
WASHINGTON

March 23, 2023

I offer my congratulations to the American Medical Women's Association on your 108th anniversary.

The full participation of women is a foundational tenet of democracy. Throughout our country's history, women have been on the frontlines, fighting for and securing equal rights and opportunity. That fight extends to pioneering women who have opened the doors of opportunity for generations of women in the medical profession.

For more than a century, your efforts have supported women in medicine and brought them to the decision-making table. And your advocacy for equity in health care has helped protect reproductive rights at this critical time in our Nation's history.

Your work to uphold the dignity and respect of women in medicine is a reminder of how, here in America, we see one another, we hear one another, and we strive to take care of one another. Now more than ever, we need medical professionals who reflect the full diversity of the patients they serve—the full diversity of our Nation.

As you gather together this year in Philadelphia for your annual meeting and to celebrate this anniversary, may you be filled with pride in all the progress you have achieved for women in medicine.

A handwritten signature in black ink, appearing to read "Joe Biden".

AMWA PRESIDENT



To All of Our AMWA Members and Supporters,

When asked to reprise my position as president of AMWA, it was a very easy YES! My career as a physician was made possible by those who came before me. This was an opportunity to “pay it forward.” AMWA’s history is one of advocacy, empowerment, and passion. AMWA believes that the

health of our communities and families depends on strong, diverse leaders and works to ensure that all have the ability to reach their goals. The year has been an incredibly active one as AMWA has partnered with other healthcare groups to create the Reproductive Health Coalition. Representing over 150 million practitioners and allies, we work to ensure reproductive care as basic health care in every state and for everyone. Members in every state have taken

on advocacy issues at their state level and remain steadfast in their goals to ensure that training in reproductive health for learners can be continued. AMWA has worked with the White House on issues concerning hunger and nutrition, reproductive health care, and community health. We continue in our support of learners with grants to support ERAS application fees for medical students, travel grants, and lodging for electives. As we attend our first in person meeting in 3 years, I look forward to the conversations and networking that we will have, the new information that will be shared, and the new friends we will make. With every meeting, I reaffirm my belief that AMWA is a medical organization like no other. AMWA remains a meaningful, powerful, essential organization as much now as it was in 1915. Thank you for the passion you bring to AMWA! It has been an incredible year to be your president.

Warm regards,
Theresa Rohr-Kirchgraber, MD, FACP, FAMWA

Theresa Rohr-Kirchgraber, MD, FACP, FAMWA is a California native, with a degree in chemistry from California State University, Long Beach, a medical degree from Weill College of Medicine at Cornell, and a residency in Internal Medicine at University Hospitals of Cleveland. Dr. Rohr-Kirchgraber is a professor of medicine at AU/UGA Medical Partnership in Athens, GA. Prior to that, she served as Executive Director, Indiana University National Center of Excellence in Women’s Health.

AMWA PRESIDENT-ELECT



Dear AMWA Members and Supporters,

Welcome to the 108th Annual Meeting. Congratulations to the planning team for bringing us together here in the great city of Philadelphia, where I lived for 15 years. It’s wonderful to finally be back together live and I hope you will take full advantage of all the amazing sessions this weekend, as well as the opportunities to get to know one another and make new

friends and colleagues.

As I take the helm of AMWA, I reflect on my own career path, first as a clinician, professor and researcher in academic medicine and more recently as a chief scientific officer within the pharmaceutical industry. I am excited to see what we can do together as we look

at healthcare from a 360-degree perspective. Diversity, innovation, empowerment of women in medicine — and women overall — and advancing women’s health are key interests of mine.

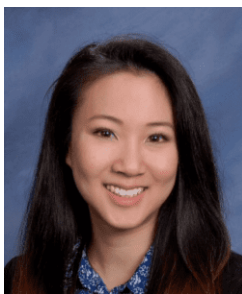
I’m very much looking forward to my year as AMWA President and thank you for the opportunity to lead this amazing organization. My goals for the year are to continue AMWA’s well-established platform as a leading voice for women in healthcare and the health and reproductive rights of women. I believe we have an opportunity as an organization to help move the women’s health agenda and insist on health equity for all individuals. I’m excited to continue along in this journey with all of you!

All the best,
Elizabeth (Beth) Garner, MD, MPH

Elizabeth Garner, MD, MPH is currently Chief Scientific Officer of Ferring Pharmaceuticals, US. From 2019-2022, she was Chief Medical Officer (CMO) of ObsEva, and from 2014-2019, was CMO of Agile Therapeutics, where she led the FDA approval of the Twirla® contraceptive patch. Dr. Garner had previous roles at Myriad Genetics and Abbott Laboratories, and from 2007-2011 was on the Clinical Research team at Merck, where she led the Gardasil®9 HPV vaccine Product Development Team. Dr. Garner is on the boards of Kezar Life Sciences and Sermonix Pharmaceuticals. She is also on the board of the American Medical Women’s Association (AMWA).

Dr. Garner received joint M.D. and M.P.H. degrees from Harvard Medical and Public Health Schools and trained in obstetrics and gynecology at Brigham and Women’s (BWH)/Massachusetts General Hospitals, completing a fellowship in gynecologic oncology at BWH/Dana Farber Cancer Institute. She was a 2019 awardee of the PharmaVoice 100 Most Inspiring Individuals in the life sciences industry and is the 2022 recipient of the Women in Science Award from AMWA.

AMWA RESIDENT PRESIDENT



Dear AMWA Resident and Fellow members,

It has been such an honor serving as your AMWA Resident President for the 2022 - 2023 year. I know being a medical trainee comes with its own set of challenges when trying to balance work and life. However, I continue to be in awe of our members who are incredibly intelligent, talented,

and passionate. I hope that AMWA continues to serve as a source of professional and personal support for its members.

Best,
Monique Mun, MD

Monique Mun, MD is a child and adolescent psychiatry fellow at The University of Texas at Austin/Dell Medical School. She has served various AMWA leadership roles including being the previous AMWA Resident President-Elect, AMWA Resident Membership Chair for two years, and Vice-President of the AMWA chapter at Wayne State University School of Medicine.

AMWA STUDENT PRESIDENT



Dear AMWA Medical Student Members,

Thank you all for allowing me to serve as President of the AMWA Medical Student Division. Our medical student members are my biggest inspiration, and it has been an honor and a privilege to see all the incredible work that you do and to help our community strive to achieve its highest aspirations. As the year ends,

I pass on this role to my brilliant friend and leader, Julia Burns. She is a mover of mountains; AMWA is so lucky to have her at the helm. I cannot wait to see how she and her new team of leaders transform our community in the year to come, as they encourage us all to thrive and grow.

Yours with great respect and hope,
Alexandra Pincus, PhD

Alexandra Pincus (she/her) is an MD/PhD student in her final year at Oregon Health & Science University and looks forward to matching into Child Neurology and pursuing her passion for science in parallel with her medical training going forward. She has been with AMWA for seven years, and loves working with programs that affirm, engage, and empower her community of women leaders. In her free time, she loves to read, garden, and take naps with her cat.

AMWA PREMEDICAL PRESIDENT



Dear AMWA Premedical Members,

I have been so honored to serve as the President of AMWA's Premedical Division this past year. Thank you to all our members and branches who make AMWA what it is! You never cease to amaze me with your creativity, passion for advocacy, and commitment to equality in medicine. All of you phenomenal and accomplished

women in AMWA have kept me motivated over these past four years. Thank you to all of you for participating in our programs! I hope that AMWA has been a helpful resource and support during your journey. I am so excited to see the future of the Premedical Division as I transition to the Medical Student Division. Thank you for the pleasure of serving as President of the Premedical Division.

Warm regards,
Courtney Chau

Courtney Chau is a fourth-year undergraduate student at the University of California, Berkeley studying Nutritional Sciences: Toxicology with minors in Global Public Health and Data Science. Within AMWA, she is the current Premedical Division President and a Co-chair of AMWA's Domestic Violence Prevention Committee. Her independent honors thesis studied how United States physicians identify and respond when their patients may be experiencing domestic violence. She plans to pursue a degree in medicine and continue advocacy work in domestic violence prevention.

AMWA RESIDENT PRESIDENT-ELECT



Dear Residents and Fellows,

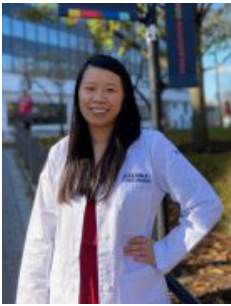
In this past year serving as President-Elect, I have had the pleasure of seeing first-hand what women-centric organizations can accomplish. Organizations such as AMWA are so important for hard-working, career-driven professionals like yourselves.

This year, I hope to continue serving as a voice for female residents and advocating for the initiatives that are important to you. There is still so much work to be done. Next year we hope to share with you all our ongoing research on diversity within the member body. I also hope to strengthen our involvement as mentors and mentees on AMWA's mentorship platform, and focus on the challenges of pregnancy, childbirth, and childcare as trainees. I look forward to getting to know you all more.

Sincerely,
Alexandra Goodwin, MD

Alexandra Goodwin, MD, is completing her Residency in Obstetrics and Gynecology at the Zucker School of Medicine at Hofstra/Northwell Health this June. She received her medical degree from Wake Forest University School of Medicine and her BA from Harvard University. She has been a member of AMWA since medical school as her school's Mentoring Coordinator, then serving as the Conference Co-Chair, Treasurer, and now President-Elect of the National Resident Division. She will be starting Fellowship at UCLA this summer in Female Pelvic Medicine and Reconstructive Surgery.

AMWA STUDENT PRESIDENT-ELECT



Dear AMWA Members,

It is with great enthusiasm that I step into my role as President of the AMWA Medical Student Division. This division consists of incredible medical students from around the country, who are working tirelessly on advocacy, education, and gender equity. It is truly an honor to represent and work alongside a community of women-identified students and allies, who will soon be prominent medical leaders.

While there is much to look forward to over the course of this upcoming year, it is important to recognize the substantial amount of uncertainty we, as women and gender-diverse minorities, face both within and outside of the healthcare community. With the overturn of Roe vs. Wade and many other rights to bodily autonomy curtailed, our role as AMWA is all the more important. I promise that AMWA Medical Student Division will continue to work tirelessly to empower medical students in all sectors of their identity and their communities. We will remain a grounding, positive force for women and gender-diverse students in medicine today, tomorrow, and every day going forward.

Sincerely,
Julia Burns, MS

Julia Burns, MS (she/her) is a DO student at the Philadelphia College of Osteopathic Medicine and currently serving as the AMWA National Student President-Elect. Previously she served AMWA as Region 3 Director and as her medical school's branch president for two years. She is passionate about advancing and empowering women through their journey both professionally and personally. In her free time, she enjoys trying new recipes, working out, and hanging out with her dog, Riley.

AMWA PREMEDICAL PRESIDENT-ELECT



Dear Premedical Members,

First, I want to express my gratitude to the entire Premedical Leadership team, especially my close friend & President, Courtney Chau, for such an amazing term!

It has truly been an honor getting to work with you all this past year.

In a chaotic year full of changes, both personally and nationwide, I am so appreciative to have had an organization as impactful as AMWA to help ground me and keep me focused on my one true goal; to help support and uplift other women.

I am forever grateful for all the life changing experiences AMWA has been able to provide me and I truly cannot wait to see where this next term takes me!

Sincerely,
Kaylee Travis, BS

Kaylee Travis is a first-year graduate student at The Ohio State University pursuing her MS in Human Anatomy. She graduated from The Ohio State University in May 2022 with a BS in Biological Sciences with a minor in General Psychology. Previously, Kaylee had served as a Region 6 Director and a Co-Conference Chair. Apart from AMWA, Kaylee works as a Research Assistant at the James Cancer Hospital Solove Research Institute and as a GTA for Ohio State's College of Medicine.

MWIA PRESIDENT



Dear Colleagues,

I bring you warm greetings as the President of the Medical Women's International Association (MWIA). I congratulate AMWA on their 108th Annual Meeting and the hosting of the North American Congress. North America holds a special place in the heart of MWIA as our region of birth.

I salute the courage and vision of Dr. Esther Pohl Lovejoy, the first President of the Medical Women's International Association, who also graciously provided her residence as the headquarters of MWIA at Madison Avenue in New York City in 1919.

I acknowledge the leadership of Dr. Connie Newman, the current MWIA regional Vice-President of North America and appreciate the dedication of our members in the region.

The MWIA triennial theme "One Humanity: Health Solutions through our Partnerships," is a statement of commitment to seeking solutions to the myriad of challenges the world is facing, including the crises of the COVID-19 pandemic, emerging conflicts, climate change, and cyberviolence.

I look forward to listening to the exciting line up of speakers and wish you a most rewarding Congress.

Warm Regards,
Eleanor Ann Nwadinobi, MBBS, EMA, FAAC

Eleanor Ann Nwadinobi, MBBS, EMA, FAAC is a medical doctor, women, peace, security and gender expert with a masters in Human Rights. She the first Nigerian to rise to the position of International President of the Medical Women's International Association (MWIA) in its over one hundred year existence. She sits on the boards of several National and International Organisations including Every Woman Treaty, a coalition advocating for a global Treaty to end violence against women and girls. As President of the Widows Development Organisation and Co - Founder of Blossoms of the Vine Fellowship, Dr. Nwadinobi has provided support to women for 30 years. She has authored several publications and received numerous awards of merit. Dr. Nwadinobi is happily married to Prince Okey Nwadinobi and is a mother and grandmother.

MWIA VICE-PRESIDENT OF NORTH AMERICA



Dear Colleagues,

As Vice President of the MWIA North American region, I welcome you to the 2023 MWIA NA Congress / 108th AMWA Annual Meeting.

I thank AMWA for hosting the Congress, and congratulate Drs. Eleanor Chu, Theresa Rohr-Kirchgraber, Eliza Chin and the Program Committee for creating this superb 4-day meeting. I wish to acknowledge and thank Dr. Eleanor Nwadinobi, MWIA President, for attending the conference and inspiring us with her commitment to global health and enthusiasm for solving health challenges through partnerships.

I have had the privilege of partnering with medical doctors from Canada, the UK and the US, who are dedicated to ending violence

against women and will join me in presenting the Sunday MWIA Advocacy Workshop. I thank these colleagues for broadening my understanding of challenges worldwide and working with me to develop global strategies to change damaging behaviors.

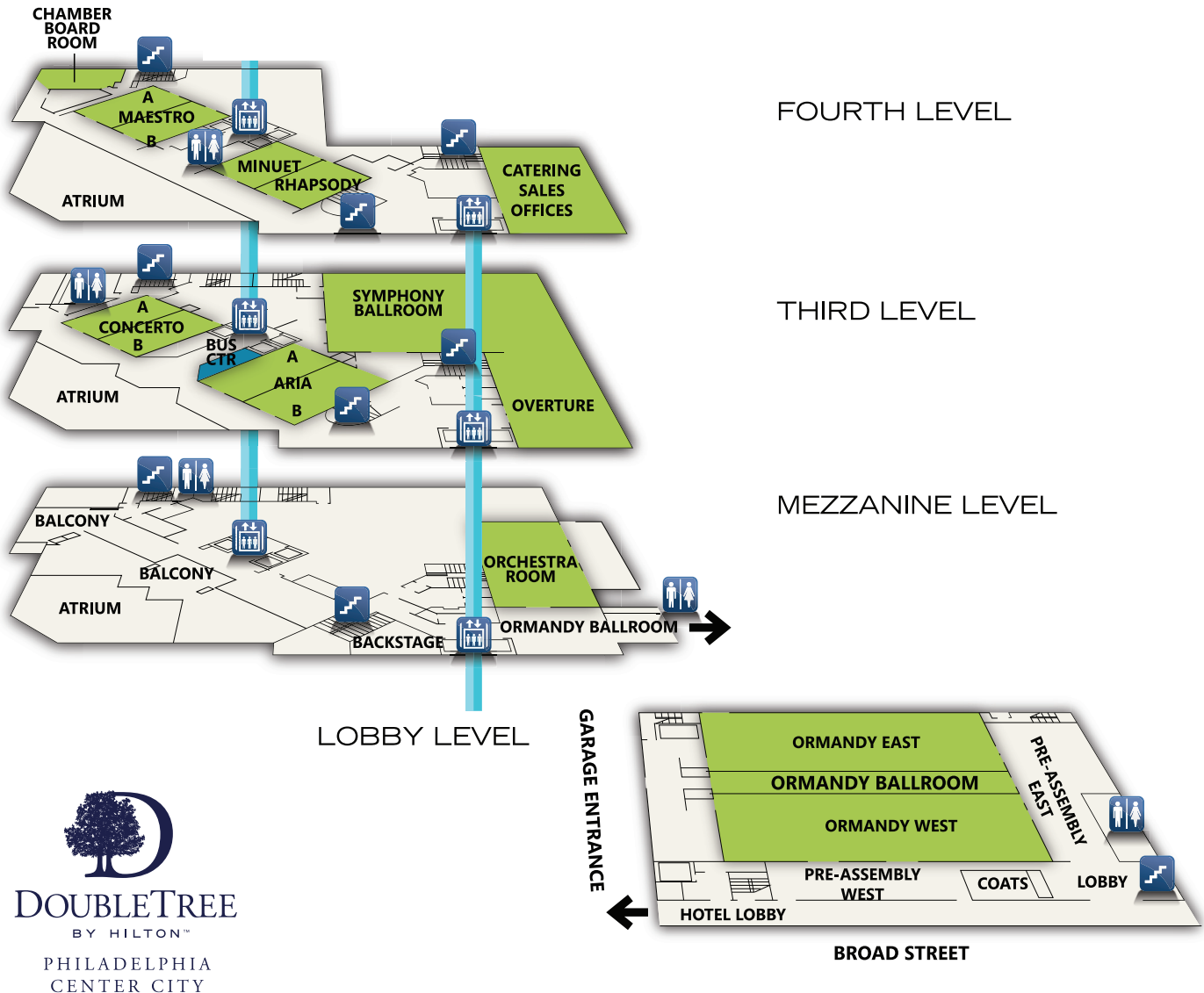
The 2023 MWIA NA Congress and AMWA Meeting convene doctors and students from the US, Canada, UK, Nigeria, and other countries. This diversity of leadership is anticipated to foster creativity, innovative ideas and collaboration. In my own experience, AMWA and MWIA meetings inspire me. I leave these meetings with new projects, novel approaches to my work as a physician, advocate and educator, and importantly, new friends.

I hope that you, too, will be inspired during the next four days. Enjoy the meeting!

Best wishes,
Connie Newman, MD, MACP, FAMWA

Connie Newman, MD, MACP, FAMWA, an endocrinologist, is MWIA Vice President, North America; Past President, AMWA; Adjunct Professor, New York University School of Medicine; member, FDA Endocrine and Metabolic Drugs Advisory Committee; and Chair, Board of Directors, Planned Parenthood, Northern, Central, Southern New Jersey. She is a leading proponent of sex and gender- based healthcare and co-edited How Sex and Gender Impact Clinical Practice: An Evidence Based Guide to Patient Care (Elsevier). She is an expert in cholesterol management and chaired committees for the AHA Scientific Statement on statin safety and Endocrine Society guidelines on dyslipidemia. She also writes and lectures on reproductive rights, health equity, challenges facing women in medicine, and burnout. Dr Newman has three children and lives in NJ and Oxford, UK.

DoubleTree by Hilton Center City Philadelphia (Thursday-Sunday)



Legacy Center Archives, Drexel University College of Medicine (Thursday Afternoon/Evening, 4-6 pm)

2900 West Queen Lane, Philadelphia

Meet there or in the lobby of the DoubleTree for group commute by Septa / car service at 3:10 pm.

To: Septa (towards Chestnut Hill) leaves Suburban Station at 3:47pm

From: Septa (towards Center City Philadelphia) leaves Queen Lane at 5:06 pm and 6:06 pm. Get off at Suburban Station.

The College of Physicians of Philadelphia and Mutter Museum (Friday Evening, 7-9 pm)

19 S 22nd St, Philadelphia

Meet there or AMWA shuttle service available from the DoubleTree. (6 -10 pm)



108th Annual Meeting
MWIA North American Congress
In-Person | Virtual | March 23-26, 2023

MEETING PROGRAM

Program Co-Chairs:

Eleanor Chu, MD
Theresa Rohr-Kirchgraber, MD



Eleanor Chu, MD
AMWA Program Co-Chair



Theresa Rohr-Kirchgraber, MD
AMWA President

Jointly provided by



INDIANA UNIVERSITY
SCHOOL OF MEDICINE

PREPARING **HEALERS**. TRANSFORMING **HEALTH**.

THURSDAY, MARCH 23

All times ET
*Non-CME Sessions



Mindy McManus, MEd, PCC

1:00 - 3:00 pm - Preconference Workshop: Coaching for Success in Healthcare Leadership

Mindy McManus, MEd, PCC
Certified Professional Coach with ICF, PCC

Deborah Munhoz, MS, PCC
Healthcare Leadership Coaching



Deborah Munhoz, MS, PCC

4:00 - 6:00 pm - Tour & Reception, Women in Medicine Legacy Archives*

7:30 - 9:00 pm - Paint Night*

FRIDAY, MARCH 24

All times ET
*Non-CME Sessions



Theresa Rohr-Kirchgraber, MD

8:30 am - 9:00 am - Welcome & Open Ceremony*

Theresa Rohr-Kirchgraber, MD
President, AMWA
Monique Mun, MD
Resident Division President, AMWA
Alexandra Pincus, PhD
Medical Student Division President, AMWA

Eleanor Ann Nwadinobi, MBBS
President, MWIA
Connie Newman, MD
Vice President North America, MWIA
Courtney Chau
Premedical Division President, AMWA



Eleanor Ann Nwadinobi, MBBS



Monique Mun, MD



Alexandra Pincus, PhD



Courtney Chau



Connie Newman, MD

amwa-doc.org/amwa108



108th Annual Meeting MWIA North American Congress

FRIDAY, MARCH 24

All times ET
*Non-CME Sessions



Joan Reede, MD, MS, MPH, MBA

9:00 - 9:30 am - Keynote Address: Efforts to Address Racial Inequities at Medical Institutions

Joan Reede, MD, MS, MPH, MBA
Dean for Diversity and Community Partnership, Harvard Medical School

9:30 - 9:50 am - The Benefits of Unique Characteristics in Leadership

Ana Maria Lopez, MD
Vice Chair, Medical Oncology; Chief of Cancer Services, Jefferson Health New Jersey
Sidney Kimmel Cancer Center, NCI Designated



Ana Maria Lopez, MD



Jessica Halem, MBA

9:50 - 10:10 am - Be Changed to Make Change: LGBTQ+ Health Equity

Jessica Halem, MBA
Senior Director, Eidos LGBTQ+ Health Initiative, University of Pennsylvania



Ojistoh Horn, MD

10:10 - 10:30 am - How Canada and Indigenous Peoples are Working Towards Health Equity

Ojistoh Horn, MD
Part-time Faculty Lecturer, Faculty of Medicine, Department of Family Medicine, McGill University



Pamela Davis, MD

10:30 - 11:30 am - Table Talk & Discussion: Advocacy in Action

11:30 am - 1:00 pm - Lunch, Exhibits, Posters*

Transformational Leadership

1:00 - 1:55 pm - Panel Discussion: Insights from Leaders Across Diverse Healthcare Sectors

Edith Mitchell, MD
Clinical Prof. of Medicine and Medical Oncology
Associate Director, Diversity Affairs
Director, Center to Eliminate Cancer Disparities
Sidney Kimmel Cancer Center at Jefferson

Pamela Davis, MD
Executive Medical Director
US Medical Affairs, Intercept Pharmaceuticals



Edith Mitchell, MD



Betty Sue Pace, MD

Betty Sue Pace, MD
Professor of Pediatrics and Biochemistry and
Molecular Biology, Francisco J. Tedesco
Distinguished Chair of Pediatric Heme/Onc.
Professor, Augusta University
Medicine

Nancy Spector, MD (Moderator)
Executive Director, Hedwig van Amerigen
Executive Leadership in Academic Medicine
(ELAM); Senior Vice Dean for Faculty
Prof. of Pediatrics, Drexel Univ. Coll. of
Medicine



Nancy Spector, MD



G. David Adamson, MD

2:00 - 3:00 pm - Clinical Hot Topics Session A

- **The New Hot Topic: Family-Forming Benefits**
David Adamson, MD, FRCSC, FACOG, FACS
CEO, ARC Fertility; Clinical Professor ACF at
Stanford University; Assoc. Clin. Professor, UCSF
- **Osteoporosis: Diagnosis and Challenges**
Shweta Akhouri, MD
Assist. Professor, Florida International Univ.
Herbert Wertheim College of Medicine

- **Menopause Management for the General Practitioner**
Sara Shihab, MD
Instructor in Medicine, Mayo Clinic, Arizona
- **Don't Drown In Your Email: Digital Efficiency for Physicians**
Nina Mingioni, MD
Professor of Medicine, Sidney Kimmel
Medical College, Thomas Jefferson Univ.



Sara Shihab, MD



Shweta Akhouri, MD

- **Women's Health is Environmental Health**
Lisa Nagy, MD
Vice Chairman, American
Academy of Environmental
Medicine



Lisa Nagy, MD



Nina Mingioni, MD

amwa-doc.org/amwa108



108th Annual Meeting MWIA North American Congress

FRIDAY, MARCH 24

All times ET
*Non-CME Sessions

2:00 - 3:00 pm: Clinical Hot Topics Session B



Bev Johnson, MD



Madeline Teisberg, MD



Ann Contrucci, MD



Janice Werbinski, MD



Mary Rorro, DO



Martha Sommers, MD

- **The Crisis in Primary Care in Canada: What Comes Into Focus through a Gender Lens**
Bev Johnson, MD
Community Family Physician, Nepean Family Health Organization
- **Understanding Mental Health with the Mexican Military; How the Students Became the Teacher**
Madeline Teisberg, MD
Lt. Commander, Medical Corps; U.S. Navy Assistant Professor, Dept of Psychiatry
- **Constipation in Women: The Many Faces**
Cuckoo Choudhary, MD
Assoc. Professor of Medicine, Division of Gastroenterology & Hepatology, Dept. of Medicine, Thomas Jefferson University
- **Understanding and Addressing Sexual Harassment in Academic Medicine**
Diana Lautenberger, MA
Director, Gender Equity Initiatives, AAMC
- **Eating Disorders for the Primary Care Physician: Not a Disease "You Choose"**
Ann Contrucci, MD
Assist. Professor Peds/Clinical Medicine Philadelphia Coll. of Osteopathic Medicine



Cuckoo Choudhary, MD



Diana Lautenberger, MA



Deborah Gomez Kwolek, MD

3:00 - 3:30 pm - Break, Exhibits, Posters*

3:30 - 4:30 pm - Workshops

Mobilizing AMWA Students for Innovation in Medical Education: the National Sex and Gender Student Education Initiative

Deborah Gomez Kwolek, MD
Assistant Professor of Medicine
Harvard Medical School

Connie Newman, MD
Adjunct Professor of Medicine, NYU SOM
Past President AMWA
Vice President MWIA North America Region

Janice Werbinski, MD
Assoc. Clinical Professor Emerita of OBGyn
Western Michigan Univ. Homer, MD SOM

Sneha Chaturvedi
Medical Student Chair
Sex & Gender Health Collaborative

Music, Art, and Medicine - Bridging the Connections for Better Health

Mary Rorro, DO
Chair, Music and Medicine Committee, AMWA
Co-Chair Humanities Committee, AMWA
Psychiatrist, Department of Veterans Affairs

Martha Sommers, MD
Assistant Professor and Head, Division of Global Health, Department of Family and Community Medicine, Marshall University

Olapeju Simoyan, MD, MPH, BDS
Professor of Psychiatry
Drexel University College of Medicine

Lisa Wong, MD
Assistant Professor of Pediatrics and Associate Co-Director, Arts and Humanities Initiative
Harvard Medical School



Connie Newman, MD



Olapeju Simoyan, MD, MPH, BDS

4:30 - 5:30 pm - Graduate Medical Education (GME) Symposium

ACGME Updates

Elizabeth Ames, MD
Professor and Program Director, Dept. of Orthopaedics & Rehabilitation
University of Vermont Larner College of Medicine

Exploring Beads of Privilege

Ana Maria Lopez, MD
Vice Chair, Medical Oncology, Chief of Cancer Services, Jefferson Health New Jersey
Sidney Kimmel Cancer Center, NCI Designated



Elizabeth Ames, MD



Ana Maria Lopez, MD



Lisa Wong, MD



Sneha Chaturvedi

amwa-doc.org/amwa108



108th Annual Meeting MWIA North American Congress

FRIDAY, MARCH 24

All times ET
*Non-CME Sessions



Andrea McMillin, MD



Joan C. Lo, MD



Kim Templeton, MD



Vivien Brown, MD



Sherry Lai, MD



Vidhya Prakash, MD

4:30 - 5:30 pm - Graduate Medical Education (GME) Symposium *(continued)*

A Culinary Medicine Toolkit for Physicians in Training

Sherry Zhang, MD

Internal Medicine Resident, Kaiser Permanente Oakland

Promoting Equitable Care for Patients with Disabilities and Medical Complexity

Alexandra Schoenberger, MD, MEd

Internal Medicine-Pediatrics Resident

University of Cincinnati Medical Center/Cincinnati Children's Hospital Medical Center

Using Film to Address Implicit Bias in Medical Culture

Joan C. Lo, MD

Research Scientist Kaiser Permanente Division of Research

Assistant Program Director, Kaiser Permanente Oakland Medical Center

COERG - Encouraging Collaboration Amongst Leaders in Orthopaedic Education

Tyler Kelly

Research Fellow, Hughston Foundation, Columbus, Georgia

Medical Student, University of South Carolina School of Medicine-Greenville

Resident Wellbeing: Supporting Women Residents as Physicians and Caregivers

Andrea McMillin, MD

Director of Accreditation and CLER GME Officer of Wellness, University Kansas School of Medicine

Resident Wellbeing and Red Flags

Kim Templeton, MD

Orthopaedic Residency Program Director, University of Kansas Medical Center; AMWA Past-President

4:30 - 5:30 pm - Workshops

Women Leaders: One World, One War Against COVID

Vivien Brown, MD

Assistant Professor, Department of Family & Community Medicine, University of Toronto

Sherry Lai, MD

Professor, Chang Gung Memorial Hospital and Chang Gung University

Vidhya Prakash, MD

Professor and Chief Medical Officer

Southern Illinois University School of Medicine

Healing and Humanities: An Arts in Medicine Journal

Premalatha Amalraj, MD

Federal Regulatory Affairs Coordinator
Swedish Health Services

Mary Rorro, DO

Chair, Music and Medicine Committee, AMWA

Co-Chair Humanities Committee, AMWA

Psychiatrist, Department of Veterans Affairs

Roberta Gebhard, DO

Past-President, AMWA

Co-Founder, Gender Equity Task Force

Padmini Murthy, MD, MPH, MS

Professor/ Global Health Director NYMCSHSP

Focal Point SDG 3 HUB United Nations

Academic Impact; AMWA Global Health Lead &

NGO Representative to United Nations

Gloria Bachmann, MD, MMS

Associate Dean for Women's Health and

Professor, Obstetrics and Gynecology

Rutgers Robert Wood Johnson Medical School

Caitlin Cavarocchi, MM

Student, UPenn Post Baccalaureate Program

Student Chair, Music & Medicine Committee

5:30 - 6:30 pm - Specialty / Residency Fair*

7:00 - 9:00 pm - Women in Medicine Reception & Mutter Museum*



Sherry Zhang, MD



Alexandra Schoenberger, MD



Tyler Kelly



Roberta Gebhard, DO



**Padmini Murthy, MD,
MPH, MS**



Premalatha Amalraj, MD



Gloria Bachmann, MD, MMS



Mary Rorro, DO



Caitlin Cavarocchi, MM

amwa-doc.org/amwa108



108th Annual Meeting MWIA North American Congress

SATURDAY, MARCH 25

All times ET
*Non-CME Sessions



Caitlin Bernard, MD, MSci

8:00 - 9:00 am - Poster Sessions*

Advocacy

9:00 am - Keynote Address: Advocating for Reproductive Justice in a Post-Roe World

Caitlin Bernard, MD, MSci

Assistant Clinical Professor of OBGYN, Indiana University School of Medicine

9:30 - 9:50 am - Climate Solutions Are Health Solutions

Mona Sarfaty, MD, MPH

Founder and Board Member, Medical Society Consortium on Climate and Health, Center for Climate Change Communication, George Mason University

9:50 - 10:10 am - This is Our Lane: Role of Physicians in Gun Violence Solutions

Ruth Abaya, MD, MPH

Injury Prevention Program Manager, Philadelphia Department of Public Health
Attending Physician, Children's Hospital of Philadelphia Division of Emergency Medicine
Associate Professor of Clinical Pediatrics, University of Pennsylvania
Practice-based Scholar, CHOP Ctr for Violence Prevention, Senior Scholar, Penn Injury Science Center

10:10 - 10:30 am - Finding Your Worth: Women Physicians in the Workplace

Kim Templeton, MD

Professor and Vice-Chair for Diversity, Equity, & Inclusion, Department of Orthopaedic Surgery
Associate Dean for CME, University of Kansas Medical Center; AMWA Past President

10:30 - 11:10 am - Table Talk & Discussion: Advocacy in Action

11:10 - 11:40 am - AMWA Awards Ceremony*

Susan T. Hingle, MD

Professor of Medicine, Associate Dean for Human & Organizational Potential Director of Faculty Development, Southern Illinois University School of Medicine, AMWA Awards Chair

11:40 am - 1:00 pm - Lunch, Exhibits, Posters*

1:00 - 1:55 pm - AMWA Healthcare Innovation Challenge*

Dima Elissa, MBA

VisMed-3D, CEO & Founder
AMWA Chair, Healthcare Innovation Challenge

Grace Lin, MD, MBA

CEO, HeartScreen Health

Eun Jung Choi, MD, PhD, MBA
CEO, Spave Science

Paula Doyle, MD, FPMRS
CEO & Founder, EndoGlow

Ruchi Gupta MD, MPH
Founder, Yobee Care

Maggie Koos, MD, MS
Founder, Koos Medical Innovations



Mona Sarfaty, MD



Kim Templeton, MD



Dima Elissa, MBA



Grace Lin, MD, MBA



Paula Doyle, MD, FPMRS



Ruth Abaya, MD



Susan Hingle, MD



Eun Jung Choi, MD,
PhD, MBA



Ruchi Gupta, MD, MPH



Maggie Koos, MD, MS

amwa-doc.org/amwa108



108th Annual Meeting MWIA North American Congress

SATURDAY, MARCH 25

All times ET
*Non-CME Sessions



Marion McCrary, MD

1:00 - 1:55 pm - Workshops

Stories Heal and Reveal: A Radical Listening and Reflective Writing Workshop

Marion McCrary, MD

Clinical Associate, Duke Department of Medicine, Associate Director, Duke GME Coaching Advocate Health Care, Governor-Elect, North Carolina Chapter American College of Physicians

Riddi Shah, MD

Locums/Per Diem Hospitalist

Fariha Shafi, MD

Associate Professor of Medicine
University of Missouri Kansas City



Riddi Shah, MD



Haneme Idrizi, MD

Wellness and Equity Are Key Pillars for Successful Leadership: Lessons Learned in the WEL Program

Haneme Idrizi, MD

Associate Dean for Student Affairs & Admissions, Assoc. Professor of Pediatrics, SIU School of Medicine

Katherine Sharkey, MD, PhD

Assoc. Professor of Medicine, Assoc. Professor of Psychiatry & Human Behavior; Assoc. Dean for Gender Equity Alpert Medical School of Brown University



Fariha Shafi, MD



Heather L. Lander, MD

Witzard Seide, MD

Clinical Associate Professor of Pediatrics
Uniformed Services University

Heather L. Lander, MD

Assist. Professor, Anesthesiology & Peri-operative Medicine, University of Rochester



Katherine Sharkey, MD, PhD

2:00 - 3:00 pm - Clinical Hot Topics

• HPV Head & Neck Cancer and Treatment Strategies

Karen Y. Choi, MD

Assist. Professor, Dept. of Otolaryngology Head & Neck Surgery, Penn State Health Hershey Medical Center, PA

• Gadolinium and Iodine Contrast: What Clinicians Need to Know When Ordering Imaging

Eleanor Chu, MD

Assoc. Professor of Radiology
University of California, Irvine

• Care for Incarcerated Women

Gloria Bachmann, MD, MMS

Assoc. Dean for Women's Health
Professor of Ob/Gyn, Rutgers Robert Wood Johnson Medical School

• Stop the Leak! Management of Female Urinary Incontinence

Ramzy Burns, MD

Chief Urology Resident at Indiana University Health

• Neurosurgical Emergencies

Lydia Kaoutzani, MD

Neurosurgery Resident, Medical College of Georgia at Augusta University



Karen Y. Choi, MD



Witzard Seide, MD

2:00 - 3:00 pm - Workshops

Making Private Practice Approachable

Segen Chase, MD

CenterPointe Physicians, Co-Owner
Clinical Assistant Professor, University of Kansas School of Medicine, Wichita



Gloria Bachmann, MD, MMS



Eleanor Chu, MD



Ramzy Burns, MD



Lydia Kaoutzani, MD



Segen Chase, MD

amwa-doc.org/amwa108



108th Annual Meeting MWIA North American Congress

SATURDAY, MARCH 25

All times ET
*Non-CME Sessions



Susan Hingle, MD



Eileen Barrett, MD, MPH



Aurelie Athan, PhD



Laura Helfman, MD



Elana Cohn, MD



Caitlin Weber, MD

2:00 - 3:00 pm - Workshops (continued)

Big Enough to Matter, Small Enough to Win: Removing Barriers to Physicians and Students Receiving Mental Health Care

Susan T. Hingle, MD

Professor of Medicine, Associate Dean for Human & Organizational Potential
Director of Faculty Development, Southern Illinois University School of Medicine

Eileen Barrett, MD, MPH

Chair-elect, Board of Regents, American College of Physicians (ACP)
Internal Medicine Hospitalist

3:00 - 3:15 pm - AMWA Healthcare Innovation Award*

3:00 - 3:30 pm - Break*

3:30 - 4:30 pm - Workshops

Transforming Medicine Through Performing Arts: A Review of Current Programming and Future Directions

Shilpa Darivemula, MD, MS

Clinical Instructor, Department of OBGYN
University of North Carolina
Director of the Aseemkala Initiative

Shreya Srivastava

Medical Student, Albany Medical College
MBA Graduate, Clarkson University
Aseemkala Initiative Fellow

Bringing Healthcare, Education, and Hope to Meghauli, Nepal

Laura Helfman, MD

Attending Emergency Physician, Niswonger Pediatric Hospital, Johnson City Medical Center

AMWA Fertility Committee: Reproductive Life Plan or Fertility

Aurelie Athan, PhD

Associate Research Professor, Clinical Psychology, Teachers College, Columbia University

Torie Comeaux Plowden, MD, MPH

Director, Reproductive Endocrinology and Infertility Division; Deputy Chief, Gynecologic Surgery and Obstetrics Department, Walter Reed National Military Medical Center

4:30 - 5:30 pm - Workshops

Factors Affecting Access to Fertility Care and how to Provide Equity in Fertility Care

G. David Adamson, MD, FRCSC, FACOG, FACS

Founder & CEO, ARC Fertility
Clinical Professor, Stanford University School of Medicine
Associate Clinical Professor, University of San Francisco School of Medicine
Past President, American Society for Reproductive Medicine (ASRM)

Medication Abortion 101

Elana Cohn, MD

Family Medicine Physician, NYC

Caitlin Weber, MD

Family Medicine Physician, NYC

Claudia Conlon Morrissey, MD, MPH

Senior Associate, Department of
International Health, John Hopkins
Bloomberg School of Public Health

The Gender of the Sender: Assessing Gender Biases of Greetings in Patient Portal Messages

Allison Couture, DO, MPA

Assistant Professor, Department of Family Medicine and Community Health
University of Wisconsin School of Medicine and Public Health



Shilpa Darivemula, MD, MS



Shreya Srivastava



Torie Comeaux Plowden,
MD, MPH



G. David Adamson, MD



Claudia Conlon Morrissey
MD, MPH



Allison Couture, DO, MPA

amwa-doc.org/amwa108



108th Annual Meeting MWIA North American Congress

SATURDAY GALA, MARCH 25

All times ET
*Non-CME Sessions



Janine Austin Clayton, MD



Sydelle Ross, MD



Cait Cavaocchi, MM



Deborah Gomez Kwolek, MD



Sami Ali, MD

6:45-7 pm - Pre-Gala Musical Performances

7:00 pm - Welcome & "Physician, Healers" Anthem
(Music & Lyrics by Dr. Mary Rorro)

7:15-7:35 pm - Keynote
Janine Austin Clayton, MD
Associate Director for Research on Women's Health
Director, Office of Research on Women's Health
National Institutes of Health

7:35-7:50 pm - Musical Performances

Sydelle Ross, MD - Vocals
Olapeju Simoyan, MD, MPH - Ukelele
Cait Cavaocchi, MM - Vocals
Angela Choi - Violin
Mary Rorro, DO - Viola

8:00-8:15 pm - Fellowship Ceremony, Artists in Residence, White Rose Ceremony

Fellows
Deborah Kwolek, MD
Olapeju Simoyan, MD, MPH

Artists in Residence
Sami Ali, MD
Leana Pande

8:15-8:30 pm - Presidential Transition

8:30-8:45 pm - Presidential Inauguration Speech
Elizabeth Garner, MD, MPH
AMWA President 2023-2024

9:30 pm- Dancing



Mary Rorro, DO



Angela Choi



Olapeju Simoyan, MD, MPH



Leana Pande



Elizabeth Garner, MD, MPH



108th Annual Meeting MWIA North American Congress

SUNDAY, MARCH 26

All times ET
*Non-CME Sessions

9:00 am - 10:00 am - Workshops



Bev Johnson, MD

Ending Gender-Based Violence and Sexual Harassment: Medical Women's International Association Advocacy Workshop (Continued)

Bev Johnson, MD, CFFP
Community Family Physician
Nepean Family Health Organization

Anne Niec, MD
Professor of Pediatrics, McMaster University

Connie Newman, MD
Adjunct Professor of Medicine, New York University School of Medicine, New York
Past President, AMWA; Vice President of North America, MWIA

Karen Poirier-Brode, MD
MWIA National Coordinator, AMWA
Co-Chair, Studio AMWA

Shelley Ross, MD
Family physician, Vancouver BC Canada

Clarissa Fabre, MBBS (Hons), DCH (London), MRCP
Past President Medical Women's Federation UK
Past President Medical Women's International Association (MWIA)
Past MWIA representative to WHO

The Neurobiological Cost of Caring and Strategies to Get out of Debt

Jillian Bybee, MD
Assistant Professor of Pediatrics and Human Development, Michigan State University
Associate Program Director of Wellbeing and Professional Development
Corewell Health Pediatrics Residency Program

Aarti Kamat, MD
Pediatric Hematology/Oncology Fellow, University of Michigan, C.S. Mott Children's Hospital

10:00 - 11:00 am - Workshops

Gaslighting or Imposter Syndrome? How to Tell, What to Do: A Workshop for Women in Medicine

Diane Shannon, MD
Physician Coach, Author, Change Agent

Unshaming Women Physicians: Connect to Your Ultimate Power, Intelligence, and Beauty by Releasing Shame

Parastoo Jangouk, MD
Attending Physician, Austin Gastroenterology
Trauma-informed Coach

Military Reproductive Health

Paulette Cazares, MD, MPH
Director for Mental Health, U.S. Naval Hospital, Okinawa, Japan



Paulette Cazares, MD, MPH



Anne Niec



Connie Newman, MD



Karen Poirier-Brode, MD



Jillian Bybee, MD



Diane Shannon, MD



Shelley Ross, MD



Clarissa Fabre, MBBS, DCH, MRCP



Aarti Kamat, MD



Parastoo Jangouk, MD

amwa-doc.org/amwa108



SUNDAY STUDENT PROGRAMING

All times ET
*Non-CME Sessions



Kate Stampler, DO



Nicole Bentze, DO



Ramzy Burns, MD

8:00 - 8:20 am - Introduction, Awards & New Student Electees*

8:20 - 8:50 am - Mentorship & Mingling*

8:50 - 8:55 am - ScholarRx Commercial & Raffle Break*

8:55 - 9:15 am - AMWA Physicians Against the Trafficking of Humans (PATH)*

9:15 - 9:20 am - Pixorize Commercial & Raffle Break*

9:20 - 10:00 am - Workshops*

- **Knot Tying Clinic**
Kate Stampler, DO
Assistant Program Director for the OB/GYN residency at Einstein Medical Center Philadelphia; Division Chair of Gynecology; Section Chief of Minimally Invasive Gynecologic Surgery
- **SHINE Like A STAR: Mastering Behavioral & Situational Interview Questions**
Nicole Bentze, DO
Family Physician and Dean of the Sarasota Regional Medical Campus of the Florida State University, College of Medicine
- **Sexual Assault: Caring for Ourselves and Our Patients (Student Presentation)**
Stephanie Moss
MS3, Rush Medical College, Chicago, Illinois
- **Women in Urology**
Ramzy Burns, MD
Resident Physician at Indiana University School of Medicine, Indianapolis, Indiana

10:00 - 10:15 am - Jaanuu Scrub Giveaway*

10:15 - 11:00 am - How Abortion Bans Affect Education of Physicians and Students*

Caitlin Bernard, MD, MS
Assistant Professor of Clinical Obstetrics & Gynecology
Indiana University School of Medicine

11:00 - 12:30 pm - Premedical Fair*



Stephanie Moss



Amoolya Vayalapalli



Caitlin Bernard, MD, MS

AMWA Annual Meeting: Thriving, Leading, Transforming March 23-26, 2023

Accreditation Statement



In support of improving patient care, Indiana University School of Medicine is jointly accredited by the Accreditation Council for Continuing Medical Education (ACCME), the Accreditation Council for Pharmacy Education (ACPE), and the American Nurses Credentialing Center (ANCC), to provide continuing education for the healthcare team.

Physicians

Indiana University School of Medicine designates this live activity for a maximum of 19 *AMA PRA Category 1 Credits™*. Physicians should claim only the credit commensurate with the extent of their participation in the activity.

Commercial Support:
This activity is supported by an educational grant from Merck



SCHOOL OF MEDICINE
INDIANA UNIVERSITY

Disclosure Summary

Indiana University School of Medicine (IUSM) adheres to the ACCME's Standards for Integrity and Independence in Accredited Continuing Education. Any individuals in a position to control the content of a CE activity, including faculty, planners, reviewers or others are required to disclose all financial relationships with ineligible entities (commercial interests).

All relevant conflicts of interest have been mitigated prior to the commencement of the activity.

There are no relevant financial relationship(s) with ineligible companies* for anyone who was in control of the content of this activity except for:

- **David Adamson** has disclosed Executive-Advanced Reproductive Care, Inc. | Consulting Fee-Labcorp | Consulting Fee-Cooper (Relationship has ended)
- **Parastoo Jangouk** has disclosed Consulting Fee-Eli Lilly and Company

* An **ineligible company** is any entity whose primary business is producing, marketing, selling, re-selling, or distributing healthcare products used by or on patients.



SCHOOL OF MEDICINE
INDIANA UNIVERSITY

American Medical Women's Association 2023 AWARDS



Presidential Award – Janine Clayton, MD, FARVO

Janine Austin Clayton, M.D., FARVO, was appointed Associate Director for Research on Women's Health and Director of the Office of Research on Women's Health at the NIH in 2012. Dr. Clayton has strengthened NIH support for research on disease, disorders, and conditions that affect women. She is the architect of the NIH policy requiring scientists to consider sex as a biological variable across the research spectrum, a part of NIH's initiative to enhance reproducibility, rigor, and transparency. As co-chair of the NIH Working Group on Women in Biomedical Careers with the NIH Director, Dr. Clayton also leads NIH's efforts to advance women in science careers. In 2021, Dr. Clayton was elected to the Board of Directors for the American Association for the Advancement of Science (AAAS). Dr. Clayton received her undergraduate degree with honors from Johns Hopkins University and her medical degree from Howard University College of Medicine.



Elizabeth Blackwell Award – Nancy D. Spector, MD

Nancy Spector, MD, is a Professor of Pediatrics and serves at Drexel University College of Medicine (DUCOM) as Executive Director of the Hedwig van Ameringen Executive Leadership in Academic Medicine® (ELAM) program, a year-long, national leadership fellowship program for women in academic medicine, dentistry, public health, and pharmacy and as Executive Director of the Executive Leadership in Health Care (ELH) program for women leaders in health care systems. She also serves as Senior Vice Dean for Faculty, the Betty A. Cohen Chair in Women's Health, Executive Director of the Lynn Yeakel Institute for Women's Health and Leadership (IWHL), Chair of the I-PASS Study Group, and founder of the I-PASS Patient Safety Institute. Dr. Spector is a national leader in gender equity in academic medicine. Her contributions to academic medicine and graduate medical education are in mentoring and sponsorship, leadership skills development, professional development, patient safety and curriculum development and implementation.



Bertha Van Hoosen Award – Nicole P. Sandhu, MD, PhD, FACP, FAMWA

Nicole P. Sandhu, MD, PhD, FACP, FAMWA is an Associate Professor of Medicine at Mayo Clinic in Rochester, MN where she practices Internal Medicine and specializes in breast health and diseases including breast cancer and the care of patients at increased risk of breast cancer. She has previously served as the Women's Health and General Internal Medicine Fellowship Director at Mayo. Her academic interests include the cardiovascular effects of breast cancer therapy. Dr. Sandhu was the 2020-2021 AMWA President, and currently serves as the Chair of the AMWA Governance Committee, Co-Chair of the AMWA Leadership Council, and is the founding Chair of the AMWA Antiracism Committee. She has previously served on the AMWA Board of Directors and as Chair of the Membership Committee and Co-Chair of the AMWA Breast Cancer Task Force. She is the very proud mom of two amazing daughters who are also AMWA members.



Lila Wallis Women's Health Award – Sandra Milligan, MD, JD

Sandy Milligan, MD, is the Head of Research and Development (R&D) at Organon. In her role, Sandy is responsible for all phases of pre-clinical and clinical development, global regulatory affairs, medical affairs and safety. Sandy partners closely with Corporate Business Development to identify and bring into the pipeline assets for collaboration, licensing or acquisition. Sandy serves as one of the key corporate spokespeople for Organon, in advocating for innovation, information, choice and access in Women's Health. Sandy is a graduate of George Washington University School of Medicine, and Georgetown University Law Center, and proudly served as a General Medical Officer in the U.S. Army, during the first Gulf War. Prior to entering industry, Sandy practiced general medicine in Virginia and California. She practiced business and healthcare law in California, which served as her launchpad into industry.



Woman in Science Award – Betty S. Pace, MD

Dr. Betty Pace is a Professor of Pediatrics and Francis J. Tedesco Distinguished Chair of Pediatric Hematology/Oncology at Augusta University. Dr. Pace received her MD degree from the Medical College of Wisconsin in 1981 and trained in Pediatric Hematology/Oncology at the University of Colorado Health Sciences Center. In 2010, Dr. Pace joined the faculty at Augusta University where she leads a NIH-funded basic/translational research laboratory, focused on the drug discovery for treatment of sickle cell disease. She served as Director of the Pediatric Sickle Cell Program until 2021, providing medical services for 600 children. In addition, Dr. Pace has personally trained over 100 young scientists, and she directs a NHLBI-funded training opportunity, Program to Increase Diversity for Individuals Engaged in Health-Related Research (PRIDE). Over 112 junior faculty members from 50 institutions have completed the PRIDE program to expand diversity of the US biomedical science workforce.



Early Career Woman in Science Award – CS Tse, MD

Chung Sang Tse, MD, is a board-certified Gastroenterologist and Assistant Professor of Clinical Medicine at the University of Pennsylvania. Dr. Tse is an academic clinician-scientist with a clinical focus on inflammatory bowel diseases, specifically Crohn's disease and ulcerative colitis. Her research is focused on addressing the non-inflammatory drivers of disease burden in inflammatory bowel diseases, including areas intersecting with healthcare delivery, healthcare utilization, health disparities, interdisciplinary care, and psychosocial health. Dr. Tse obtained her medical degree from the Yale School of Medicine and thereafter completed her residency in internal medicine at the Mayo Clinic, fellowships in gastroenterology and women's gastroenterological health at the Warren Alpert Medical School of Brown University, and Advanced Inflammatory Bowel Diseases Preceptorship at the University of California, San Diego.



Esther Pohl Lovejoy Award – Satty Gill Keswani, MD

Dr. Satty Keswani arrived in the USA from New Delhi, India, in the late 1950s to find that no surgical residencies were available and that women were not welcome in the field. Instead, she chose obstetrics and gynecology as a specialty and after delivering over 1000 babies became intrigued by the problem of women who were unable to conceive. By 1967, she had found her life's work and had established a practice specializing in treating infertility. In private practice in Livingston, NJ for over 55 years, Dr. Keswani has successfully treated hundreds of couples for infertility while developing new methods to treat the problem. A strong advocate for women in medicine, Dr. Keswani has served as a non-governmental organization delegate to the United Nations; previously she represented MWIA and currently represents AMWA as NGO representative to the United Nations. She has been the recipient of several national and international awards.



Larry Zaroff Man of Good Conscience Award – David L. Coleman, MD

David Coleman is an ID specialist and physician scientist with 33 years of experience leading academic divisions and departments in three different academic health systems and medical schools. He most recently served for 16 years as the Chair of Medicine at BU School of Medicine and Boston Medical Center. He has served on non-profit boards in several professional organizations and has developed leadership programs for faculty, as well as served as a mentor and sponsor for academic and health system leaders. He has had particularly meaningful experiences working with individuals of diverse backgrounds and lived experiences. Dr. Coleman's scholarship has focused on basic immunology and interdisciplinary approaches to developing research, clinical, and educational programs. He has received multiple teaching awards, the

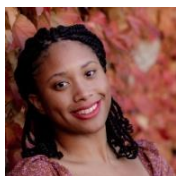
Humanitarian Award from Catholic Charities of Connecticut, and the Robert Williams Distinguished Chair of Medicine Award from the Association of Professors of Medicine.



Larry Zaroff Man of Good Conscience Award – Ted Johnson, MD, MPH

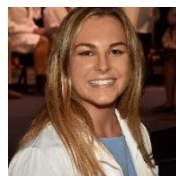
Ted Johnson, MD, MPH graduated from the Northwestern Feinberg School of Medicine and the UNC Gillings School of Global Public Health. At Emory University, he is Chair of the Family and Preventive Medicine department, and the Paul W. Seavey Chief of the General Internal Medicine division. Ted holds academic appointments in Family Medicine, Internal Medicine, Nursing, Epidemiology, and Urology. Ted directs Georgia Gear, a HRSA funded Geriatric Workforce Enhancement Program, that works to help aging Georgians live their best lives. He serves Veterans as a VA Staff Physician and GRECC Investigator in Atlanta to help Veterans address bladder dysfunction. At Emory, he works as a supporting physician for the nurse practitioner-led Integrated Memory Care program providing primary care to patients living with

dementia.



Camille Mermod Award – Katherine Jeffreys, BA

Katharine Jeffreys was born and raised in St. Louis, Missouri. She graduated from UChicago in 2019. After college, she found her passion for addressing health disparities as a Research Assistant on a study examining the effects of stress on pregnancy outcomes in low-income African-American women. After seeing the importance of representation in medicine, she decided to pursue her passion for reducing health disparities as a physician. In 2021, she graduated from the UPenn Pre-Health Specialized Studies Program. She currently serves as the Assistant Director of the American Medical Women's Association. Personally affected by the issues of gun violence and domestic violence, Katharine advocates for policies and practices that reduce violence. She serves as the Administrative Director of AMWA's Gun Violence Solutions Committee and Co-Chair of AMWA's Domestic Violence Prevention Committee. Katharine is also the co-creator of the podcast, Unloading: Community Solutions for Gun Violence.



Anne C. Carter Student Leadership Award – Michaela Juels

Michaela Juels was born in Orange, California, and is a graduate of UC San Diego. As a recipient of the Geffen Scholarship, she is completing her medical training at the David Geffen School of Medicine at UCLA. Here, she is actively involved in leadership, research, and the advancement of women. Michaela is a member of the student council as a well-being representative increasing mental health care for her peers. In research, Michaela is leading a novel study examining the impact of health literacy on treatment outcomes for pediatric orthopaedic cerebral palsy patients. As President of AMWA at DGSOM, she spearheaded the first ever "Mini-Medical School" for local under-served high school women in September 2022. In this interactive retreat, thirty-five high school women rotated through medical workshops, designed a health-based project, discussed social determinants of health with a physician panel, and discussed the obstacles and strengths of women in medicine.



Point of Light Volunteer Service Award – Mary Rorro, DO

Dr. Mary Rorro is a Harvard trained psychiatrist and completed her Addictions Psychiatry fellowship at Massachusetts General Hospital. She is a musician, songwriter and poet and has composed Anthems for international organizations, including the Medical Women's International Association (MWIA) Centennial theme song. As Chair of AMWA's Music and Medicine and Co-Chair of AMWA Medical Humanities committees, she has spearheaded a variety of music videos honoring healthcare providers and providing public health messages and co-edited *Humanities and Healing: An Arts in Medicine Journal*.

Exceptional Mentor Award Recipients

Leslie Coker Appiah, MD
Englewood, CO

Arlene E. Chung, MHA, MMCi, FAMIA
Durham, NC

Shermeeka Hogans-Mathews, MD
Tallahassee, FL

Melissa A. Hullinger, MD
Bloomington, IN

Gretchen Purcell Jackson, MD, PhD, FACS, FACMI, FAMIA
Kingston Springs, TN

Amanda L. Scott, DO
Philadelphia, PA

Judy Tung, MD
New York, NY

Institution and Association Awards

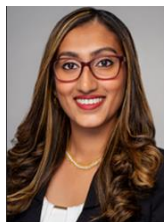


Association Partner Award - American College of Physicians



Institution Partner Award – Northwell Health

Resident Division Awards



Charlotte Edwards Maguire, MD Outstanding Resident Mentor Award – Crystal Ashlyn Joseph, MD

Crystal Joseph is a PGY-1 Transitional Year resident who will be doing her anesthesiology residency at Beth Israel Deaconess Medical Center in Boston. She is a graduate of Drexel University (BS degree) and Drexel University College of Medicine (MD degree) and is currently doing her transitional year at St. Luke's University Health Network. When she isn't studying or working, Crystal loves dancing and choreographs dance pieces. She is passionate about mentorship and DEI, currently serving as a diversity and equity committee resident representative for the Women in Anesthesiology-Medical Student Component.

According to recent literature, the anesthesiology workforce is currently about 25% female, and within anesthesiology residency programs, only 33% of residents are women. These percentages have not changed significantly since 2006. With this in mind, Crystal focuses on mentorship to invest in the future of anesthesiology for women.



Susan L. Ivey, MD Courage to Lead Award – Thulasee Jose, MD

Thulasee (Tulsi) Jose, MD, is an Internal Medicine resident at Baptist Hospitals of Southeast Texas (Beaumont, TX) and research faculty at Mayo Clinic Rochester. She is president of the American Society of Clinical Oncology (ASCO) student interest group in the residency program and was recipient of the 2021-22 Baptist Hospitals of Southeast Texas Resident Research Award. Prior to residency, she completed a post-doctoral research fellowship at Mayo Clinic where she received the Yale University-Mayo Clinic Center of Excellence in Regulatory Science and Innovation (CERSI) Award and served as the Mayo chapter representative for the Women in Engineering and Science Research (WISER) Group. Dr. Jose is active

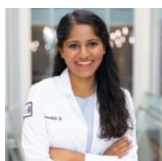
in various AMWA initiatives and mentors other residents on quality improvement research. She is twice a recipient of ACP's Young Achiever Merit Award (2021, 2022). She plans to pursue Hematology-Oncology and promote grassroots advocacy focused on leadership for women.

**Susan Love Writing Contest – Krystal Mills, MD**

Dr. Krystal Mills has explored scientific writing through scholarly activities but has loved creative writing as well as the creative and performing arts since a young age. Her clinical and research interests include health disparities and gastrointestinal metaplasia. She will begin her fellowship in gastroenterology and hepatology at Mayo Clinic in Rochester, Minnesota after completing this year as chief resident at Morehouse School of Medicine. Dr. Mills is grateful for the opportunity to share her passion through the Susan Love Writing Competition

Medical Student Division Awards**Haffizulla Family Scholarship and Education Scholarship and Medical Education Cycle 1 Scholarship – Nazineen Kandahari**

Nazineen Kandahari is an Afghan refugee and fourth-year medical student at the UC Berkeley-UCSF Joint Medical Program and UCSF Program in Medical Education for the Urban Underserved (PRIME-US). A graduate of UC Berkeley (Molecular & Cell Biology/Public Health, Honors and Master of Science in Health & Medical Science), her research centers on public health, community service on health/educational equity, community engagement, and immigrant health, from bench to bedside at UC Berkeley, UCSF, Kaiser Permanente, Highland Hospital, and Dillin Lab (Howard Hughes Medical Institute). She received Human Rights Center and Albert Schweitzer Fellowships for a novel project to promote health and healthcare access among Afghan refugees. Nazineen is the founding director of Afghan Clinic, a public health initiative for forcibly displaced Afghan immigrants. She has been an invited Grand Rounds and NPR podcast speaker and is an aspiring academic otolaryngologist.

**Linda Brodsky MD Essay Award – Anagha Lokhande**

Anagha Lokhande is a second-year medical student at the Warren Alpert Medical School of Brown University. Since earning her Bachelor of Arts in Economics from Brown University, she has served as an intern for the health policy team of the United States Senate Committee on Health, Education, Labor, and Pensions and as a member of the student leadership board of Clínica Esperanza, a free clinic in Providence, Rhode Island. Her research interests include health economics and artificial intelligence for ophthalmology. She is currently engaged in work on health policy recommendations for peritoneal dialysis reimbursement and on applications of deep learning to optical coherence tomography and visual field testing. In her free time, Anagha enjoys reading contemporary literature and rollerblading.

**Underrepresented Students in Medicine Award – Raquel Valdes**

Raquel Valdes is a third-year medical student at the Medical College of Wisconsin Milwaukee campus. She was born in Torreon, Coahuila, Mexico and graduated from Pomona College with a major in Neuroscience and a minor in Latin-American studies. After graduating, she spent two years doing research in kidney tubular transport in Mexico City. During her time at MCW she has been part of multiple organizations and has had diverse leadership roles in community engagement including Vulnerable Populations Chair for the American Medical Women's Association and Community Outreach Chair for the Latino Medical Student Association (LMSA). Currently, she serves as Fundraising and Scholarship Chair of the LMSA Midwest Region. She is passionate about working with communities of color and addressing health disparities, especially in regard to maternal mortality and women's health.

**Underrepresented Students in Medicine Award – Anamaria Ancheta**

Anamaria Ancheta is a first-year medical student at Burrell College of Osteopathic Medicine in Las Cruces, New Mexico. She received her Bachelor of Science in Biochemistry and Cell Biology from UC San Diego in 2021 and is passionate about increasing educational and mentorship opportunities for other Latinas through her involvement as a college mentor for MANA de San Diego and outreach committee member in the Association of Women in Science and Technology (AWIS) in San Diego. As the daughter of two farmer workers turned military veterans, she is dedicated to increasing access to healthcare services to those in rural and underserved communities as a future physician. In her free time, Anamaria enjoys capturing memories as a photographer.

**Eliza Lo Chin, MD, MPH Unsung Hero Award – Haley Catherine Cropper**

Haley Cropper is third-year MD/PhD student at University of Illinois College of Medicine (Chicago). She received her BS in Biopsychology Cognition Neuroscience at the University of Michigan and spent 2 years doing neuro-radiology research at Stanford University. She is working towards her PhD in the Loeb Lab studying the interplay between genetics and environment in amyotrophic lateral sclerosis (ALS) and hopes to improve the lives of people with neurological diseases. Haley is also passionate about advocating for gender equality and supporting women in medicine. As UIC AMWA President (2020-21), she helped organize events under the theme of Intersectional Feminism, and as AMWA's Gun Violence Solutions Committee Student Chair (2021-22), she advocated for equity in gun safety education and research. In her spare time, Haley loves to bake, hike, and complete crossword puzzles!

**Eliza Lo Chin, MD, MPH Unsung Hero Award – Ana Victoria Guimarães**

Ana Victoria Guimarães is a second-year medical student at the Warren Alpert Medical School at Brown University and member of the Patient Care and Population Medicine Program. She is interested in maternal-child health, palliative care, and medical education. She has received a grant to create a medical education initiative that increases students' exposure to working with birthing parents with substance use disorders from a humanistic approach, with the goal of increasing awareness and decreasing stigma amongst future clinicians. She also has a pilot study on social media as a tool for providing health information to pregnant patients and parents. She is Brown's AMWA chapter secretary and active with BrownMed by SexEd, Pathways to Medicine, and Brown Students at the Bedside. She enjoys cooking and eating, appreciating nature, and salsa dancing.

**Shobha S. Krishnan HPV and Cervical Cancer Champion Award – Elise Vance**

Elise Vance is the current Chair of GIAHC Young Leaders and the Co-Chair of the AMWA Cervical Cancer Task Force, and has been involved in these efforts since 2019. She graduated from Case Western Reserve University with her Master in Medical Physiology, and is a current medical student at the University of Louisville. She served as a speaker at the 2021 and 2022 Us vs HPV Webinars and as the moderator for a St. Jude Webinar about using social media in HPV vaccination awareness. She is passionate about working towards health equity in her advocacy efforts and hopes to continue to utilize social media outreach and the Cervical Cancer Champion program to inspire young leaders and students to be the generation to eliminate cervical cancer.

**Medical Education Cycle 1 Scholarship – Natalia Correa**

Natalia Correa is a fourth-year medical student at Florida State University College of Medicine. Prior to attending medical school, she completed Bachelor's in Exercise Physiology at Florida State University and Master in Medical Sciences at the University of South Florida. She was born and raised in Miami, Florida and both of her parents are from Bogota, Colombia. Natalia applied into general surgery and will become the first surgeon in her family. Her most cherished accomplishments are sharing her journey as a Latina medical student to inspire the next generation and support the diversification of the medical field. As a surgeon, Natalia aspires to remain involved with medical education, serve as a mentor for future surgeons, and start her own scholarship program in the future! In her free time she enjoys traveling, exploring new cuisines, spending time with loved ones, running local races, and connecting with others on social media.

**Medical Education Cycle 2 Scholarship – Sai Kurapati**

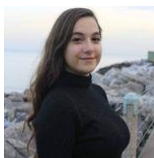
As a medical student passionate about patient advocacy, health equity and ethics, and the intersection of the arts and medicine, Sai Kurapati loves combining her many interests through community projects and research. She aspires to enter a surgical subspecialty, where she can continue pursuing these passions in her local community and globally. The overlap in AMWA's missions and Sai's interests in advancing diversity in medicine for historically underrepresented groups has inspired her to be an active member of this organization since she was a pre-medical student. As a recipient of this year's AMWA scholarship, Sai is grateful for the resources it offers and is very excited to continue working on efforts to improve diversity in medicine from both the patient and provider perspectives. In her free time, she loves to dance, tutor, and travel with her family and friends!

**Medical Education Cycle 2 Scholarship – Emily Marsico**

Emily Marsico was born and raised in Youngstown, Ohio, graduating from Youngstown State University (2020) with a B.S. in Biological Sciences (Honors Scholar Distinction, Summa Cum Laude). During this time, she worked at the Primary Care Network, a Federally Qualified Health Center. Learning about health disparities of those with lower socioeconomic status inspired her to go to medical school to address these gaps in health care. Emily attends the Northeast Ohio Medical University (NEOMED) and has continued to address health care disparities in through leadership positions at the Student Run Free Clinic at NEOMED, pursuing research, and addressing gaps in Alzheimer's research related to sex differences. She is past president of the AMWA NEOMED branch (2021-22) and current Student Division National Conference Co-chair (2022-24). She plans to stay involved in AMWA as she pursues a career in women's health and serving the underserved.

**Heller Outstanding Branch Award – AMWA Oakland University William Beaumont School of Medicine Branch**

Pre-medical Student Division Awards



Student of the Year Award – Maya Roytman

Maya is a fourth-year undergraduate student at Loyola University Chicago, where she recently finished her degree coursework in Neuroscience and Public Health. Since joining AMWA's premedical division, she has co-founded and been co-president of her university's branch, served as co-chair of the Dance, Theater, & Medicine committee, served as the premedical research chair of the Physician Fertility Initiative committee, was the national co-conference chair of the premedical division for 2021-2022, and is currently the national mentorship chair of the premedical division. AMWA has provided her an incredible community throughout her journey as a woman in medicine, and she is very humbled and grateful to receive this award.



Premedical Branch Member of the Year Award – Emma Theisen

Emma is a 2022 graduate of the University of Michigan where she was the former Membership Chair and Professional Development Chair for AMWA. She was also the Health and Wellness Chair of Circle K, a Kiwanis organization and a member of Triota, a Women's Studies honor society. During her undergraduate studies, she completed two degrees, with concentrations in Neuroscience and Gender & Health. Emma is taking two gap years before medical school, and during that time is working as a surgical tech and serving as the Maternal Health Chair for Community HealthEd, a nonprofit focused on creating and distributing reliable, evidence-based educational materials about location-specific health resources. Emma is passionate about her work as the Program Development Chair in the Lunar Doula Collective, the first and only abortion doula program in Michigan. During her free time, Emma enjoys volunteering at an equine therapy program, traveling, and tutoring elementary students.



Eliza Lo Chin Unsung Hero Award – Iulia Dobrin

Iulia is an undergraduate senior studying public policy with a minor in biochemistry at the University of Michigan. She has served on the National AMWA Pre-Medical Advocacy Committee for the 2022-2023 term. Iulia is interested in how physicians can help reduce healthcare disparities by contributing to public health, health policy, and other advocacy efforts. "I am beyond honored to receive this award, and I hope AMWA's work will inspire other physicians and future physicians to advocate for health equity."



Premedical Education Scholarship – Tyra-Lee Brett -- Tyra-Lee is an immigrant from South Africa. She is a Biomedical Sciences major at The University of South Florida. Her passion is serving the underserved. Tyra is volunteering at the Tampa VA and has an undergraduate research job, where she is currently developing clinical trials to combat the opioid epidemic. Tyra has combined her love for research and advocacy to design projects to enhance access to premedical resources for underprivileged students.



Premedical Education Scholarship – Kiara Langford – Kiara was president of the Pre-medical Branch of AMWA at UAB for 2 terms spanning the years 2020-2022. However, she has been a member of this branch since 2018, its first year on campus, and an executive board member since 2019. "As a future physician, I hope to contribute to health equity and promote diversity in healthcare."



Most Impactful Diversity and Inclusion Advocacy/Initiative – Krupa Patel – Krupa Patel is a 2022 graduate of the University of Michigan where she studied neuroscience and entrepreneurship. She also served as the President of her AMWA chapter and Pre-Surgical Club. Krupa hopes to pursue orthopedic surgery to specialize in spinal care. As an advocate for reproductive justice, she currently serves as the Executive Director of non-profit Lunar Doula Collective, the first and only pregnancy loss doula program in Michigan. In her free time, she writes for her blog, MedMap, which has accumulated over 55K readers!



Mental Health Advocacy Award – Lauren Marie Smith

I am currently a third-year undergraduate student who is majoring in Kinesiology with a Pre-Medicine minor. My ultimate goal is to gain admission into medical school after I graduate to become a Medical Doctor. It is too early to tell, but currently I am interested in orthopedics, as I have a special connection to the speciality from a personal procedure I had. My interests include fitness, health and wellness, weight lifting, human anatomy, and mental health!



MCAT Scholarship - Nede Ovbiebo – Nede is a junior at the University of Washington, pursuing degrees in Public Health-Global Health and Biochemistry. She joined AMWA in 2021 and loved the community of individuals dedicated to supporting young women on their medical education journeys. She is currently interested in the relationship between the social determinants of health and chronic disease prevalence. As a student researcher, Nede hopes to continue to understand how biosocial factors influence health outcomes in the global south.



MCAT Scholarship - Fareha Moulana Zada – Fareha is a senior majoring in Molecular and Cell Biology with a minor in Global Poverty and Practice at University of California, Berkeley and is on the pre-med track. She was born and raised in Afghanistan and immigrated to the United States about five years ago. Having lived through social determinants of health, she hopes to make healthcare more accessible for the underserved communities and is interested in promoting women's health.



MCAT Scholarship – Bismah Shaikh – Bismah is a Public Health co-chair in her AMWA chapter with research interests in the neuroendocrine factors of aggression. “I am always on the lookout for coffee shops around campus and enjoy reading non-fiction in my free time.”



AMWA Outstanding Branch Award – University of Pennsylvania AMWA

“Established in 2016, our branch is predominantly composed of post-baccalaureate, pre-health members at the University of Pennsylvania. We have a strong emphasis on philanthropic and volunteering initiatives that give back to underserved communities within Philadelphia. We are also always curating creative ways to foster community and support our peers as we take on the pre-medical journey together!”



Physician Recruitment Branch Award, Active Branch Award, & Branch Event Award - The American

Medical Women's Association Premedical at the University of Southern California – Established in the Spring of 2020, The American Medical Women's Association at the University of Southern California is committed to providing support and resources to our members to aid in their path into the healthcare field. We currently have around 100 members and host many events and programs throughout the year including shadowing rotations at the Keck Medical Center, our annual Moms in Medicine Panel, and a mentorship partnership with the Women of Radiology Leadership and Diversity (WORLD) physicians.



International Outreach Award & Humanitarian Award - AMWA at University of Puerto Rico, Rio

Piedras Campus – American Medical Women's Association at the University of Puerto Rico, Rio Piedras Campus was founded in 2021, making it the first premedical branch of AMWA in Puerto Rico. The chapter has been highly successful, boasting over 100 members and hosting various conferences featuring distinguished physicians. In addition to their academic pursuits, members of the chapter also engage in community service, partnering with organizations such as the Food Bank of Puerto Rico and Hospital del Niño. In 2021, the chapter was also honored with the AMWA Premedical International Outreach award.

Share your #AMWA2023 experiences on social media!

Make sure to tag @AMWADoctors (Twitter, IG), AMWADoc (Facebook), American Medical Women's Association (LinkedIn) on all your posts

SCIENTIFIC AND INNOVATION POSTERS

Innovation Posters

Alina Su, PhD – NovaXS
Ashlesha Patel, MD, MPH, MSHQS, IHI-IA – I'll Remember
Ashlesha Patel, MD, MPH, MSHQS, IHI-IA – RePLI
Deb Tauber, MS, RN, CHSE, CEN – Innovative SIM Solutions
Eun Jung Choi, MD, PhD, MBA – Spave Science
Grace Lin, MD MBA – Heart Screenhealth
Margaret Koos, MD – KMI – UnityPoint
Nneka Sederstrom, PhD, MPH, MA, FCCP, FCCM – UzObi (DEI - Patients)
Paula Doyle, MD, FPMRS – ENdoGlow, LLC
Ruchi Gupta, MD, MS – Yobee Care
S. Indu Rupassara, PhD, MBA – FruitVaccine, Inc
Stefanie Modri, MSN BSN C-MNN – Vasowatch

Physicians

- P1.** Cruz A, Haslam M, Baweja R, Jasani S. *"Racial and Ethnic Disparities in Postpartum Depression Screening in a Tertiary Care Clinic."*
- P2.** Rathinamanickam H, Han H, Prakash V, El-Amin W, Hingle S. *"WOMEN ON WALLS: An Analysis of Equity in the Physical Environment at an Academic Institution."*
- P3.** Templeton K. *"Awareness of sex and gender impacts on opioid use and opioid use disorder: a textual analysis of state opioid action plans in the US."*
- P4.** Gupta A & Zschaebitz. *"A Virtual Writing Accountability Dyad Enhances Productivity for Women Faculty."*
- P5.** Gupta A. *"What Are the Benefits of a Leadership Program for Women in Medicine?"*

Resident Presentations:

- R1.** Revere A & Boldue A. *"Robotic Adrenalectomy in a Patient with Neurofibromatosis Type 1 and Pheochromocytoma."*
- R2.** Khan, H. *"Inpatient Pain Management for a Patient on a Methadone Treatment Program."*
- R3.** Brown C & Faulkner H. *"Correction of Unilateral Congenital Breast Absence: A Case Report."*

Medical Student Semi-Finalist Presentations:

- M1.** Mishra A, Starr B, Li L, Kakani T, Coughlin M. *"An Underrepresented Research Population: Infants After ECMO Use in Pregnancy."*
- M2.** Thambra A, Beckman J, Farrell R, Florentin M, Muldoon J, Mesa M. *"Pleomorphic Lobular Carcinoma of the Breast: A Rare Aggressive Type of Breast Cancer."*
- M3.** McKinzie A, Wendel K, Nagra P, Colston K, Pape K. *"A Case of Congenital Syphilis: Implications of Rising Syphilis Cases on Pre- and Post-Natal Care."*
- M4.** Pauly A, Kovalan M, Richardson M, Cordell L, Miller B, Rouse C, Bernard C. *"Medically indicated Abortion in Stage 3 CKD."*
- M5.** Chaudhary A, Vandeventer L, Robinson P, Engler A, Robles M. *"Recurrent Neurovascular Symptoms during Pregnancy."*
- M6.** Taylor C, Sobering AK. *"A Homozygous Novel Pathogenic Variant in SYNJ1 Causing Epileptic Encephalopathy."*
- M7.** Arrocha D, Frank M, Kumar, C, Williams E, Emeli T, Patel N. *"A Preventable Case of Iododerma."*

- M8.** Roth E, Catanzarite A, Chura M. *"Facial Rumpel-Leede phenomenon following robotic hysterectomy in steep Trendelenburg position."*
- M9.** Duchesne G, Amellal Y, Evans W, Rohr-Kirchgraber T. *"Presentation of Guttate Psoriasis (GP in a Person of Color (POC)."*
- M10.** Spivak S, Craig H, Higgins A, Patel R, Berry R. *"Mature Cystic Teratoma Presenting s Marbles in the Ovary on Transvaginal Ultrasound."*
- M11.** Forester E. & Pellegrino T. *"Analysis of the association between incidence of amenorrhea and occurrence of stress fractures in female New Jersey Division III Collegiate Runners."*
- M12.** Watters A, Le T, Kramer N, Seeley R, Ayala J. *"The Glucagon-Like Peptide-1 (GLP-1) Receptor Agonist Liraglutide Requires Liver FGF21 to reduce Carbohydrate Intake."*
- M13.** Tomotaki A, Russo S, Graves P, Mai A, Kellaway J. *"For Her: Community Outreach Health Education."*
- M14.** Chaffin K, Harvath A, Gullet S, Christian G, McKain L. *"Pregnancy Drug Exposure Safety Studies: An Analysis of FDA Post-approval Requirements/Commitments."*
- M15.** Juels M, Mefford M, Thompson R, Yetasook A. *"The Impact of One-Day Leadership Retreat on Self-Efficacy and Interest in Medicine in High School Women."*
- M16.** Adeleye O, Malekian S, Fawcett L, Khan A. *"Exploring the Prevalence of Urinary Incontinence in Multi-Ethnic Refugee Women in Maricopa County, Arizona."*
- M17.** Okoruwa O, Patel P, Karki S, Stephanian B, Murphy E. *"Cardiopulmonary Robotic Endovascular Navigation System for Innovative Approach to Cardiovascular and Pulmonary Minimally Invasive Surgical Repair."*
- M18.** Evans W, Amellal Y, Duchesne G, Ye K, Rohr-Kirchgraber T. *"What the heck is this? People of Color (POC) Search the Internet for Answers to their Skin Problems: A Case Report."*
- M19.** Assadi Y, Rokicki S, Jansen M, Bachmann G. *"Reflection on Research Subject Recruitment for Pregnant Women."*
- M20.** Babar R, Clark F, Krndzija H, Parker L, Patel D, Thawanyarat K, Yao Y, Chappell T. *"Parents' and Caregivers' attitudes towards COVID-19 Vaccination in Children."*
- M21.** Read C, Tracz J, Mhaimeed N, Mainville R, Elzie C. *"Examination of Residency Program Websites for the Use of Gendered Language and Imagery."*
- M22.** Velez L, Jayaraman M, Ravi A, Thussu S, Tanios A, McHowat J. *"Cultivating Leaders in Medicine: An AMWA Chapter's Pilot Educational Mentorship Program."*
- M23.** Levy M, Hunt K, Lindsay K, Mohan V, Mercadel A, Malecki E, Desai R, Sorondo B, Pillai A, Huang M. *"Gender Inequality in Institutional Leadership Roles at US Academic Medical Centers: A Scoping Review."*
- M24.** Edwards S, McNeal S, Coleman J, Holland P, Mitchell S, Gainey T, Dardon N, Newman S, Moon V, Santoro C. *"Village Connect: A for Us, By Us Framework Supporting Black Women and Birthing People during Covid-19."*
- M25.** Treadwell R, Nguyen C, Read C, Tracz J, Firoved A, Wellman L. *"The Impact of Gendered Language in Residency Program Descriptions on Student Perception of Acceptance within Medical Subspecialties."*
- M26.** Chaturvedi S, Rozanski M, Hartenstein B, Lorence J, Galoustian N, Qlu J, Levine S, Werbinski J, Kwolek D. *"The National Student Sex and Gender Education Initiative: an innovative model of medical education, scholarship, and mentorship."*
- M27.** Kim V, McNeilly S, Conroy C. *"Analysis of U.S. Allopathic Medical Schools' Official Statements Concerning Dobbs."*
- M28.** Wani R & Aultman J. *"A Pilot Survey and Workshop Program to Understand and Address Sexual Harassment/Assault on a Health Professional Campus."*

M29. Lee Y, Campany M, Fullerton S, Malik R, Dorsey C, Mercado D, Allen A, Erban Y. *"State of Gender-Based Microaggressions Among Surgeons and Development of Simulation Workshops for Addressing Microaggressions for Surgical Trainees and Students."*

Medical Student Presentations:

M30. Ahmad A, Cohen R, Brennan L. *"Investigation of Emergency Department Visits and Hospitalization Rates of Child Physical Abuse at an Urban Hospital in South Jersey Prior to and During the Covid-19 Pandemic."*

M31. Anwar A, Rao M, Steele L, Kadri A. *"Development of a Novel Fragility Fracture Risk Stratification Model."*

M32. Yaqub, A, Tominack H, Ungureanu, I, Ganapaneni S, Tian W, Scifres C, Robertson S. *"A BRCA1+ Patient with Twin Pregnancy of Complete Mole with Coexisting Fetus."*

M33. Vayalapalli A, Urquhart-Foster K, Davidson L. *"Yoga Gone Wrong: A rare complication of Ehlers Danlos Syndrome."*

M34. Collins A, Noel J, Abraham O, Hornberger S. *"Decision Making in Fertility Preservation Prior to Pursuing Curative Treatments for Sickle Cell Disease."*

M35. Solomon A, Danby M, Glueck A. *"Female Mentor and Learner Engagement (FeMALE) Survey."*

M36. Lauriello A & Siegman M. *"The Hidden History of Women at Jefferson."*

M37. Khan A, Baumberger G, Kenyon T, Zeh J, Peterson R. *"Aligning Inpatient Care Processes for Afghan Refugee Needs During a Mass Resettlement Event: A Single-Site Experience at Riley Hospital for Children at IU Health."*

M38. Aidoo B, Mazurek E, Schwieterman V, Watkins J. *"What Are We Doing for Obstructive Sleep Apnea in Pregnancy?"*

M39. Yeend B, Stoll K, Harvey B, Patel P. *"Utilizing Coronary Angiography to Distinguish Acute Coronary Syndrome from Takotsubo Cardiomyopathy in Female Patients."*

M40. Salmon C, Hartman J, Cook M, Shantharam RV. *"A case of postpartum hypothermia."*

M41. Wu C, Ayers K, Sankar M, Serrano V, Raza M. *"Need for Improving Access to care in Mental Health Facilities for Obese Patients."*

M42. DiFiore E, Sease T, Proffitt R, Pankow J, Springer S, Nijhawan A, Knight K. *"Stigma as a Barrier to Care Among Justice-Involved Individuals at Risk for HIV with Substance Use Disorder."*

M43. Bontrager E, Frey N, Jacobson N, Kartman M, Rakesh M. *"Identifying heavy menstrual bleeding to prevent iron deficiency anemia: Importance of a detailed menstrual history."*

M44. Hassett F. *"Medical Student Access to Oocyte Cryopreservation: Increasing Options for Female Physicians."*

M45. Rodriguez G, Rosete O, Rodriguez N, Vilarino V, Zippl Z, Schachner B, Sfakianaki A. *"Gender Discrepancies Among Maternal-Fetal Medicine Fellowship Program Directors."*

M46. Gupton I, Ruppel A, Manyam M, Harris K. *"Just a Touch of Blue: Atypical Ductal Hyperplasia of the Breast in an Elderly Male."*

M47. Gupton I & Rohr-Kirchgraber T. *"Identifying Obstructive Sleep Apnea in Young Women: Do Sex Biases Block Awareness?"*

M48. Lopez IM, Bankey A, Akhtar MA, Rohr-Kirchgraber T. *"An Unusual Presentation of Neuroleptic Malignant Syndrome."*

M49. Johnson K, Caves K, Fu H. *"Disparities in Preconception and Postpartum Contraceptive Use Among Teen Mothers in Virginia."*

M50. Rush L, Ruppel A, Ferencsik K, Hassett F, Tally T. *"Spontaneous Dissection of Superior Mesenteric Artery: A Rare Cause of Epigastric and Chest Pain in Women."*

M51. Roelker L, McCahon J, Ghasemi SA. *"Clinical Outcome Comparison of the Arciero and LaPrade Techniques For Posterolateral Corner Knee Reconstruction."*

M52. James M, Durbha S, Eckstein L, Tally T, Rohr-Kirchgraber T. *"The Impact of Women Faculty in Male-Dominated Specialties on Students Choice of Career."*

- M53.** Eigsti M, Li G, Giffin D, Grismore M, Johnson A. *"Navigating End-of-Life Conversations with A Female Patient From the Democratic Republic of Congo."*
- M54.** Sullivan M, Ayub J, Jauregui A, Burns C, Gray B. *"Pediatric Postpartum Gallstone Pancreatitis: A Case Study."*
- M55.** Willoughby M, Hartman M, Macha A, Morris A, Jaradat Z. *"Long-term Management of Pregnancy-Related Spontaneous Coronary Artery Dissection (P-SCAD)."*
- M56.** Cook M, Yeend B, Karki S, Stephanian B, Richcreek S. *"A Glimpse into Menstrual Health Literacy in Appalachian Ohio."*
- M57.** Kalifa N, Ye S, Taylor C, Davidson L. *"From Physician to Patient: An End to a Career in Medicine Due to Long COVID."*
- M58.** Johnson S, Kelly E, Ryczak K. *"Effect of Education on Adherence to Recommended Prenatal Practices in the Indigenous Communities of Bocas Del Toro, Panama."*
- M59.** Rodriguez S, Tat I, Barten M, Hesselbrock T, Peterson R. *"Gender Disparities in the Detection and Treatment of Aortic Stenosis."*
- M60.** Barron E, Jeffries A, Pelton S, Vogel K, Byrne B. *"Fetal Injury from Maternal Penetrating Abdominal Trauma in Pregnancy."*
- M61.** Froehlich S, Trudeau K, Beard A, Stone R. *"Barriers to Cervical Cancer Screenings for Low-Income and Uninsured Patients Within the United States."*
- M62.** Sisroe T, Santos AD, Li D, Bhoj EJ, Nelson B, Sobering AK. *"A de novo Variant in RFX7 Causing Developmental Delay and Intellectual Disability."*
- M63.** Heitz A, Perez E, Popp V, Sutton M, Raza M. *"Substance-induced psychosis vs. Primary psychotic disorder: Does the difference matter."*
- M64.** Zuch C, McQuillan J, Thambra A, Amaudo C. *"Barriers to Medication-Assisted Treatment for Opioid Use Disorder Refractory to Buprenorphine in Intrapartum Patients."*
- M65.** Hooper AM, Shelton TM, Adeola A, Slade A, Rivera M. *"Comparison of Ultra-Mini PCNL and Mini-PCNL Outcomes in an Adult Population."*
- M66.** Flippo A, Rushlow K, Repetto M, Chantada CM. *"The Impact of Migraine on Medical Students: A Review of Literature."*
- M67.** Bankey A, Rosenthal K, Crowley M, Stone M, DeBusk R, Snapp C, Baldwin A. *"An Interprofessional and Interdisciplinary Approach to Autoimmune Conditions."*
- M68.** D'Agrosa A & Barrett E. *"Visibility of Statements of Support for Gender Affirming Care Amongst the Medical Professional Societies in the US."*
- M69.** Ramirez A, Rohr-Kirchgraber T, Rosas E, Humes K. *"The Price of Low Health Literacy."*
- M70.** Horvath A, Repetto M, Shackleford M, Thi A, Twells R, Batra K, Netski D, Gomez N, Free L. *"Analyzing the Quality and Reliability of Contraceptive Content on TikTok: A Feasibility Study."*
- M71.** Gettelfinger A, Komanapalli H, Bell K, Schaller S, Alvarenga KE, Zhang X, *"Importance of Regular Prenatal Care: A Placenta Percreta Sudden Death Case Report."*
- M72.** Rietmann A & Werbinski J. *"Sex & Gender in Human Papilloma Virus (HP) Infection."*
- M73.** Patel B, Nickerson M, Waters H, Arnaudo C. *"Role of Programming to Reduce Substance Use Associated Mortality in Postpartum Patients with High ACE Scores."*
- M74.** Sloat B, Collins N, Day C. *"Reduction Mammoplasty as a Treatment of Thoracic Outlet Syndrome."*
- M75.** Henderson B, Terris M, Rohr-Kirchgraber T. *"Delayed Diagnosis of Bladder Cancer After Initial Hematuria Presentation in Women."*

- M76.** Mulcahey C, Harvey B, Orozco M, Vultorius D, Robles M. *"Honoring the Oath: Transplant Ethics in a non U.S. Citizen Population."*
- M77.** Marks C, Slaughter M, Stopa M, Trueblood M, Stack M, Hinojosa ML. *"Advanced Cervical Cancer in Patients with HIV/AIDS: an outcome rooted in barriers to care."*
- M78.** Gallagher C, Sivamohan A, Andrews M, Coffey G, Raza M. *"The Use of Dialectical Behavior Therapy in Patients with Suicidal Ideation."*
- M79.** Tran E, Torelli V, Lorniguen C. *"The Role of Osteopathic Manipulative Therapy in Improving 6-Minute Walk Test in Patients with Chronic Obstructive Pulmonary Disease."*
- M80.** Schach E, Alla S, Bachmann G. *"Music. Does it Belong on All Labor and Delivery Units."*
- M81.** Dale-Johnson E, Lopez M, Rushlow K, Toates S. *"Persistent Opioid Use in Opioid-Naive Patients after Cesarean Delivery: A Literature Review."*
- M82.** Mehrsa S, Razavi S, Hale E, Alayli A, Reid M, Reilly T, Katzell L. *"A Growing Need for Transgender Care in Student-Run Clinics."*
- M83.** Troitino I, Shephard L, Plant O, Yeend B, Raza M. *"A Medication or Gas Station Heroin? Tianeptine's Role in the Opioid Epidemic."*
- M84.** Crawford J, Spivey E, Kaur A, Magee L, Grommon E. *"Leveraging Open Access Data to Inform Firearm Injury Prevention."*
- M85.** Crawford J, King C, Witting H, Sawyer J, Fogel J. *"A Case of 'Trans Broken Arm Syndrome' in Mental Health Care."*
- M86.** Thomas J, Cox K, Salinger S, Samson A, Darivemula S. *"Reimagining Medicine: Creating a Virtual Arts Festival to Address Race, Racism, and Cultural Awareness in Medicine."*
- M87.** Jones J, Ho K, Boardley E, Adaniya K, Botkin J, Caudill D. *"Hike More, Worry Less: Development of a Hobby Wellness Initiative for an Academic Hospitalist Group."*
- M88.** Daniels K, Board SG, Brown C, Qu'd D, Nelson B, Li D, Bhoj EJ, Simpson BN, Sobering AK. *"Case Description of SBBYSS in a Young Female."*
- M89.** Dunn K. *"Weight requirements in the diagnosis of anorexia nervosa impede access to care for patients with atypical anorexia."*
- M90.** Dauterman L, Lentsch K, Dawes A, Reynosis K, Gill R, Christman M. *"Homicide as Leading Cause of Pregnancy-Associated Death in the US."*
- M91.** Morning M, Koester J, Shah P, Kaderabek A. *"Advanced Breast Cancer Presentation in a Rural Community: Has COVID-19 and mistrust in healthcare following the pandemic impacted cancer treatment outcomes?"*
- M92.** Escanuela M, Sisroe T, Davidson L. *"Some Hoof beats ARE zebras: a case of Sphincter of Oddi dysfunction and Autonomic Nervous System Disorders."*
- M93.** Holohan M, Szilagyi HA, O'Connor MC, Adindu U, Haas A, Hadad I. *"The Mental Toll of Delaying Gender Affirming Surgeries and Need for More Gender Affirming Surgeons."*
- M94.** Moores M, Toates S, Lima C, Asare B, Melik D, Shetty M. *"Potential Practices to Grow Interest in Diagnostic Radiology among Female Medical Students."*
- M95.** Campbell M, Stoll K, Emerick S, Farris K, Mims LA. *"Rising Gun Violence and the Impact on Reproductive Health."*
- M96.** Kalifa N, Rush L, Ye S, Rohr-Kirchgraber T. *"Can I tell you what to do if I am not doing it myself? Nutrition Education in Medical School."*
- M97.** Owusu R, Bode L, Jansen N, Libke M, Mehta R. *"Cerebral Vein Thrombosis in Concomitant Combination Oral Contraceptive Pill Use and COVID-19."*

M98. Landau R, Hale E, Taldone S. *“Gender/Sexual Orientation Representation of Dual Medical Degree Candidates and Graduates: A Scoping Review.”*

M99. Patel R, Hutchinson-Colas J, Bachmann G. *“Labor and Delivery Care: Expanding Patient Informed Consent.”*

M100. Friel R, Crowley E, Ali Y, Bell L, Tian W, Scott N. *“Emergent Intervention of a Non-Communicating Rudimentary Uterine Horn Pregnancy.”*

M101. Ye S, Ye K, Song D, Escanuela M, Carroll W, Iyer M. *“A Case of an Enlarged Blind Spot and White Dots in a Young Girl.”*

M102. Jivraj S, Vyas P, Friedlich N, Duican AC, Rivera LL. *“Texas Reproductive Health Education and the Benefit of Menstrual Education Workshop.”*

M103. O'Bryant S, Cope J, Gulle J. *“Awareness of the Female-Specific Signs and Risk Factors of Cardiovascular Disease Among Women in a Rural Setting.”*

M104. Lovins S, Myers N, Caudy C, Cuddy D. *“Human Acellular Vessels (HAV) - A Novel Graft to Decrease Vascular Access Complications in Women.”*

M105. Pandhiri T, Gatz A, Pamidimukkala U, Rusiniak K, Mehta R. *“Iron Deficiency without Anemia - Iron Supplementation Can Still Improve Fatigue.”*

M106. Luster T, Karam M, Sloat B, Mederos A, Pavlik L, Duncan F. *“Acute Heart Failure in the Setting of Post-Covid MIS-C: A Case Report.”*

M107. Johnston TR, Rhangos I, Thawanyarat K, Parker L, Rohr-Kirchgraber T. *“‘I am not just a tired mom.’ A young nonsmoker has to diagnose her own malignancy.”*

M108. Ekume S, Arfan S, Georges F, Shahzad M. *“End Stage Renal Disease in a 29-year-old male With Aneurysmal Arteriovenous Fistulas Status Post Right-Kidney Transplant.”*

M109. Melkis J, Gresham L, Choi B, Cyr J, Huang C, Beecker J. *“Draping in Dermatology: A Physician's Perspective.”*

M110. Gall A, Brammer M. *“Fracture Healing During Pregnancy: A Case of Femoral Shaft Fracture Nonunion in a Patient Who Became Pregnant Shortly after Surgery.”*

Pre-medical Student Presentations:

S1. Chau C, Lesser M, Lutnick A. *“Assessing physician responses to suspicion or patient disclosure of domestic violence in the United States.”*

S2. Zada FM, Kandahari N, Kayhani N, Noor Z, Rahim Z, Ivey SL. *“Afghan Clinic: Bridging the Gap in Health Literacy Among Afghan Refugees.”*

S3. Crowther M & Nguyen QT. *“Pediatric Behavior and Development Training Material Through the Lens of Identity, Diversity, and Inclusion.”*

S4. Patel N, Perkiss E, Sarich T, Hessami K, Hutchinson-Colas J, Bachmann G. *“Antenatal Herbal Medicine Use in Africa.”*

S5. Maleki N, Goeltz J, Rohr-Kirchgraber T. *“‘But I Eat Pasta with Sauce!’ A Case Study Exemplifying the Importance of Adequate Folate Intake in Adolescent Women.”*

S6. Song R, Sundaram P, Kaserooni L, Rohr-Kirchgraber T. *“Health Insurance, an Unexpected Medical Student Burden.”*

AMWA Fellowship

Fellowship in the American Medical Women's Association is an honor achieved by those recognized for their integrity, professional excellence, scholarship, teaching and mentoring activities, leadership, public service and commitment to the mission of AMWA.

AMWA Fellowship Pledge

As a Fellow of the American Medical Women's Association, I affirm my commitment to the highest traditions of the medical profession, to the ethical practice of medicine, to my professional integrity, and my pursuit of knowledge.

I will continue to act in the best interests of my patients, seek advice when needed, and respect my colleagues. I will provide assistance to those in need to the best of my ability. I pledge to support the mission and vision of the American Medical Women's Association, to strive to improve the health of women and all people, to help advance women in medicine, to serve and respect this Association, and to uphold the highest standards of this Association and the medical profession.

2023 Fellows

Dr. Deborah Kwolek
Dr. Olapeju Simoyan

Past AMWA Fellows

Dr. Neelum Aggarwal, Dr. Holly Atkinson,
Dr. Danielle Barnes, Dr. Eileen Barrett,
Dr. Allison Batchelor,
Dr. Sharon Batista, Dr. Nicole Bentze,
Dr. Wendy Bernstein, Dr. Stephanie Bonne,
Dr. Monica Broome, Dr. Susan D. Carter,
Dr. Paulette Cazares, Dr. Eliza Chin,
Dr. Nancy Church,
Dr. Claudia Morrissey Conlon,
Dr. Wendi Wills El-Amin,
Dr. Shahnaz Fatteh, Dr. Helane Fronek,
Dr. Diana Galindo, Dr. Roberta Gebhard,
Dr. Mary Guinan, Dr. Farzanna Haffizulla,
Dr. Suzanne Harrison, Dr. Susan Hingle,
Dr. Satty Keswani, Dr. Janelle Marra,
Dr. Darilyn Moyer, Dr. Padmini Murthy,
Dr. Chemen Neal, Dr. Kari Nelson,
Dr. Connie Newman, Dr. Monica D. Ormeno,
Dr. Janet Osuch, Dr. Karen Poirier-Brode,
Dr. Vidhya Prakash,
Dr. Theresa Rohr-Kirchgraber,
Dr. Ana Maria Viamonte Ros, Dr. Nicole Sandhu,
Dr. Stacy Sattovia, Dr. Fatima Cody Stanford,
Dr. Omega Silva, Dr. Vidya Sundareshan,
Dr. Kimberly Templeton, Dr. Luanne Thorndyke,
Dr. Kanani Titchen, Dr. Laurel Waters,
Dr. Stacey Watt, Dr. Janice Werbinski,
Dr. Tina Schade Willis, Dr. Dawn Wyllie

We Thank Our Corporate Members for Their Support of AMWA

Gold

Amgen

Silver

Abbott

Lilly

Merck

Novo Nordisk

Organon

Pfizer

Bronze

ARC Fertility

Astellas

Covis Pharma

Eisai

Hologic

PhRMA

Sanofi

University of Arizona

W.P. Carey School of Business

University of Tennessee

Haslam College of Business

Friend

Cooper Surgical

Frame Fertility

Northwestern University

Pritzker School of Law

Partnership for Safe Medicines

SUPPORTERS & EXHIBITORS

Event Supporters

Our acknowledgment to the following for their support of this program:

Gold \$10,000+

Merck

Bronze

Emory University
Woodruff Health Sciences Center

Friend

Northwell Health
Walmart

Medical Student Partners

Jaanuu
Pixorize
ScholarRx

Exhibitors:

Avologi Scientific
Chetna Singh Scarves
Klauder Real Estate of RE/MAX One and Timothy Johnson of First National Bank
Let's Lead, LLC
Master of Medical Management Program, Carnegie Mellon University
Pearson Ravitz, LLC.
Sewn for Good
St. Rose Dominican Hospitals GME
Sutter Health
United States Navy Medical Recruiting

Specialty/Residency Fair:

Blueprint Test Preparation
Dignity Health St. Rose Dominican Hospitals Internal Medicine Program
Kaiser Permanente Oakland Internal Medicine Residency Program
St. Rose Dominican Family Medicine Residency Program
Sutter Health
Specialties: Anesthesiology, Internal Medicine, Pediatrics, Urology

Premedical Fair:

Blueprint Test Preparation
Rowan-Virtua School of Osteopathic Medicine
Saba University School of Medicine
Philadelphia College of Osteopathic Medicine

Donors

Dr. Eliza Chin
Dr. Robin Faye
Dr. Janet Freedman
Dr. Caroline Gomez-Di Cesare
Dr. Katrina Green

Dr. Bonnie Hamilton
Dr. Laura Helfman
Dr. Kathy Keller
Dr. Connie Newman
Dr. Theresa Rohr-Kirchgraber
Dr. Paul Kirchgraber

Dr. Karen Poirier-Brode
Dr. Rachel Schonberger
Dr. Janice Werbinski
Dr. Amanda Xi

Women in Medicine Reception Supporters

Our acknowledgment to the following for their support of this program:

Presenting Sponsors

The College of Physicians of Philadelphia
American College of Physicians
The Hedwig van Ameringen Executive Leadership in Academic Medicine (ELAM®) Program
Women in Medicine Legacy Foundation
Alliance for Women's Health and Prevention

Friend

Philadelphia County Medical Society

PROGRAM COMMITTEE

Program Co-Chairs:	Dr. Eleanor Chu, Dr. Theresa Rohr-Kirchgraber
Program Director:	Dr. Amanda Xi
AMWA President:	Dr. Theresa Rohr-Kirchgraber
MWIA North American Congress Chair:	Dr. Connie Newman
Deputy Director:	Jodi Godfrey
Assistant Director:	Katherine Ross
Resident Conference Co-Chairs:	Dr. Cherry Au, Dr. Subhjit Sekhon
Medical Student Conference Chair:	Emily Marsico
Premedical Student Conference Chair:	Layla Aboufares
Innovation Chair:	Dima Elissa
Speaker Subcommittee Co-Chairs:	Dr. Theresa Rohr-Kirchgraber, Dr. Ana Maria Lopez
Clinical Hot Topics Co-Chairs:	Dr. Julianne Stout
Poster Chair:	Dr. Kate Stampler
Chair of Research & Development	Rose Caston
Awards Chair:	Dr. Susan Hingle
Fellowship Co-Chairs:	Dr. Suzanne Harrison, Dr. Kari Nelson, Dr. Connie Newman
Gala Co-Chairs:	Dr. Shweta Akjhour, Dr. Connie Newman.
Annual Meeting Coaching Co-Chairs:	Dr. Tracy Asamoah
Mentorship Chair:	Dr. Katherine Sharkey
CME Team:	Karen Pierce, Kim Denny
Artist in Residence:	Dr. Sami Ali, Leana Pande
AV Technology Team:	Dr. Amanda Xi
Videography:	John Goetz, Ivan Higgins
Graphic Design:	Dr. Amanda Xi, Sarah Hocter
Director of Communications:	Heather Van Ness
Event Manager:	Kamilah Hardy
DJ Services:	Carl Bolling

Additional Program Committee Members

Dr. Ana Maria Lopez, Dr. Aneesa Majid, Angela Rutkowski, Anupriya Grover-Wenk, Ariela Marshall, Beth Piraino, Dr. Chyanne Brown, Dr. Cuckoo Choudhary, Coral MarA Chantada, Courtney Gorrell, Deborah Keller, Diana Tzeng, Dina Elantably, Donna Tullis, Dr. Eileen Barrett, Eliana Hempel, Emily Ames, Dr. Erika Yoo, Farzana Rashid Hossain, Geraldine Idoniboye, Dr. Heather Bell Williams, Jara Crawford, Julia Lorence, Julie Vieth, Karen Barcenias-Villareal, Lehka Patel, Lily Tran, Lorraine Claire De Velez, Mana Rao, Mariam Dar, Dr. Mary Rorro, Merly Cepada, Nataly Mantano, Dr. Nicole Bentze, Olapeju Simoyan, Riddhi Shah, Riddhimaa Sinha, Ritika Samanta, Dr. Robin Faye, Rosy Thachil, Sabra Hanna, Sabrina Rainey, Samantha Lai, Sarah P Basharkhah, Dr. Sheetal Ajmani, Sneha Kamarajuggada, Sofia Russo, Subhjit Sekhon, Syeda Akila Ally, Thea Lance, Virali Patel

ABOUT AMWA

MISSION: *To advance women in medicine, advocate for equity, and ensure excellence in health care.*

VISION: *A healthier world where women physicians achieve equity in the medical profession and realize their full potential.*

VALUES: *Integrity, Diversity, Equity, Inclusion, Collaboration, Mentorship*

PILLARS OF WORK

ADVANCE WOMEN IN MEDICINE

Career Development
Physician Well-being

ADVOCATE FOR EQUITY

Gender Equity
Public Policy
Diversity, Equity, and Inclusion

EDUCATION

Sex/Gender Specific Health
Women's Health
Public Health

KATHRYN KO, MD, MFA, AMWA ARTIST IN RESIDENCE

Kathryn Ko, MD, MFA, AMWA Artist in Residence 2022-2023: Sami Ali, MD



Sami Ali, MD is an Emergency Medicine physician and modern representational artist who credits her passion for painting to her curious nature and her love of a challenge. As an EM physician, she prides herself on making quick decisions and staying focused and efficient. These same attributes are invaluable in her art as well, as she is a plein air painter, painting outdoors from life, capturing quickly changing light. Her intuitive sense of color and textural use of paint both contribute to her modern style. She loves working with palette

knife and finds portrait painting analogous to completing the Sunday NY Times Crossword. In 2022, Sami garnered international media attention for her art show “The Mind of a Healthcare Worker During the COVID-19 Pandemic.” She obtained her medical degree from the University of Alabama School of Medicine and completed her Emergency Medicine Residency at LSU in Baton Rouge. She is Board Certified in Emergency Medicine and continues to practice in the busiest emergency room in Alaska, Providence Alaska Medical Center. For her AMWA Artist in Residence (AIR) year, Sami focused on honing her palette knife skills, both in landscape and portraiture. She is thankful for the opportunity that the AMWA AIR has provided and is proud to present two art pieces to AMWA.



Kathryn Ko, MD, MFA, AMWA Artist in Residence 2022-2023: Leana Pande



Leana Pande is a self-taught artist in watercolor, acrylic paint, gouache, pen, and more. She is currently a second-year medical student at the Touro College of Osteopathic Medicine. She graduated from Wilkes University in three years with a double major in Neuroscience and Psychology. Her work has previously been published by the American Medical Student's Association, the Geisinger Commonwealth School of Medicine, and the Student Osteopathic Medical Association. She had a solo exhibition in Northeastern Pennsylvania in 2021 in the Wyoming Valley Art League Circle Centre for the Arts. She has also previously taught watercolor in the Everhart Museum in Scranton,

PA. During her artist-in-residence, Leana has been developing a body of mixed media art, exploring the patterns and shapes in human anatomy. The year has been about striking a balance between creating an eye-catching aesthetic while still emphasizing scientific structures. With permission from her school's anatomy department, she was able to reference donors to create compositions that she added color and detail to. The piece she is donating to the AMWA archives is a modern and colorful approach to the female reproductive system.



KATHRYN KO, MD, MFA, AMWA ARTIST IN RESIDENCE

Kathryn Ko, MD, MFA, AMWA Artist in Residence 2023-2024: Florence Desrosiers, MD, MBA



Florence Desrosiers, MD, MBA is double boarded in Pediatrics and Adolescent Medicine. Originally from Haiti, Florence's ardor for figurative painting and portraiture began long before she obtained her MD, and manifests in over four decades spent as a self-taught artist. Following her move to the US, Dr. Desrosiers also completed a fellowship in adolescent medicine in New York. She is now a medical director in Seattle and works in utilization management for a healthcare organization. Dr. Desrosiers, being a fellow of the American Academy of Pediatrics likewise serves on the American Board of Pediatrics on the Adolescent Medicine Sub-board.

Florence is fascinated by the inherent humanity of creative expression and interpersonal relations. During her AIR year she intends to create a series of paintings primarily focused on concepts of face and expression as they relate to healthcare support workers. Her body of work will seek to investigate and present both the grueling intricacies and inspiring familiarities of their lives. Through this project she hopes to give a face to and increase the visibility of healthcare support workers who support women in medicine.



AMWA AND THE MEDICAL HUMANITIES

The American Medical Women's Association embraces an active community of members who enrich their pursuit of medicine through the arts. This merging of these two fields provides both an outlet for personal expression as well as an opportunity to foster more enriching care for our patients. AMWA's medical humanities communities reflect the study and practice of various creative endeavors, including music, visual, literary, history, and performing arts inspired by their intersection with medicine.

During this meeting, enjoy the offerings in the visual and performing arts from AMWA's medical humanities communities.

WHITE ROSE CEREMONY

The White Rose Ceremony honors AMWA members who have recently passed on. A red rose is put into a vase for each member and a white rose for each past president.



"The White Rose Ceremony will always help us take a moment to stop and think of the purity and dedication of our ancestors and their collective wisdom and accomplishments."

--Mary Ellen Morrow

AMWA LEADERSHIP 2022-2023

President – Dr. Theresa Rohr-Kirchgraber
President-Elect – Dr. Elizabeth Garner
Immediate Past President – Dr. Janice Werbinski
Treasurer – Mr. Khawaja Shams
Secretary – CAPT Paulette Cazares, MD
Governance Chair – Dr. Nicole Sandhu
Directors –
Dr. Bisi Alli
Dr. Susan Thompson Hingle
Dr. Shobha Krishnan
Dr. Donnica Moore
Dr. Arghavan Salles
Dr. CS Tse
Dr. Monique Mun
Dr. Alexandra Goodwin
Alexandra Pincus
Julia Burns
Courtney Chau
Kaylee Travis
Executive Director – Dr. Eliza Lo Chin
Deputy Director – Jodi Godfrey
Associate Director – Danielle Carrier
Assistant Director – Kat Ross
Dr. Nicole Bentze – Regional Governors Lead
Dr. Jodi Frances Abbott – Region 1 Governor
Dr. Akwi W. Asombang – Region 1 Lt. Governor
Dr. Poonam Desai – Region 2 Governor
Dr. Mana Rao – Region 2 Lt. Governor
Dr. Robin Faye – Region 3 Governor
Dr. Shweta Akhouri – Region 4 Governor
Dr. Lauren Walter – Region 5 Governor
Dr. Sherell Hicks – Region 5 Lt. Governor
Dr. Ruqiya Shama Tareen – Region 6 Governor
Dr. Kellie C Lease Stecher – Region 7 Governor
Dr. Molly A. Uhlenhake – Region 7 Lt. Governor
Dr. Kelli Cohen Fein – Region 8 Governor
Dr. Blair Thwaites – Region 8 LT. Governor
Dr. Gloria Wu – Region 9 Governor

Residency Division Leadership
Physician Lead - Dr. Marissa Orenstein Kilbrew
President – Dr. Monique Mun
President-Elect – Dr. Alexandra Goodwin
Treasurer – Dr. Amy Le
Secretary – Dr. Clara Sze
Advocacy Chair – Dr. Mary Beth Gadarowski
Awards Chair – Dr. Zara Wadood
Conference Co-Chair – Dr. Cherry Au
Conference Co-Chair – Dr. Subhjit Sukhon
Diversity Chair – Dr. Sondas Al Khatib
Mentorship Chair – Dr. Selena Park
Recruitment Chair – Dr. Anusha Adkoli

Student Division Leadership
President – Alexandra Pincus
President-Elect – Julia Burns
Treasurer – Syeda Akily Ally
Treasurer-Elect – Ashley Anderson
Secretary – Hasiat O Madamidola
Advocacy Chair – Shirin Ferdosian
Awards Chair – Maria Perez
Conference Co-Chair – Juliana Gomez
Conference Co-Chair – Emily Marsico
External Relations Chair – Lucia Schroeder
Global Health Chair – Syeda Akily Ally
Program Chair – Brooke Hartenstein
Mentorship Chair – Morgan Levy
Recruitment Chair – Lekha Yesantharao

Social Media Chair – Karen Barcenar-Villarreal
Region 1 Director – Ariana Nodoushani
Region 2 Director – Afeerah Ahmad
Region 3 Director – Shauna Wassmus
Region 4 Director – Kristi Bears
Region 5 Director – Bridget Smith
Region 6 Director – Kate Ryan
Region 7 Director – Kailey Kowalski
Region 8 Director – Brittany DK Gratreak
Region 9 Director – Kalkena Sivaneseam

Premedical Student Division
Physician Lead - Dr. Heather Bell Williams
President – Courtney Chau
President-Elect – Kaylee Travis
Treasurer – Tiffany Vereen
Secretary – Krupa Patel
Advocacy Chair – Iulia Dobrin
Awards Chair – Dana Shuaibi
Conference Co-Chair – Layla Aboufares
Conference Co-Chair – Ritika Samanta
External Relations Chair – Sai Chelluri
Global Health Chair – Azaria Au
Mentorship Chair – Maya Roytman
Program Chair – Allison Kim
Recruitment Chair – Varshini Vakulabharanam
Social Media Chair – Flora Jin
Region 1 Director – Iris Dupanovic
Region 2 Director – Sophia Hai
Region 3 Director – Srinidhi Seshadri
Region 4 Director – Xori Green
Region 5 Director – Kameelah Hollis
Region 6 Director – Sneha Magesh
Region 7 Director – Emma Krebs
Region 8 Director – Yara Akiel
Region 9 Director – Cailin Born

Region 1 CT, ME, MA, NH, RI, VT
Region 2 NJ, NY
Region 3 DC, DE, MD, PA, VA, WV
Region 4 FL, GA, NC, SC
Region 5 AL, LA, MS, TN, The Caribbean
Region 6 IL, IN, KY, MI, OH
Region 7 AR, IA, KS, MN, MO, NE, ND, OK, SD, WI
Region 8 AZ, CO, ID, MT, NM, NV, TX, UT, WY
Region 9 AK, CA, HI, OR, WA

Committee and Task Force Chairs
PILLAR: DEVELOPMENT -
Leadership Council – Dr. Connie Newman, Dr. Monica Broom, Dr. Nicole Sandhu
Mentoring – Dr. Kate Sharkey, Dr. Amy Davis
Physician Wellness Mental Health – Dr. Kimberly Templeton, Dr. Tracy Asamoah
Humans Before Heros – Dr. Kimberly Templeton, Dr. Loice Swisher
IMG – Dr. Sheila Toro, Dr. Nulifer Yalcin
Infertility – Dr. Paula Amato, Dr. Cindy Duke, Dr. Torie Comeaux
Medical Humanities
Dance, Theater, and Medicine – Jasmine Thomas, Andrea Samson
Literary AMWA – Dr. Anju Goel, Cristina Go
Media AMWA – Dr. Eliza Chin
Music in Medicine – Dr. Mary Rorro
Studio AMWA – Dr. Karen Poirier-Brode, Leana Pande (Artist in Residence), Dr. Sami Ali (Artist in Residence)

Coaching - Dr. Yashoda Bhaskar, Dr. Pamela Ludmer
PILLAR: ADVOCACY
Gender Equity – Dr. Rosy Thachil, Dr. Briana Clark
Advocacy Committee – Dr. Eileen Barrett, Dr. Rita Kuwahara
Diversity and Inclusion Task Force – Dr. Neelum Aggarwal, (LGBTQ) Dr. Jane Petro, Dr. Mollie Marr, Dr. Janelle Marra, Dr. Chyanne Brown, (anti-racism) Dr. Nicole Sandhu
PILLAR: EDUCATION
Pillar Lead – Dr. Jodi Abbott
AMWA COVID Lead – Dr. Saralyn Mark
Sex and Gender Health Collaborative – Dr. Mary Rojek, Dr. Caroline Paul
Program Committee – Dr. Eleanor Chu
Nutrition and Medicine – Dr. Masina Wright
Global Health – Dr. Padmini Murthy
HPV and Cervical Cancer – Dr. Shobha Krishnan
Opioid Addiction in Women – Dr. Connie Newman, Dr. Kim Templeton
Gun Violence Prevention - Dr. Nina Agrawal
Physicians Against the Trafficking of Humans (PATH) – Dr. Traci Kurtzer, Dr. Aarti Vala, Graduate Medical Education – Dr. Annie Wishna, Dr. Kim Templeton
INTERNAL
Finance Committee – Mr. Khawaja Shams
Governance Committee – Dr. Nicole Sandhu
American Women Hospitals Services – Dr. Laura Helfman, Dr. Sara Schwanke Khilji, Dr. Diana Fox, Hari Ponduri, (Bryn) Elise Vance, Erika Olsen, Kristy Leker, Erin Coonahan
Menstrual Equity - Dr. Padmini Murthy, (Bryn) Elise Vance, Alexandra Alvarez
Awards Committee – Dr. Susan Hingle
Corporate Advisory Board – Dr. Eliza Chin, Lisa Tate
Development – Khawaja Shams, Dr. Donnica Moore
Dr. Linda Brodsky Fund Advisory Board – Dr. Roberta Gebhard
Fellowship Program Task Force – Dr. Suzanne Harrison, Dr. Kari Nelson
Leadership Program – Dr. Tammy Chang (ELEVATE), Dr. Briana Money (EVOLVE)
Membership Committee – Dr. Jody Lack, Dr. Robert Robinson
AMWA WWI Exhibit – Leslie Royce

2023-2024 Board of Directors

President – Dr. Elizabeth Garner
President-Elect – Dr. Susan Hingle
Immediate Past President – Dr. Theresa Rohr-Kirchgraber
Treasurer – Khawaja Shams
Secretary – CAPT Paulette Cazares, MD
Directors –
Dr. Bisi Alli
Dr. Octavia Cannon
Dr. Vidhya Prakash
Dr. Arghavan Salles
Dr. Chung Sang Tse
Dr. Gloria Wu
Dr. Alexandra Goodwin
Dr. Jaclyn Del Pozzo
Julia Burns
Emily Forester
Kaylee Travis

AMWA HISTORY

AMWA Presidents

1915-18 Bertha Van Hoosen, MD
 1918-19 Angenette Parry, MD
 1919-20 Etta Gray, MD
 1920-21 Martha Tracy, MD
 1921-22 Elizabeth Bass, MD
 1922-23 Grace Kimball, MD
 1923-24 Kate Campbell Hurd-Mead, MD
 1924-25 Katherine C. Manion, MD
 1925-26 Anna E. Blount, MD
 1926-27 Frances E. Rose, MD
 1927-28 Elizabeth B. Thelberg, MD
 1928-29 Louise Tayler-Jones, MD
 1929-30 Ellen C. Potter, MD
 1930-31 Olga Statsny, MD
 1931-32 L. Rosa H. Gantt, MD
 1932-33 Esther Pohl Lovejoy, MD
 1933-34 Mary O'Malley, MD
 1934-35 Lena K. Sadler, MD
 1935-36 S. Josephine Baker, MD
 1936-37 Catharine Macfarlane, MD
 1937-38 Mabel M. Akin, MD
 1938-39 Kate B. Karpeles, MD
 1939-40 Nelle S. Nobel, MD
 1940-41 Elizabeth Mason-Hohl, MD
 1941-42 Emily D. Barringer, MD
 1942-43 Helena T. Ratterman, MD
 1943-44 Zoe A. Johnston, MD
 1944-45 Alice S. Wooley, MD
 1945-46 Kate Savage Zerfoss, MD
 1946-47 Helen Johnston, MD
 1947-48 Mabel E. Gardner, MD
 1948-49 Elise S. L'Esperance, MD
 1949-50 Dorothy Wells Atkinson, MD

1950-51 Elizabeth S. Waugh, MD
 1951-52 Amey Chappell, MD
 1952-53 Evangeline Stenhouse, MD
 1953-54 Judith Ahlem, MD
 1954-55 Camille Mermod, MD
 1955-56 Esther C. Marting, MD
 1956-57 Camille Mermod, MD
 1957-58 Elizabeth S. Kahler, MD
 1958-59 Katherine W. Wright, MD
 1959-60 Jessie L. Brodie, MD
 1960-61 Claire F. Ryder, MD
 1961-62 Edith P. Brown, MD
 1962-63 Ruth Hartgraves, MD
 1963-64 Rosa Lee Nemir, MD
 1964-65 Bernice Sachs, MD
 1965-66 Margaret J. Schneider, MD
 1966-67 Elizabeth A. McGrew, MD
 1967-68 Alice D. Chenoweth, MD
 1968-69 Laura E. Morrow, MD
 1969-70 Josephine E. Renshaw, MD
 1970-71 Minerva S. Buerk, MD
 1971-72 Frances K. Harding, MD
 1972-73 Ruth Fleming, MD
 1973-74 Margaret P. Sullivan, MD
 1974-75 Carolyn S. Pincock, MD
 1975-76 Catherine W. Anthony, MD
 1976-77 Claudine M. Gay, MD
 1977-78 Charlotte H. Kerr, MD
 1978-79 A. Lois Scully, MD
 1979-80 Joanne L. Linn, MD
 1980-81 Vivian K. Harlin, MD
 1981-82 Christine Haycock, MD
 1982-83 Anne Barlow Ramsay, MD
 1983-84 Lila Kroser, MD
 1984-85 Clair Callan, MD, MBA

1985-86 Constance Battle, MD
 1986-87 Mary Jane England, MD
 1987-88 Doris Bartuska, MD
 1988-89 Lila Wallis, MD, MACP
 1989-90 Susan Stewart, MD
 1990-91 Roselyn Epps, MD
 1991-92 Lillian Gonzalez-Pardo, MD
 1992-93 Leah Dickstein, MD
 1993-94 Kathryn C. Bemann, MD
 1994-95 Diana Dell, MD
 1995-96 Jean Fourcroy, MD, PhD
 1996-97 Debra Judelson, MD
 1997-98 Sharyn Lenhart, MD
 1998-99 Clarita Herrera, MD
 1999-2000 Catherine Henry, MD
 2000-02 Omega Silva, MD, MACP
 2002-03 Elinor Christiansen, MD
 2003-04 Lynn Epstein, MD
 2004-05 Diane Helentjaris, MD
 2005-06 Carolyn Webber, MD
 2006-07 Susan Ivey, MD, MHSA
 2007-08 Diana Galindo, MD
 2008-09 Claudia Morrissey, MD, MPH
 2009-10 Beatrice S. Desper, MD
 2010-11 Eliza Lo Chin, MD, MPH
 2011-12 Mary Guinan, PhD, MD
 2012-13 Gayatri Devi, MD
 2013-14 Eleni Tousimis, MD
 2014-15 Farzanna S. Haffizulla, MD
 2015-16 Theresa Rohr-Kirchgraber, MD
 2016-17 Kim Templeton, MD
 2017-18 Suzanne L. Harrison
 2018-19 Connie B. Newman, MD
 2019-20 Roberta E. Gebhard, DO
 2020-21 Nicole Sandhu, MD, PhD
 2021-22 Janice Werbinski, MD
 2022-23 Theresa Rohr-Kirchgraber, MD

AMWA Historic Landmarks



Bertha Van Hoosen, M.D. Historic Marker
 Location where AMWA was founded
 410 South Michigan Avenue, Chicago, IL



Rochester Hills Museum at Van Hoosen Farm
 Home of Dr. Bertha Van Hoosen
 1005 Van Hoosen Rd, Rochester, MI 48307
<http://www.rochesterhills.org>



AMWA Legacy Exhibit - Legacy Center
 Drexel University School of Medicine
<http://archives.drexelmed.edu>

On-line Exhibitions & Resources

www.amwa-doc.org

Faces of AMWA
 Studio AMWA (Art)
 Literary AMWA (Writing)
 Media AMWA (Film)
 Music & Medicine
 Dance, Theater, and Medicine
 Women Physicians in WWI
 Women Physician Suffragists
 Elizabeth Blackwell Medal Awardees
 AMWA Past Presidents

AMWA Centennial Book and AMWA Centennial Video - www.amwa-doc.org

AMWA Legacy Quilt

Documentaries:

- Pioneer Family: On Van Hoosen Farm-
<http://www.dptv.org/video/pioneer-family-van-hoosen-farm>
- At Home and Over There: American Women Physicians in WWI.

AMWA Leadership Development for Women Physicians

The American Medical Women's Association (AMWA) aims to impact the gender gap in healthcare leadership. We offer a selection of dynamic and innovative programs to cover issues not typically addressed during medical training. AMWA is also committed to nurturing healthcare leaders of the future who will reflect the patients they serve.

Develop the Leader Within... Enhance your visibility and recognition among peers, within your institution, and nationally...Pursue career advancement...Achieve job satisfaction.

- **AMWA ELEVATE — Certificate in Leadership Fundamentals for Women Physicians**
This coaching intensive program examines highly curated competency topics so participants are inspired to lead with intention, true to their individual leadership style and values. bit.ly/amwa-elevate
- **AMWA EVOLVE — Certificate in Leadership Elementals for Women Trainees**
This 8-month program explores challenges commonly encountered by women during residency and fellowship to foster insights that prepare each to be a more effective leader. bit.ly/amwaevolve
- **KORN FERRY U —** This 6-month course examines the six principles of leadership: Anticipating forward, Navigating, Communication, Listening, Learning to be open, and having the courage to lead in today's challenging world. Fully funded by Korn Ferry Foundation; this opportunity is free to AMWA members. bit.ly/amwa-kfu

PROFESSIONAL COACHING

AMWA also offers group and individual coaching for those interested in exploring issues shared by women in medicine be it career transitions, (in)fertility, parenting, or burnout. Check the Professional Physicians Coaching Directory to find a 1:1 coach or to join a group. bit.ly/amwacoachg

MENTORSHIP & SPONSORSHIP

Mentoring provides AMWA members with a platform to coordinate connections, foster community, and to encourage mentors and mentees to share experiences throughout their careers. Sign up as a mentor, mentee, or both! bit.ly/amwamentoring

AMWA is creating *Sponsorship Connections*. Watch for more information in *Newsflash*.

AMWA ELECTIVES

AMWA also offers a growing repertoire of on-demand courses to support professional growth and address essential topics, such as contract negotiation, financial wellness, career transitions, and work-life integration. bit.ly/elevate-el

1st Annual Healthcare Innovation Challenge



Start-up Pitch Finalists



Paula Doyle
MD, FPMRS
EndoGlow



Ruchi Gupta
MD, MPH
Yobee Care



Grace Lin
MD, MBA
*HeartScreen
Health*



Maggie Koos
MD, MS
Koos Medical Innovations



Eun Jung Choi
MD, PhD, MBA
Spave Science



Who will WIN?!

Grand Prize: \$10,000 Cash

1-Year Membership to MATTER Startup Incubator

AMWAxCEL Fellowship

Thanks to our sponsors:



MATTER

WELCOME
TO
PHILADELPHIA!



The College of Physicians of Philadelphia
BIRTHPLACE OF AMERICAN MEDICINE®

Congrats to
AMWA on a
wonderful
meeting!

TO LEARN MORE ABOUT THE
COLLEGE OF PHYSICIANS OF
PHILADELPHIA, SCAN THE
CODE TO THE RIGHT:





***Congratulations on
your appointment
as President of the
American Medical
Women's Association***

Elizabeth Garner, MD, MPH
*Chief Scientific Officer, Ferring US
President, American Medical
Women's Association*

Dear Beth,

We are inspired by your exemplary leadership, expertise and passion for advancing women's health as well as being a dedicated champion for all women in medicine.

As you step into your new role as President of the American Medical Women's Association, we know you are poised for great success leading this distinguished organization.

~ Your colleagues at Ferring US

CONGRATULATIONS

Nancy D. Spector, MD

Professor of Pediatrics; Betty A. Cohen Chair in Women's Health; Senior Vice Dean for Faculty; Executive Director, Lynn Yeakel Institute for Women's Health and Leadership; Executive Director, Executive Leadership in Academic Medicine® and Executive Leadership in Health Care programs 2023.



2023 ELIZABETH BLACKWELL AWARDEE

We celebrate Dr. Nancy Spector and the important work she has done to advance gender equity in medicine in her role as Executive Director of Executive Leadership in Academic Medicine® (ELAM). ELAM is in its 28th year and has close to 1,300 graduates who are leaders in academic medicine, dentistry, public health and pharmacy.



DREXEL UNIVERSITY

Executive Leadership in
Academic Medicine

College of Medicine



<https://www.linkedin.com/company/executive-leadership-in-academic-medicine/>



drexel.edu/elam



elam@drexel.edu



[@elamprogram](https://twitter.com/elamprogram)

Congratulations Theresa “Nanny” Rohr-Kirchgraber,
MD, FACP, FAMWA

As you complete your 2nd term as President of the
American Medical Women’s Association



Proud to have been your “First Gentleman” for two terms!



Paul Kirchgraber, MD, MBA



ACP Celebrates the **Leadership and Impact** of Women in Medicine

ACP congratulates and proudly celebrates **Susan T. Hingle, MD, MACP, FRCP**, Chair Emeritus, ACP Board of Regents, on becoming President-Elect of AMWA.



[ACPOnline.org/IMPhysician](https://www.acponline.org/IMPhysician)



Congratulations!

Dr. Nancy Spector
2023 AMWA Blackwell Award



*We are PROUD
of you!*



Dr. Betty Pace

*Francis J. Tedesco Chair of Pediatric Hematology/Oncology
at the Medical College of Georgia at Augusta University.*

You are a longtime physician to children with sickle cell disease, and a scientist who has spent decades pursuing more insight and answers.

You are a mentor and inspiration to dozens of junior medical school faculty who hope to make that kind of impact with their lives and careers.

You are the director of PRIDE, funded by the National Heart, Lung and Blood Institute, to help ensure that the next generation of innovators represents us all.

You are the American Medical Women's Association 2023 Woman in Science Award Recipient.

The Medical College of Georgia, Georgia's only public medical school, thanks you Dr. Pace for your commitment to children, to science and to society.



AUGUSTA UNIVERSITY

**MEDICAL COLLEGE
OF GEORGIA**



WOMEN IN MEDICINE
LEGACY FOUNDATION

Our Past Shapes Our Future

CELEBRATING 25 YEARS OF IMPACT

Proud Partners of AMWA



There can be no purposeful future without the perspective of history. We maintain the path behind in order to inspire those forging ahead.

Women in Medicine Legacy Foundation

Preserving and promoting our history for 25 years

- Honoring outstanding physicians and scientists with the Alma Dea Morani Award
- Telling the stories of medical pioneers through oral history
- Making the legacies of women in medicine visible and discoverable through The Hub
- Awarding processing grants to provide the resources needed to get these important collections processed and made accessible
- Supporting scholars, and more



Sign up for our newsletter to learn more.

Women in Medicine Legacy Foundation
P.O. Box 925
Voorhees, NJ 08043
www.wimlf.org | admin@wimlf.org



WOMAN IN SCIENCE AWARD

Betty S. Pace, MD

Congratulations to Dr. Pace on this outstanding achievement and your many exceptional contributions to medical science!



**GEORGIA
CANCER CENTER**
AUGUSTA UNIVERSITY



*Congratulations
Katharine Ross Jeffreys
on receiving the
Camille Mermod Award*



Congratulations to Dr. CS Tse



On receiving the 2023 AMWA Early Career Women in Science Award!!

We thank you for your tireless efforts committed to the study of inflammatory bowel diseases, specifically Crohn's disease and ulcerative colitis. Your continued dedication to medicine including areas intersecting with healthcare delivery, healthcare utilization, health disparities, interdisciplinary care, and psychosocial health do not go unnoticed. Thank you for your leadership and unwavering commitment to supporting patients.

With appreciation,

Penn Medicine, Division of Gastroenterology and Hepatology
Penn Inflammatory Bowel Disease Program



Lunar Doula Collective

providing compassionate support, free of charge, to individuals experiencing pregnancy loss or termination

We are
recruiting
doulas &
leadership!



lunardoulacollective@gmail.com

Congratulations Dr. Satty Gill Keswani



It is with great pleasure that we bring you this goodwill message as Executive members of the Medical Women's International Association (MWIA) as we felicitate with Dr. Satty Gill Keswani as she receives the Esther Pohl Lovejoy award.

President : Dr. Eleanor Nwadinobi
President Elect : Dr. Amany Asfour
Secretary : General Dr. Mariam Jashi
Treasurer : Dr. Eliza Lo Chin
RVP Northern Europe: Dr. Elizabeth Lichtenstein
RVP Central Europe : Dr. Edith Schratzberger
RVP Southern Europe: Dr. Concetta Laurenttaci
RVP North America: Dr. Connie Newman
RVP Latin America: Dr. Nelci Zannon Collange
RVP Central Asia: Dr. Darunee Bhuddari
RVP Near East and Africa: Dr. Claribel Abam
RVP Western Pacific: Dr. Bong Ok Kim

RAFFLES FOR EDUCATION!

Made up of pre-medical and medical students, residents, attending physicians, and research scientists, the **Sex and Gender Health Collaborative** of AMWA brings together a national, multidisciplinary team of learners and educators passionate about advancing the awareness and implementation of sex and gender in medical education.



During AMWA's 108th national conference, our team will host a fundraiser with **over \$6,625 worth in prizes!**

Visit our table to learn more about our initiative and enter to win a prize while supporting our cause!



AMWA

2022 Annual Report

Read it at:
bit.ly/amwa2022rp

**SUPPORTING
WOMEN
IN MEDICINE
SINCE 1915**

American Medical Women's Association



Women in Medicine Reception

March 24, 2023

Held at the

The College of Physicians of Philadelphia

during the

American Medical Women's Association Annual Meeting

& Medical Women's International Association

North American Congress

Thanks to our Presenting Sponsors:



The College of Physicians of Philadelphia
BIRTHPLACE OF AMERICAN MEDICINE®



DREXEL UNIVERSITY
Executive Leadership in
Academic Medicine
Legacy Medicine



awhp
Alliance for Women's
Health & Prevention



WOMEN IN MEDICINE
LEGACY FOUNDATION
Our Past Shapes Our Future

and Friend Sponsor, The Philadelphia County Medical Society

*Congratulations to the
Women in Medicine Legacy Foundation
on their 25th Anniversary*



WOMEN IN MEDICINE
LEGACY FOUNDATION

Our Past Shapes Our Future

In 2022, AMWA partnered with the
WIMLF on a new lectureship --

**Transforming Healthcare:
Celebrating Women in Medicine**

bit.ly/amwawim



PHYSICIAN FERTILITY SUMMIT

IN HONOR OF WORLD INFERTILITY
AWARENESS MONTH

June 17th, 2023

12 - 4:00 PM EST

Virtual

Register at
bit.ly/amwapfs

Morgan Stanley

PRIVATE WEALTH MANAGEMENT

Shawn Fowler & Maxwell Bull



Congratulations to **Ted M. Johnson, II, MD, MPH**

Chair, Department of Family and Preventive Medicine
Paul W. Seavey Chair & Director, Division of General Internal Medicine
Emory University

Recipient of the American Medical Women's Association
2023 Larry Zaroff Man of Good Conscience Award

We honor your commitment as a champion and supporter of women in medicine.



From your friends at
American Geriatrics Society
Health in Aging Foundation



**The Department of Obstetrics and Gynecology
of Cooperman Barnabas Medical Center
is proud to recognize Dr. Satty Gill Keswani
on her dedication to the promotion of international relations and
improvement in international health.**

**We congratulate her on receiving
the 2023 Esther Pohl Lovejoy Award.**

Richard C. Miller, MD, FACOG
Chairman

*AMWA past presidents wish
Dr. Elizabeth Garner much success as
she begins her presidency!*



AMWA

“To acknowledge our ancestors means we are aware that we did not make ourselves, that the line stretches all the way back...” *--Alice Walker*



DREXEL UNIVERSITY

College of
Medicine

CONGRATULATIONS

Nancy D. Spector, MD

Professor of Pediatrics; Betty A. Cohen Chair in Women's Health; Senior Vice Dean for Faculty; Executive Director, Lynn Yeakel Institute for Women's Health and Leadership; Executive Director, Executive Leadership in Academic Medicine® and Executive Leadership in Health Care programs



2023 Elizabeth Blackwell Awardee

Entering our third decade as Drexel University College of Medicine, we are proud of our heritage as a college of opportunity, tracing our roots from two institutions that embraced diversity: Hahnemann Medical College and the Woman's Medical College of Pennsylvania – the first degree-granting medical school in the world for women.



Alliance for Women's
Health & Prevention

Women Deserve Access to Better Preventive Care!

The Alliance for Women's Health and Prevention (AWHP) is a non-profit women's health advocacy organization working to ensure that all women and girls have access to high-quality, affordable preventive care.

Research highlights the need to raise awareness and advocate for women's preventive health.

Check out the new survey from AWHP and Ipsos North America highlighting barriers to care and key disparities in women's experiences accessing preventive healthcare:

womenshealthandprevention.org/ipsos-survey-press-release/

AWHP engages and advocates for prevention-focused policy issues.

- Addressing Upstream Social and Environmental Factors
- Advancing Access to Care and Treatment
- Promoting Early Detection and Diagnosis
- Advancing Vaccine Access and Affordability



Get In Touch

womenshealthandprevention.org

  @AWHPOrg



Millicent Gorham,
CEO, Board Chair

 @MillieGorham