



American Medical Women's Association
The Vision and Voice of Women in Medicine since 1915

Women in Medicine: Successfully Facing Future Challenges and Advances

99th Anniversary Meeting of the American Medical Women's Association

March 13 – 16, 2014
The Ritz-Carlton
Washington, DC

EDUCATION AND MEETING PROGRAM BOOK



Jointly Sponsored by Indiana University School of Medicine and the American Medical Women's Association

THE WHITE HOUSE
WASHINGTON

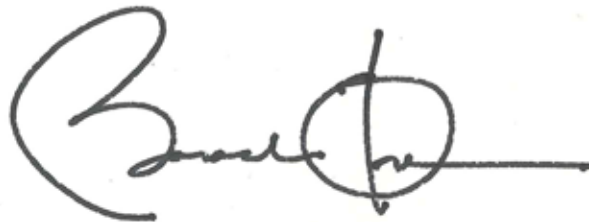
February 25, 2014

I send greetings to all those attending the 99th Anniversary Meeting of the American Medical Women's Association (AMWA) Women in Medicine: Successfully Facing Future Challenges and Advances.

When women succeed, America succeeds. And all women deserve an equal chance to reach their full potential. Whether striving to excel in their profession or accessing quality, affordable health care, women should have the same opportunities as men to be their best selves.

For 99 years, AMWA has advocated for women in medicine. By uniting professionals to advance women's health and lifting up women pursuing medical careers, organizations like AMWA fight for gender equality throughout our health care system. I applaud your commitment to mentoring the next generation of women in health care, raising awareness about human trafficking, and tackling urgent health challenges. Bolstered by the work of groups like yours, the Affordable Care Act prevents insurance companies from charging a patient more just for being a woman and First Lady Michelle Obama's *Let's Move!* initiative is helping bring down the rates of childhood obesity for the first time in 30 years.

Congratulations on 99 years of service. I am deeply grateful to all those dedicated to expanding opportunity and improving women's health. I wish you all the best for a rewarding, productive conference.

A handwritten signature in black ink, appearing to be "Barack Obama", with a large, stylized "B" and a circular flourish at the end.



Welcome ~

99th Anniversary Meeting American Medical Women's Association

March 14, 2014



As Mayor of the District of Columbia, it is my pleasure to welcome the members of the American Medical Women's Association on your 99th Anniversary.



This meeting's theme; "*Women in Medicine: Successfully Facing Future Challenges and Advances*", will have a productive and meaningful lectures filled with networking and mentoring opportunities. This annual event serves as a conduit to promote educational sessions and interactive classes as specialized development for medical professionals. As you reflect on your accomplishments, discuss new ideas and share best practices, please enjoy the monuments, museums, restaurants and diverse neighborhoods that help enhance this city – our nation's capital.

On behalf of the District of Columbia, you have my best wishes for a dynamic and memorable event.



A handwritten signature in black ink that reads "Vincent C. Gray".

Vincent C. Gray
Mayor, District of Columbia

Letter from AMWA President 2013–2014

President's Message



As the 93rd President of the American Medical Women's Association, this has been a very exciting year for AMWA. The hard work and dedication of both the medical students, residents and physicians has been inspiring! Our initiatives have included breast cancer education, a new AMWA website, education about the effects of alcoholism, work against sex trafficking, resources for women physicians who are in personal or professional crisis, and the addition of a new diversity task force.

AMWA recently invited me back to my medical school after almost twenty years to give their keynote address about an academic career and mentorship. My medical school teacher and mentor had been hospitalized and asked his nurse if he could leave his hospital bed and attend my lecture. My teacher was the first to arrive. It reminded me how powerful and important these mentoring relationships are and how they are everlasting. As president of AMWA, I have had a phenomenal year and met many dynamic students and found some very special mentors.

Our upcoming annual meeting Women in Medicine: Successfully Facing Future Challenges and Advances guarantees to be an exciting and informative conference. It includes an advocacy day on Capital Hill, a student symposium and 24 nationally renowned speakers addressing a wide variety of topics in women's health, the future of affordable care and technology in medicine. A Saturday night Black Tie Gala at the National Museum of Women in the Arts to honor Arianna Huffington will conclude the event and mark the beginning of our celebratory 99th Anniversary year.

It was my honor being your 93rd AMWA President!

Eleni Tousimis, MD, FACS
President, American Medical Women's Association, 2013-2014

Dr. Eleni Tousimis is a board certified General Surgeon who specializes in breast cancer surgery. She recently joined Medstar Georgetown University Hospital, Lombardi Comprehensive Cancer Center as the Chief of the Division of Breast Surgery and Director of the Ourisman Breast Center at the Lombardi Cancer Center in Washington D.C. Dr. Tousimis attended Dartmouth and Mount Holyoke College where she graduated cum laude. She then received her medical degree from Albany Medical College. Following her breast surgery fellowship training at Memorial Sloan-Kettering Cancer Center in 2001, she completed additional specialty training in minimally invasive surgery of the breast at the European Institute of Oncology in Milan, Italy. Dr. Tousimis was previously Associate Professor of Clinical Surgery at the Weill Cornell Medical College, New York Presbyterian

Hospital for the last 9 years and served as Associate Program Director of Surgical Education. She has been recognized for her pursuit of new initiatives in breast cancer management, including nipple sparing mastectomy, partial breast radiation and new anesthetic techniques for breast surgery. As a well-respected clinician, researcher and teacher, Dr. Tousimis has received numerous awards and holds leadership positions in several professional societies and acts as section editor of the Aesthetic Plastic Surgery Journal. She has been recognized as a Castle Connolly's Top Doctors, Top Surgeons and Best Doctors in 2009–2012. She received an Achievement Award from the City of New York for her surgical skill, compassion and service to the people of New York.

Letter from AMWA President 2014–2015



Dear cherished members, leaders and colleagues,

My term of office as your incoming AMWA President coincides with a remarkable, historic time in our history, we are soon turning 100 years old! Born from the drive, dream and diligence of our founder, Dr. Bertha van Hoosen we have worked together to keep that original fabric of empowerment, opportunity, equity and professional fortitude strongly woven. With our collective efforts, we will rise to every challenge, overcome any obstacles and succeed on every stratum of our involvement with the right mind-set. In the words of Eleanor Roosevelt, “The future belongs to those who believe in the beauty of their dreams.” As your 2014-2015 President, I will stand by your side as we move forward with vim and vigor with much passion as we pursue our organizational goals. As women and professionals of today, we have a duty to uphold and perpetuate a strong, balanced, professional foundation for the present and future generations

of AMWA members. Stand beside me as we champion our efforts and as we herald in change that will strengthen our voice, vision, depth and breath as an organization. This year my personal passion as a practicing Internist is to promote health, wellness and prevention of disease. We can live successfully as professionals of today while harmonizing every aspect of living and life. This same balance and harmony is necessary for the success of AMWA. AMWA brings us all together, unifying our approach as we each extract vital lessons necessary for personal and professional success. Together we will synergize our efforts and lead AMWA to new heights. I have come full circle with my involvement in AMWA. Starting as a student member many years ago and now elected as your incoming President as a seasoned clinician and practice owner. It is my honor and privilege to lead us as we experience transformative growth. I would like to thank my fellow leaders, colleagues, members, my loving family, friends and all in support of our mission and vision. Our founders blazed a trail for us almost 100 years ago and it is up to each of us to continue to forge forward as we break our proverbial glass ceiling and continue to refine and redefine equal opportunities and empowerment for all.

With deepest sincerity,
Farzanna S. Haffizulla MD FACP

Dr. Farzanna Sherene Haffizulla graduated summa cum laude and with University Honors in Molecular Biology and Microbiology from the University of Central Florida. She completed medical school at The University of Miami Miller School of Medicine. Her residency training was at the Cleveland Clinic Florida and at the Cleveland Clinic Foundation in Ohio and she is Board Certified in Internal Medicine. She founded and opened her own concierge, hybrid medical practice in 2008 after practicing in a traditional setting for 5 years. Her innovative, creative approach to medical practice allows her to efficiently fuse traditional clinical practice with technology. Dr. Haffizulla was recently featured in “Practice Link” magazine’s Winter 2014 edition featuring her medical practice and work/life balance techniques.

Dr. Haffizulla has earned several awards including a Quality First Award from the Florida Healthcare Coalition, a leading physician of the world award from The International Association of Healthcare Professionals and was selected as an outstanding woman in healthcare by the International Women’s Leadership Association. She is a Fellow of the American College of Physicians, she teaches Honors Organic Chemistry to the pre-med seniors at American Heritage and also served as the Medical Director and advisor for several health care companies. She is an Affiliate Assistant Professor of Biomedical Science at the Charles E. Schmidt College of Medicine at

Florida Atlantic University and is a Voluntary Assistant Professor of Medicine at the University of Miami. She is also a primary scientific board member on an institutional review board for clinical research. Dr. Haffizulla served as the President of the South Florida chapter of AMWA and she founded national AMWA’s fellowship program and the Preventive Medicine Task Force. She has also served as the fundraising co-chair and as a member of governance, finance, membership and global outreach committees.

Dr. Haffizulla is the host, anchor and medical correspondent for the nationally recognized show, Mission Critical Health and is a physician ambassador for the Broward County Department of Health. She is also a nationally recognized speaker and expert on work/life balance and published “Harmony of the Spheres: Career, Family and Community” in 2011. She also founded and runs a work/life balance site BusyMomMD.com. She authored and nationally published several articles to parenting and professional communities and is working on her second book which outlines strategies for achieving personal and professional success. She was a guest on several radio shows and has been invited as keynote speaker at several local and national events. She lives in South Florida with her husband Dr. Jason Haffizulla and her four children Zarina, Anisa, Nadia and Adam.

Letter from AMWA Resident President 2013–2014



You're on your first shift for night float, and you're called into a patient's room. He's "crashing": his vital signs even you, the new intern, quickly recognize are concerning. The respiratory therapist and nurse announce to the family: "Oh, good. Here's the doctor." Hnh? You look over your shoulder. Where's the doctor? What? Oh, crap! Me?! I'm the doctor.

This year – and every year – you will need help. You will need physicians more senior and more knowledgeable than yourself to whom you can turn with questions about medicine, patient care, slip-ups, exhaustion, teaching, board exams, scheduling, diet/exercise, weight gain/loss, illness, career, advocacy, advancement, salary, negotiating contracts, lawsuits, and the list goes on.

You will need support.

We will be there for you. This is our promise. This is not the promise of an organization or a corporation or an institution. This is the promise of women just like yourself who once struggled or are struggling to balance life with this very demanding career.

In return, we ask for your promise: To do your best. To persevere, to enjoy, and even to thrive. To mentor those who come after you – be they premed students, medical students, residents, or junior faculty.

Because the time will come – and quickly – when you're called to a patient's room and the nurse announces, "Oh, good. Here's the doctor." And you think, yes, here I am.

Welcome to the AMWA Residency Division.



Kanani Titchen, MD
AMWA RD, President 2013-2014
President, AMWA National Resident Division 2013-2014
Pediatrics Resident, Jefferson/duPont-Nemours Hospital for Children

Originally from Hawaii, Kanani now lives with her husband Lou in Philadelphia. Kanani previously has served as President of Jefferson Medical College's AMWA chapter, as National AMWA Region 3 Director (for PA, DE, MD, VA, DC), and as the National Resident Division Treasurer and President-Elect.

Kanani double-majored at Tufts University in Psychology and Music and promptly pursued her interests in music and theater, earning her living as a professional actress. In 2003, Kanani returned to science at the Population Council, working in microbicide development. A premed-postbac certificate at Columbia University in 2006 led to clinical research in osteoporosis and menopause and then to medical school. While at Jefferson, Kanani continued to research the development of biomarkers for breast and ovarian

cancer. She is currently a Pediatrics Resident at Jefferson/A.I. duPont Hospital for Children and is applying for fellowship in Adolescent Medicine this summer.

Kanani is an avid traveler and athlete and is active in public health and advocacy. Her independent study of human sex trafficking over the past four years led to research of physician knowledge of child sex trafficking and to the current AMWA human sex trafficking initiative. For more information about Kanani, feel free to check out her profile on LinkedIn or email her at ktitchen@amwa-resident.org. For more information about Kanani's and AMWA's child sex trafficking initiative, go to <http://www.amwa-doc.org/our-work/initiatives/human-trafficking/>.

Letter from AMWA Resident President 2014–2015



Dear Distinguished AMWA Members,

First let me start off by recognizing all of the leaders that have come before and set the standards for which we strive to achieve. The American Medical Women's Association has amongst its members the brightest and most distinguished leaders of the medical community. Since 1915 they have dedicated voluntary time towards enhancing healthcare for all women and supporting the advancement of women in medicine. In March 2010, AMWA established the Residency Division to serve and represent the unique challenges that this group of new female physicians faces.

One of the strongest links of this organization is the ties that we have in the medical community as a multidisciplinary team. AMWA is unique in that our members are considered specialists in all fields of medicine. This supplies the advantage of expertise outside the fields in which we spend most of our time. Based on this AMWA has the potential to have a strong political influence on legislation in support of women. This year the Residency Division plans to take hold of this potential in pursuit of implementing change. As the upcoming generation of physicians we have the responsibility to influence change that will benefit the patients that we see, and early in our career is the best time to become involved.

With this in mind this year we will also continue to support the advocacy efforts of the former residency president and continue to enhance awareness about the atrocities of Human Trafficking. We will continue to provide education for all members on the warning signs to identify persons at risk and provide resources for these providers.

Finally, the cornerstone of any group of strong influential people is the roots from which they arise. This foundation can help to shape the future. Women in medicine have faced countless struggles to excel and achieve the positions that they have achieved, and their journey offers lessons that can only be learned with time. Therefore this year the AMWA residency division will strive to enhance the mentorship program that was one of the first endeavors undertaken by the division. Realizing that resident, student and attending members can benefit acting as mentors and mentees we plan to enhance bonds through the Charlotte Edwards Maguire, MD Mentor Register.

This year is an exciting year for the residency division and as a group we are stronger and more united than ever. The possibilities for growth are endless.

Sincerely,

Tara A. Renna, MD
President Elect, AMWA Residency Division
PGY2 – Department of Obstetrics and Gynecology Albany Medical Center

Tara Renna is currently a second year resident in Obstetrics and Gynecology at Albany Medical Center in Albany NY. She earned a MD from Albany Medical School in May of 2012 and graduated Magna Cum Laude from Siena College in 2008. During her time as a student Tara has had a continued commitment to women's health. This included being the first honoree to receive the Sr. Thea Bowman Social Justice Award. Her future goals include pursuing a fellowship in Maternal Fetal Medicine and is currently involved in research involving Human Papillomavirus and its association with preterm delivery.

During her involvement with AMWA she has acted in various positions. She served as President of the Albany Chapter in the first two years of medical

school and helped to institute an annual mentor dinner as well as breast cancer fundraisers and awareness about domestic violence. She has also held positions in the Residency Division as Residency Liaison, Treasurer, President-Elect, and this year will serve as Residency Division President.

As an AMWA member, Tara hopes to increase participation and involvement within the Residency Division. Specifically, she hopes to increase collaboration with the medical student division, strengthen the Charlotte Edwards Maguire Mentor Program, encourage resident participation in political change, and support the current President's initiative to combat the global trafficking of women and children.

Letter from AMWA Student President 2013–2014



Colleagues, Mentors, and Friends,

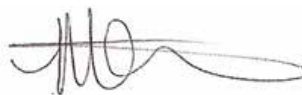
What can I say? After a remarkable year of President-Elect with a wonderful leadership team, impressive strides for AMWA, and a beautiful meeting in New York - I was excited, humbled, and motivated to make this year bigger and better for the Student Division and AMWA overall. I could not be more proud or — better yet — more AMAZED by the work and progress we have had this year and now EXCITED to celebrate this progress with you all at the meeting.

We owe this year's success in the Student Division to each of you — for your dedication, for joining this organization, and for not being complacent, for striving to make AMWA what she is and what she is heading toward.

We have received record awards applications this year, both for individuals and for branches; we have created new branches and re-invigorated old branches; we have started an Undergraduate Division; we have become involved in the AMWA committees; we have advocated for ourselves and for others; we have revived the AMWA essay contest in honor of the revolutionary Linda Brodsky, MD who gave of herself to improve our futures; we have THRIVED.

YOU are amazing — my colleagues this year are inspiring! I cannot wait to continue working with you all in the Student Division, Resident Division, and beyond. This Centennial year is sure to be nothing short of groundbreaking. AMWA's future is bright! Join me in learning throughout the meeting, celebrating this year's success, and reinvigorating ourselves so as to continue to give to AMWA and help her grow!

Warm Regards,



Marissa Joelle Orenstein

Marissa Orenstein is currently a fourth year medical student at the University of Miami Miller School of Medicine preparing to match into a Pediatric Residency. As a graduate of the University of Miami with majors in Neuroscience and Spanish, she is extremely proud to be on the road to becoming a "Double 'Cane"! Marissa has served her university in many leadership capacities including Co-Director of the UM Department of Community Service (DOCS) program which is an entirely student run endeavor to provide free health services to local underserved communities through 9 annual health fairs and 2 weekly clinics. She also represents her school as an OSR Representative to the AAMC and serves as the Student Government Class of 2014 Vice President. Marissa is a proud member of AOA, Phi Beta Kappa and the Iron Arrow Honor Society.

Marissa became involved in AMWA as a first year student participating in the National Conference in Washington, DC. Inspired by the amazing student and physician leaders she met, she went on to serve

AMWA as an assistant to the student conference planning committee in addition to serving her local chapter as Vice President and then President. Throughout her time with the Student Division, Marissa has garnered additional support for AMWA through increased member benefits, overall membership expansion, undergraduate branch expansion, and increasing student presence throughout AMWA including roles as Committee Chairs. Marissa is very passionate about mentorship in every aspect of life and is proud to be part of AMWA as it provides such incredible opportunities for women to become leaders in medicine. She also serves as the Co-Chair of the Membership Committee and is excited to take on the new role of Recruitment Chair for the Residency Division. She will continue to work to recruit new members and keep members involved and dedicated to the AMWA mission. Feel free to contact her at any time with suggestions or ideas for AMWA.

Letter from AMWA Student President 2014–2015



Hello and welcome to AMWA's 99th Annual Meeting! I am honored to welcome you to Washington D.C. this year to promote our theme of facing future challenges and advances for women in medicine.

Throughout your medical school education, you will inevitably have a constant stream of challenges thrown your way. It is my goal that AMWA can provide you the support that you need to successfully advance past these hurdles. Is there a women's health issue that you know you could help fix? Join the AMWA team to create and spearhead a nationwide advocacy initiative. Mentally stuck on boards studying? Let us give you advice on resources to use, and then provide you with discounts on those tools. Need a hand battling the wards? Read up on our many guides on how to tackle medical school year by year. Interested in traveling abroad and confronting some of the world's toughest issues for women in need? Become an AMWA Global Health Fellow and be supported in your quest to do good.

The Annual Meeting itself is a fantastic way to advance your career in medicine by investing in your own personal growth. Take this meeting as an opportunity to widen your professional network with countless women who are committed to your success. Use this common space to promote your colleagues and to learn from each others' research projects. Take this time to be courageous and to go outside of your usual comfort zone. This is your chance to grow broader than the confines of your individual medical education, and I can promise that the relationships you make here will last well beyond your four years of medical school.

The friends and colleagues that I have built through AMWA have made some of the most enriching contributions to my time as a medical student. My hope is that this meeting will leave you with a similar sense of purpose and energy that AMWA has always imbued in me.

Have a wonderful weekend and welcome again to AMWA's 99th Annual Meeting!

A handwritten signature in black ink, appearing to read 'Jackie Wong'.

Jackie Wong
National Student President-Elect

Jackie Wong is currently an MSIII at Northwestern University, Feinberg School of Medicine. She graduated with distinction and honors from University of Toronto in 2011 with a Specialist in Health and Disease. She previously served two terms as Co-Editor-In-Chief of the global health magazine, Juxtaposition. She also Co-Founded and served as Co-President for Women Out Loud, a student group committed to the awareness of women and gender issues.

Jackie previously served as Co-President for her Northwestern AMWA chapter and is honored to soon begin a new year as the National Student President for AMWA. She has been a proud proponent of advocacy for women in medicine and the promotion of women's reproductive rights. Her past projects have focused on increasing exposure to less typically women-

dominated specialties within medicine and on mentoring students to pursue medical careers. Her goals for this year on the AMWA board are to enhance discourse and collaboration between local chapters and to create an active network of mentorship between AMWA physicians and students nationwide. She would like to encourage all women medical students to join this team and to believe in the importance and strength of their ideas.

Outside of AMWA, Jackie spends her time as a researcher in the Division of Gynecologic Oncology at Northwestern. Her current research involves assessing women's reproductive health outcomes after chemotherapy for gestational trophoblastic neoplasia. Jackie is also involved in establishing a Chicago-wide AMWA Consortium to promote community leadership and networking for women in medicine.

Conference Agenda

Wednesday, March 12, 2014

6:00 pm

Welcome

Eleni Tousimis, MD, FACS

President, American Medical Women's Association

Georgetown University Hotel
& Conference Center

Advocacy Day Training (non-CME)

Representative Erik Paulsen (Rep-Minnesota-3rd) (invited)

Member of Congress

Martha Nolan, JD

Vice President of Public Policy

Society for Women's Health Research

Leslie Ritter, MA

Director of Government Affairs

Society for Women's Health Research

Roberta E. Gebhard, DO

Secretary and Chair, AMWA Gender Equity Task Force

American Medical Women's Association

Chair, Department of Family Medicine, WCA Hospital

Norma Jo Waxman, MD

Associate Professor of Family and Community Medicine

Faculty, The Bixby Center for Global and Reproductive Health

University of California San Francisco

Thursday, March 13, 2014

7:30 am

Advocacy Day on the Hill (non-CME)

Rayburn House Office
Building, Cafeteria

Martha Nolan, JD

Vice President of Public Policy

Society for Women's Health Research

Leslie Ritter, MA

Director of Government Affairs

Society for Women's Health Research

Roberta E. Gebhard, DO

Secretary and Chair, AMWA Gender Equity Task Force

American Medical Women's Association

Chair, Department of Family Medicine, WCA Hospital

Conference Agenda

Friday, March 14, 2014		
8:00 am	Registration	The Ritz-Carlton, Washington DC
9:00 am	Committee Meetings Capitol Hill Tours	TBA U.S. Capitol Visitor Center
10:00 am	AMWA Board Meeting	Board Room
12:45 pm	Welcome <i>Eleni Tousimis, MD, FACS</i> President, American Medical Women's Association	The Ritz-Carlton Ballroom
1:00 pm	Dr. Linda Brodsky Memorial Lecture Death and Sex: Perspectives on End-of-Life <i>Stephanie Pincus, MD, MBA</i> Scholar in Residence, Institute of Medicine	
1:30 pm	Can America Achieve Affordable Care? <i>William A. Haseltine, PhD</i> Chairman and President, ACCESS Health International, Inc	
2:00 pm	Staring Down Cancer: 11 Years with Metastatic Breast Cancer <i>Noreen Fraser</i> Founder and CEO, Noreen Fraser Foundation	
2:30 pm	Break	
2:45 pm	Introduction to Women's Health <i>Vivian W. Pinn, MD</i> Senior Scientist Emerita, Fogarty International Center, NIH Former Director (Retired), Office of Research on Women's Health, NIH	
3:00 pm	The Watson Project: Memorial Sloan Kettering Collaborates with the IBM Super Computer <i>Mark G. Kris, MD</i> The William and Joy Ruane Chair in Thoracic Oncology Attending Physician, Thoracic Oncology Service Memorial Sloan Kettering Cancer Center Professor of Medicine, Weill Cornell Medical College	
3:30 pm	Advances in Breast Cancer Treatment <i>Alexandra S. Heerdt, MD, MPH</i> Professor of Surgery, Memorial Sloan Kettering Cancer Center	
4:15 pm	Q & A	
4:30 pm	The Value of Nature <i>Mark R. Tercek, MBA</i> President and CEO, The Nature Conservancy	

Conference Agenda

5:00 pm	Adjourn Committee Meetings	Various Rooms
5:30 pm - 6:30pm	Friday Evening Reception	Marvin Center Continental Ballroom George Washington University
7:00 pm	Friday Evening Symposium (non-CME)	The Ritz-Carlton Ballroom
7:00 pm	Ethanol and the Heart - The Plot Thickens <i>Daria Mochly-Rosen, PhD</i> George D. Smith Professor of Translational Medicine Professor, Chemical and Systems Biology, Director of SPARK Stanford University	The Ritz-Carlton Ballroom
7:25 pm	Preventing Alcohol Problems Throughout the Lifespan <i>Peggy M. Murray, PhD</i> Director, Global Alcohol Research Program National Institute on Alcohol Abuse and Alcoholism, NIH	
8:00 pm	The Chilly Climate for Women: How Women Are Often Treated Differently in Subtle Ways and Nobody Notices <i>Bernice Sandler, EdD</i> Senior Scholar, Women's Research and Education Institute "The Godmother of Title IX"	
8:45 pm	Student Elections Faculty Advisor Session	The Ritz-Carlton Ballroom TBA
Saturday, March 15, 2014		
7:00 am	Poster Set-up	The Ritz-Carlton Plaza II
7:30 am	Continental Breakfast	
7:30 am	Poster Session and Judging	Plaza II
8:00 am	Exhibit Hall Opens	Plaza I
8:30 am	HPV Vaccination and Our Adolescent Population <i>Richard Schlegel, MD, PhD</i> Professor and Chair, Department of Pathology	The Ritz-Carlton Ballroom
9:00 am	Prepare to Negotiate Successfully with Message-Mapping <i>Kevin Grigsby, DSW</i> Senior Director of Member Organizational Development Association of American Medical Colleges	

Conference Agenda

9:30 am	Resident Tea	Meet at Registration Desk
9:45 am	Break	
10:15 am	The Decade of the Brain <i>Story Landis, PhD</i> Director, National Institute for Neurological Disorders and Stroke (NINDS) National Institutes of Health (NIH)	The Ritz-Carlton Ballroom
10:45 am	How Technology Is Rapidly Changing the Way We Treat Patients <i>Danielle Ofri, MD, PhD</i> Associate Professor, New York University School of Medicine Editor-in-Chief, Bellevue Literary Review	The Ritz-Carlton Ballroom
11:15 am	Taking the Helm: How Women Can Shape the Future of Medicine <i>Ardis Dee Hoven, MD</i> President, American Medical Association	
11:45 am	Q & A	
12:00 pm	AMWA Annual Awards Luncheon	The Ritz-Carlton Ballroom
1:30 pm	Gender Differences in Vascular Disease <i>Julie Ann Freischlag, MD</i> Vice Chancellor for Human Health Services Dean of the School of Medicine UC Davis, School of Medicine	
2:00 pm	Sex and Gender Considerations in Cardiovascular Disease <i>Sharonne N. Hayes, MD</i> Professor of Medicine and Cardiovascular Diseases Founder, Women's Heart Clinic Mayo Clinic, Rochester, MN	
2:30 pm	Break Student/Resident Mixer	Plaza II
3:00 pm	Ending the AIDS Pandemic: From Scientific Advances to Public Health Implementation <i>Anthony S. Fauci, MD</i> Director, National Institute of Allergy and Infectious Diseases (NIAID) National Institutes of Health (NIH)	The Ritz-Carlton Ballroom
3:30 pm	THRIVE: The Third Metric to Redefining Success and Creating a Life of Well-Being, Wisdom, and Wonder (non-CME) <i>Arianna Huffington</i> Chair, President, and Editor-in-Chief, Huffington Post Media Group	

Conference Agenda

4:00 pm	Adjourn	
4:00 pm	Poster Session AMWA Networking Alliance Meeting Resident Division Leadership Transition Meeting Student Division Leadership Transition Meeting Committee Meetings	Plaza II Washington The Ritz-Carlton Ballroom The Ritz-Carlton Ballroom Various Rooms
5:00 pm	Exhibit Hall Closes	Plaza I
7:00 pm	AMWA's 99th Anniversary Gala Cocktails	National Museum of Women in the Arts, Gallery Floor
8:00 pm	Black Tie Dinner	Main Floor / Mezzanine
9:00 pm	Presidential Award Presentation: Arianna Huffington	
9:30 pm - 12:00 am	Dancing	
Sunday, March 16, 2014		
7:30 am	Continental Breakfast	The Ritz-Carlton Washington DC
8:00 am	Exhibit Hall Opens	Plaza I
8:30 am	Poster Award Presentations	The Ritz-Carlton Ballroom
	Personal Development & Professionalism <i>Liise-anne Pirofski, MD</i> Mitrani Professor of Biomedical Research Professor of Medicine, Microbiology and Immunology Chief, Division of Infectious Diseases Albert Einstein College of Medicine and Montefiore Medical Center	
	The Healthy Mentoring Relationship <i>Amy S. Paller, MD</i> Walter J. Hamlin Professor and Chair Department of Dermatology Director, Skin Disease Research Center Northwestern University Feinberg Medical School	
	Small Group Mentoring and Networking	
10:30 am	Break	

Conference Agenda

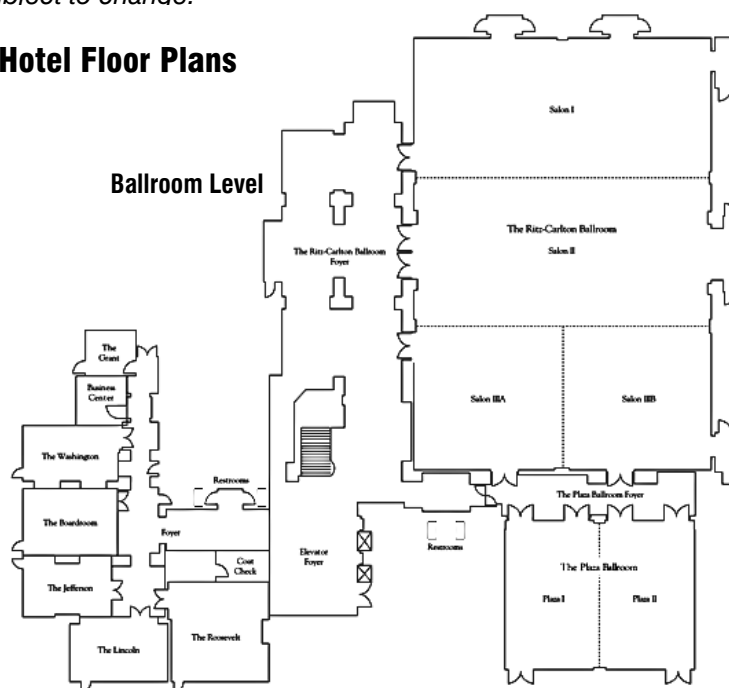
10:45 am	Food Insecurity and Global Women's Health <i>Louise Ivers, MD, MPH, DTM&H</i> Senior Health and Policy Advisor for Partners In Health (PIH) Associate Professor of Global Health and Social Medicine, Harvard Medical School	
11:15 am	The 30 Minute MBA for Physicians <i>Joseph Mortati, MBA</i> Adjunct Professor, The Johns Hopkins Carey Business School	
11:45 am	Q & A	
12:00 pm - 12:30 pm	Meeting of the Members Overview of AMWA Programs and Initiatives Highlights of AMWA's Achievements Over the Past Year	The Ritz-Carlton Ballroom
12:30 pm	Closing Remarks <i>Eleni Tousimis, MD, FACS</i> President, American Medical Women's Association	
12:45 pm	Adjourn	
1:00 pm	AMWA Board Meeting Committee Meetings Exhibit Hall Closes	Various Rooms Various Rooms Plaza I

Monday, March 17, 2014

2:20 pm	Capitol Hill Tours	U.S. Capitol Visitor Center
---------	---------------------------	-----------------------------

Schedule subject to change.

Hotel Floor Plans



Program Faculty



Noreen Fraser
Founder and CEO
Noreen Fraser Foundation



Ardis Dee Hoven, MD
President
American Medical Association



Anthony S. Fauci, MD
Director, National Institute of Allergy and Infectious Diseases (NIAID)
National Institutes of Health (NIH)



Arianna Huffington
Chair, President, and Editor-in-Chief
Huffington Post Media Group



Julie Ann Freischlag, MD
Vice Chancellor for Human Health Services
Dean of the School of Medicine
UC Davis, School of Medicine



Louise Ivers, MD, MPH, DTM&H
Senior Health and Policy Advisor for Partners In Health (PIH)
Associate Professor of Global Health and Social Medicine, Harvard Medical School



Roberta E. Gebhard, DO
AMWA Secretary and Chair
AMWA Gender Equity Task Force
Chair, Department of Family Medicine, WCA Hospital



Mark G. Kris, MD
The William and Joy Ruane Chair in Thoracic Oncology
Attending Physician, Thoracic Oncology Service
Memorial Sloan Kettering Cancer Center
Professor of Medicine, Weill Cornell Medical College



Kevin Grigsby, DSW
Senior Director of Member Organizational Development
Association of American Medical Colleges



Story Landis, PhD
Director, National Institute for Neurological Disorders and Stroke (NINDS)
National Institutes of Health (NIH)



William A. Haseltine, PhD
Chairman and President, ACCESS Health International, Inc



Daria Mochly-Rosen, PhD
George D. Smith Professor of Translational Medicine
Professor, Chemical and Systems Biology
Director of SPARK, Stanford University



Sharonne N. Hayes, MD
Professor of Medicine and Cardiovascular Diseases
Founder: Women's Heart Clinic, Mayo Clinic
Rochester MN



Joseph Mortati, MBA
Adjunct Professor
The Johns Hopkins Carey Business School



Alexandra S. Heerdt, MD, MPH
Professor of Surgery
Memorial Sloan Kettering Cancer Center



Peggy M. Murray, PhD
Director, Global Alcohol Research Program
National Institute on Alcohol Abuse and Alcoholism, National Institutes of Health (NIH)

Program Faculty



Martha Nolan, JD
Vice President of Public Policy
Society for Women's Health Research



Bernice Sandler, EdD
Senior Scholar
Women's Research and Education Institute
"The Godmother of Title IX"



Danielle Ofri, MD, PhD
Associate Professor, New York University
School of Medicine
Editor-in-Chief, Bellevue Literary Review



Richard Schlegel, MD, PhD
Professor and Chair, Department of Pathology
Georgetown University Medical Center



Amy S. Paller, MD
Walter J. Hamlin Professor and Chair
Department of Dermatology
Director, Skin Disease Research Center
Northwestern University Feinberg Medical School



Mark R. Tercek, MBA
President and CEO
The Nature Conservancy



Representative Erik Paulsen (Rep-Minnesota-3rd)
Member of Congress



Norma Jo Waxman, MD
Associate Professor of Family
and Community Medicine
Faculty, The Bixby Center for Global
and Reproductive Health
University of California San Francisco



Stephanie Pincus, MD, MBA
Scholar in Residence
Institute of Medicine



Vivian W. Pinn, MD
Senior Scientist Emerita
Fogarty International Center, NIH
Former Director (Retired)
Office of Research on Women's Health, NIH

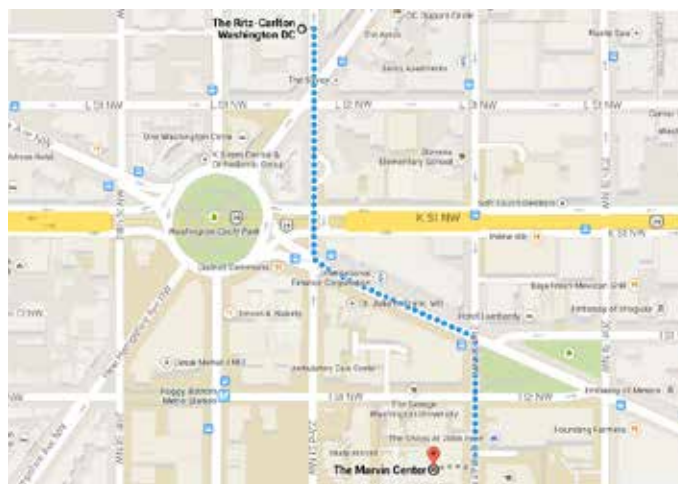


Liise-anne Pirofski, MD
Mitrani Professor of Biomedical Research, Professor
of Medicine, Microbiology and Immunology
Chief, Division of Infectious Diseases, Albert Einstein
College of Medicine and Montefiore Medical Center



Leslie Ritter, MA
Director of Government Affairs
Society for Women's Health Research

Walking Map to George Washington University



The Ritz-Carlton Washington D.C.
1150 22nd Street NW, Washington, DC 20037

- | | |
|---|--------|
| 1. Head south on 22nd St NW toward New Hampshire Ave NW | 0.2 mi |
| 2. Turn left onto Pennsylvania Ave NW | 0.1 mi |
| 3. Turn right onto 21st St NW | 0.1 mi |

The Marvin Center
800 21st Street NW, Washington, DC 20052

CME Information

Accreditation Statement

This activity has been planned and implemented in accordance with the Essential Areas and Policies of the Accreditation Council for Continuing Medical Education (ACCME) through the joint sponsorship of Indiana University School of Medicine and the American Medical Women's Association (AMWA). The Indiana University School of Medicine is accredited by the ACCME to provide continuing medical education for physicians.

Credit Designation Statement

Indiana University School of Medicine designates this live activity for 11.75 PRA Category 1 Credits™. Physicians should claim only the credit commensurate with the extent of their participation in the activity.

Faculty Disclosure Statement

In accordance with the Accreditation Council for Continuing Medical Education (ACCME) Standards for Commercial Support, educational programs sponsored by Indiana University School of Medicine (IUSM) must demonstrate balance, independence, objectivity, and scientific rigor. All faculty, authors, editors, and planning committee members participating in an IUSM-sponsored activity are required to disclose any relevant financial interest or other relationship with the manufacturer(s) of any commercial product(s) and/or provider(s) of commercial services that are discussed in an educational activity.

Note: While it offers CME credits, this activity is not intended to provide extensive training or certification in the field.

Meeting and Course Description

This conference will convene leading academic physicians, scientists, students, and prominent policy makers to discuss advances in women's health, new concepts in mentorship, and career advancement for women in medicine. The conference will address how advances in medical technology and affordable care will affect the treatment of patients in the future. The American Medical Women's Association Presidential Award will be presented to Arianna Huffington for her life's work and contributions to women's health at the National Museum of Women in the Arts, Saturday, March 15th at 9 pm.

Meeting and Course Objectives

At the conclusion of this meeting, participants should be able to:

- (1) Incorporate guidelines into clinical practice to improve management of disease states, based on collaborated guidelines for a variety of conditions discussed in this annual meeting.
- (2) Present new advances in the medical field and understand the impact of technology and policy on the care of the patients.
- (3) Support the mentoring and career development of women in medicine.

Advocacy Day on Capitol Hill

Advocacy Day on Capitol Hill is jointly sponsored by the American Medical Women's Association (AMWA) and the Society for Women's Health Research (SWHR).



The program will be held on March 13, 2014 from 7:30 AM to 5 PM on Capitol Hill. AMWA and SWHR will lead teams to advocate for women's health research and chronic disease prevention and the issue of gender equity with their members' offices. With the timely action of events in DC we will be asking for Congress to:

Support Representatives Waxman and Pallone in their effort to hold a hearing on the inclusion of women and minorities in health research.

Ensure that women are included in all phases of medical research and that sex differences are studied and evaluated at all levels.

Instruct federal health agencies to translate these sex differences from bench to bedside for the benefit of both women and men and make such information publically available.

Support the Paycheck Fairness Act (HR377/S84)

AMWA Annual Awards Luncheon

Presidential Recognition Award

Arianna Huffington
Patricia Yarberry Allen, MD
Gayatri Devi, MD, FACP

Elizabeth Blackwell Award

Mary Guinan, PhD, MD

Bertha Van Hoosen Award

Linda Brodsky, MD

Women in Science Award

Claudia Baquet, MD, MPH

Lila Wallis Women's Health Award

Florence Haseltine, MD, PhD

Camille Mermod Award

Katherine He

Anne C. Carter Leadership Award

Aleena Paul

Exceptional Mentor Award

Charis Eng, MD

AMWA Resident Division

Susan L. Ivey Courage to Lead Award

Erin Lessner, MD

AMWA Resident Division

Eleanor T. Christiansen Altruism Award

Heather Leisy, MD

AMWA Resident Division

Charlotte Edwards Maguire, MD

Outstanding Resident Mentor Award

Kanani Titchen, MD

Dr. Linda Brodsky, MD Essay Award

Student Poster Competition Awards

Resident Poster Competition Awards

Presidential Recognition Award:



Arianna Huffington

Arianna Huffington is the chair, president, and editor-in-chief of the Huffington Post Media Group, a nationally syndicated columnist, and author of thirteen books. In May 2005, she launched The Huffington Post, a news and blog site that quickly became one of the most widely-read, linked to, and frequently-cited media brands on the Internet. In 2012, the site won a Pulitzer

Prize for national reporting. In 2013, she was named to the Forbes Most Powerful Women list. In 2006, and again in 2011, she was named to the Time 100, Time Magazine's list of the world's 100 most influential people. Originally from Greece, she moved to England when she was 16 and graduated from Cambridge University with an M.A. in economics. At 21, she became president of the famed debating society, the Cambridge Union. She serves on several boards, including EL PAÍS, PRISA, the Center for Public Integrity, and the Committee to Protect Journalists.

Her 14th book, *Thrive: The Third Metric to Redefining Success and Creating a Life of Well-Being, Wisdom and Wonder*, will be published by Crown in March 2014.

Presidential Recognition Award:



Patricia Yarberry Allen, MD

Patricia Yarberry Allen, M.D., is a gynecologist in solo full time practice in New York City. She is the director of the New York Menopause Center, a Clinical Assistant Professor of Obstetrics and Gynecology at the Weill Cornell Medical College, and an Assistant Attending Obstetrician and Gynecologist at New York-Presbyterian Hospital. She is a board certified fellow of

the American College of Obstetrics and Gynecology. Dr. Yarberry

Allen is a Faculty Advisor of The Weill Cornell Community Clinic and the Director of the Women's Clinic at this medical student run, free clinic, the Weill Cornell Community Clinic, where she oversees the care of patients, and most importantly, mentors the medical students who work in the clinic. She is a founder of Women's Voices for Change and the publisher of its on-line zine. This site, www.womensvoicesforchange.org, has a growing audience whose demographic, women over forty, are given accurate health information, profiles of extraordinary women of reinvention, daily posts from columnists who help us provide the new truth that women in their second half of life are visible, vital and are a force to be acknowledged and respected.

Presidential Recognition Award:



Gayatri Devi, MD, FACP

Gayatri Devi MD, FACP is a Clinical Associate Professor of Neurology and Psychiatry at New York University School of Medicine and Director of the New York Memory Services. Previously an Assistant Professor of Neurology at Columbia University's College of Physicians and Surgeons, Dr. Devi is board certified in the specialties of Neurology, Psychiatry, and Pain Medicine.

She has specialized in the area of memory disorders for the last two decades and published and presented extensively in this area. She has discussed memory in the media, including on NPR, the BBC, Time, CBS and the Wall Street Journal. Dr. Devi is President of the National Council for Women's Health, starting the Girls Get Healthy program in 2004, providing weekly nutrition, exercise, and sex education classes to inner-city New York City school girls. She volunteers as a Mounted Auxiliary Parks Patrol Officer for the NY City Dept. of Parks. She is a blogger for the Huffington Post and for Psychology Today. She is the author of *Estrogen, Memory and Menopause* (Alpha Sigma Books, 2001), *What your doctor may not tell you about Alzheimer's Disease* (Time Warner Books; November 2004), and *A Calm Brain: Unlocking your Natural Relaxation System* (Penguin Dutton Books, 2012).

AMWA Annual Awards Luncheon

Elizabeth Blackwell Award:



Mary Guinan, PhD, MD

Dr. Mary Guinan is a physician and scientist who was employed at the Centers for Disease Control and Prevention in Atlanta GA in various scientific and administrative positions for over 20 years rising to a top leadership position as the Associate Director for Science. She was part of the first CDC Task Force to investigate the AIDS epidemic. That story is told in the book and

movie “And the Band Played On.” She has worked in public health throughout her career and has extensive experience both nationally and internationally in prevention and control of diseases including service in the smallpox eradication program in India. In 1998, she left CDC to start a second career as Nevada State Health Officer. In 2004 she became the founding Dean of the UNLV School of Public Health, now renamed the School of Community Health Sciences. In 2013, she stepped down as Dean and joined the faculty. She is currently writing a book about her CDC experiences. She has been an AMWA member for 40 years and served as president.

Dr. Guinan received her MD from Johns Hopkins Medical Institutions and her PhD from the University of Texas. She is board certified in Internal Medicine, Infectious Diseases, Preventive Medicine, and Public Health.

Bertha Van Hoosen Award:



Linda Brodsky, MD

Linda Brodsky, MD was an internationally-renowned pediatric otolaryngologist and founder of Women MD Resources, an organization dedicated to helping women physicians get the jobs they want, be paid what they deserve and “have it all.” She helped change the way the healthcare marketplace and women physicians engage to achieve these goals. Dr. Brodsky spent

25 years building a well-respected department at the Children’s Hospital of Buffalo, and was the first woman ever, in any surgical department, to be promoted to tenured full professor of otolaryngology and pediatrics at the State University of New York at Buffalo. At the top of her career, she became aware of information that led her to believe that her she was a victim of gender discrimination, and she spent the next 10 years fighting her way through a legal labyrinth. Since the resolution of her legal battles in 2007 and 2008, Dr. Brodsky devoted her energies to changing the status quo for the next generation of women physicians and the patients they serve. Her full story is found on her personal website www.lindabrodskeymd.com. She also blogged at www.thebrodskeyblog.com and Like Mother, Like Doctor with her medical student daughter Dana at www.talkingscience.org. For many years, she served as chair as AMWA Gender Equity Task Force

Women in Science Award:



Claudia Baquet, MD, MPH

Dr. Claudia Baquet’s research laid the foundation for what is now called “health disparities” dating back to her landmark research at NCI [1984-1992] and her role on the Secretary’s Task Force on Black and Minority Health Chapters on Health Services and Cancer. This led to a policy change at NCI in reporting cancer statistics by requiring the inclusion of race and ethnic specific data

which were essential in the development of the first intervention trials to address screening and tobacco cessation for African Americans. Later, this led to the National Black Leadership Initiative on Cancer; the Hispanic and Appalachia Leadership Initiatives on Cancer. Research programs for Native Americans and Native Hawaiians were also supported by her research. She served as a fellow in the office of Senator Edward Kennedy, working on women’s health research, minority health, and health care workforce policy. She is an expert on the policy and health needs for populations in the U.S. Insular Areas and rural health disparities. She served as Deputy Assistant Secretary for Minority Health in PHS (1992-1994).

Dr. Baquet co-developed the HHS “National Best Practice Award” for increasing availability and participation of rural underserved patients in clinical trials. Her research on factors related to barriers to clinical research participations for rural and minority patients was instrumental in establishing targeted interventions in Maryland’s rural and underserved regions that focus on increasing the willingness to participate in and refer patients for clinical trials and biospecimen donation.

She directs the Bioethics and Health Disparities Research Center and implements research and educational initiatives designed to increase public trust in research by the public and community health care professionals. Dr. Baquet’s contributions to legitimizing the role of policy research in addressing health disparities have elevated this field to national prominence.

Her novel model for bidirectional academic-community engagement in partnered research led to leveraging significant disparities research and educational funding for community organizations of over \$18 million from her grant portfolio which exceeds \$70 million.

She has been formally recognized by the Maryland Senate for her work to reduce disparities and for her longstanding commitment to the community. Her other awards include NIH’s Dr. Martin Luther King, Jr. Special Award for “Closing the Health Gap in the Communities We Serve”, the American Public Health Association’s 2005 David P. Rall Award for “National Advocacy in Public Health”, and the National Medical Association’s Council on Concerns for Women Physicians Research Award. Dr. Baquet received the “Racial Justice Award” from the YWCA of the Greater Baltimore Area. In 2010, she was awarded the American Cancer Society National Board of Directors St. George Award and in 2011, she received the Martin Abeloff Award for Excellence in Cancer Research, Education and Cancer Control from the Maryland Governor’s Cancer Council. In 2012, she was honored by the American Association for Cancer Research (AACR) for her significant contributions to advancing the science of cancer and health disparities research. She received the American Heart Association’s “2014 Watkins-Saunders Award” for contributions to the field of health disparities research and in March of 2014 she will receive the American Medical Women’s Associations (AMWA) “Women in Science Award”.

Always willing to share her expertise and knowledge, Dr. Baquet has mentored hundreds of faculty, students and residents. She is especially sought after as a mentor by women physicians who are early in their careers.

Dr. Baquet received her M.D. from Meharry Medical College, Nashville Tennessee, and her M.P.H. in epidemiology from Johns Hopkins University, School of Hygiene and Public Health. Her residency was in pathology at St. Louis University and Wadsworth Veterans Administration Hospital.

Lila Wallis Women's Health Award:



Florence Haseltine, MD, PhD

Dr. Haseltine is currently consulting with IT and biomedical companies and develops web databases for not-for-profit organizations. Her company, Haseltine Systems manufactures containers to protect wheelchairs and she holds both design and IT business patents. At heart she is a pioneer who has accepted few limits. As Director of the Center for Population Research of the

National Institute of Child Health and Human Development, at the National Institutes of Health, she led the way for advances in contraception research and other critical health areas. She is a fighter and has tirelessly promoted the advancement of women and was the founding editor of the *Journal for Women's Health*. In 1990, she founded the Society for the Advancement of Women's Health Research (SWHR). She now is the Web Developer and Content Management of the RaiseProject. Retiring in 2012, she was named Emerita Director of the Center for Population Research, NIH.

Her educational background shows her range of talents and interests. In 1964 she received a B.A. in Biophysics from the University of California-Berkeley. Receiving her Ph.D. in Biophysics in 1970 from the Massachusetts Institute of Technology, she went on to graduating with an M.D. in 1972 from the Albert Einstein College of Medicine. She interned at the University of Pennsylvania and did a residency at Boston Hospital for Women (Brigham & Women's Hospital). At Yale University she held several positions in the Department of Obstetrics and Gynecologist and is board certified Obstetrician/Gynecologist and Reproductive Endocrinologist. She holds multiple patents in IT internet secure communications. An early fan of electronic communications, her current activities include developing smart phone Apps for the field of Reproductive Sciences and her latest app "Embryo" is online and has received an award from the National Library of Medicine. Recently she issued the App Human Genome for the iPad.

Camille Mermod Award:



Katherine He

Katherine He is a graduate of University of California, Berkeley with degrees in Environmental Sciences and French Studies. With a professional background in local government sustainability, she is now transitioning to a career in medicine and will matriculate into medical school in Fall 2014. In the past, Katherine has worked in the Environmental Protection Agency as

a Physical Science Technician, and through Americorps at the Alameda County General Services Agency as a Sustainable Transportation Associate. She currently works at AMWA as the Administrative Assistant/Special Projects Coordinator, at Kaplan Test Prep as an MCAT tutor/instructor, and at Three Babes Bakeshop as a pie baker. Katherine volunteers at the Berkeley Free Clinic, where she is co-coordinator of the Saturday Services Section, which provides reproductive health services to women and transgender populations. She also volunteers as a Certified Enrollment Counselor, assisting individuals with navigating Covered California, California's health insurance exchange.

Anne C. Carter Leadership Award:



Aleena Paul

Aleena Paul is a member of the Albany Medical College Class of 2016, pursuing an M.D. with a Distinction in Health Systems Analysis.

She has been involved with AMWA since the beginning of her medical education, serving as the treasurer of Albany Medical College's local branch and the 2013-2014

Region 2 (NY, NJ) Director. As Regional Director, she encouraged the activation of new medical and undergraduate branches, and hosted an AMWA regional conference focused on "Empowering Future Leaders in Medicine." She also enjoys serving as AMWA's Publications Chair, working on the Connections and Newsflash newsletters to spread the impact of AMWA's chapters and members on the local and national scene.

At Albany Medical College, Aleena is especially proud of her work with the local AMWA branch's annual Interpersonal Violence Awareness week, which aims to educate health professionals on the multifaceted needs of their patients who have been affected by interpersonal violence. In addition, she serves as the student coordinator for the Albany Medical College Tobacco Cessation Consult Service, and is conducting a healthcare management study on implementing quality improvement measures for this service. Believing in the necessity of diversifying the medical profession, Aleena also mentors pre-medical students from underrepresented minority groups through the Student National Medical Association.

Inspired by her journalistic endeavors at her undergraduate newspaper, Aleena founded and serves as editor-in-chief of in-Training (in-training.org), the online magazine for medical students. in-Training serves as a forum for medical students across the globe to share their unique passions, reflect on their medical education, and discuss the future of the medical profession. Since its launch in July 2012, in-Training has published over 260 articles written by medical students from over 60 institutions in the US, Canada, India, UAE, and Ireland.

Aleena graduated Phi Beta Kappa from Union College's Leadership in Medicine program in 2012, majoring in biology and sociology. At Union, Aleena conducted sociological research on how media representations have affected female professionals, and how gender stereotypes continue to challenge the leadership aspirations of young female professionals. She subsequently obtained her MBA in Healthcare Management from Union Graduate College in 2013.

Aleena believes that women physicians play a vital role in redefining access to health care and equality in our society, and is thus excited to be contributing to AMWA's work in advancing women in medicine and addressing women's health concerns.

Exceptional Mentor Award:



Charis Eng, MD

Chairwoman, Cleveland Clinic Genomic Medicine Institute

Charis Eng, MD, PhD is the founding Chair of the Genomic Medicine Institute at the Cleveland Clinic, founding Director of the institute's clinical component, the Center for Personalized Genetic Healthcare, Professor and Vice Chairman of the Department of

Genetics and Genome Sciences at Case Western Reserve University School of Medicine. She was honored with the Sondra J. and Stephen R. Hardis Endowed Chair in Cancer Genomic Medicine in 2008 and the American Cancer Society Clinical Research Professorship in 2009. More recently, she was elected to the Institute of Medicine of the US National Academies of Sciences for her achievements and leadership in genetics- and genomics-based research and personalized healthcare. Dr.

Eng's research has been acknowledged as the paradigm for performing cancer genetics research which can be brought to clinical practice. At the clinical interface, she is acknowledged as one of the rare "go to" people on what is and how to implement genetic- and genomics-enabled personalized healthcare.

Dr. Eng has published over 390 peer reviewed original research papers and has received numerous awards and honors including being named a Local Legend from Ohio. She is Editor-in-Chief of Endocrine-Related Cancer. She has served on numerous boards and national committees.

Dr. Eng is a natural serving leader and mentor. She began to formalize her stepped mentorship and 360-degree mentorship program with her Doris Duke Distinguished Clinical Scientist Award and honed it with her ACS Professorship, both awards conferred based, in part, on mentorship. She utilizes this philosophy in her own lab, clinic, institute and organization. She is also proud to mentor and sponsor women and/or minority physician and physician-scientists nationally and internationally.

Dr. Eng has 18 years' experience as physician-scientist, holds BA, MD and PhD degrees from the University of Chicago, received internal medicine residency training at Beth Israel Boston and medical oncology fellowship at the Dana-Farber Cancer Institute, and unique training in the research and practice of cancer genetics at the University of Cambridge, UK.

AMWA Resident Division

Susan L. Ivey Courage to Lead Award:



Erin Lessner, MD

Dr. Lessner is Chief Resident in her ophthalmology residency at the University of South Carolina. Her work educating high school students about the field of medicine, her research in female cyclical acne and eyelid surgery for women with prominent periorbital fat pads, her service to the South Carolina State House, her mentoring of medical students, and her

service as President of the South Carolina Medical Association all demonstrate her commitment to women's leadership in medicine. Says Dr. Lessner, "I hope to see more women in national and state leadership roles in organized medicine. Although more women are going into classically male dominated fields, such as ophthalmology, their involvement in national and state leadership roles does not reflect their presence in the fields. This is also the case in academic medicine, as fewer than 10% of ophthalmology residency Chairs are women. I hope to see more women in department leadership roles as well." We applaud Dr. Lessner for her continued excellence in her field and her commitment to women in medicine.

AMWA Resident Division

Eleanor T. Christiansen Altruism Award:



Heather Leisy, MD

Dr. Leisy is an ophthalmology resident at Eastern Virginia Medical School and was elected by her peers as the person who embodies the spirit of this award, an award that celebrates "dedication to the welfare and success of all women physicians in training." Dr. Leisy is committed to the service of her peers, as seen throughout her leadership as MUSC AMWA President, as AMWA Regional

Coordinator for her region, and through her commitment to the AMWA community at large. She is truly an "ambassador of the healing arts," and we align ourselves with her goals for women in medicine to "continue to work together, to demonstrate how to balance personal and professional lives, and to continue to show our ability to be leaders in medicine."

AMWA Resident Division

Charlotte Edwards Maguire

Outstanding Resident Mentor Award



Kanani Titchen, MD

Dr. Titchen is a pediatrics resident at Jefferson/ A.I. duPont Hospital for Children. She has "demonstrated outstanding mentorship and guidance to AMWA national student and resident members" alike, through her volunteerism during medical school and residency. Writes one resident of Dr. Titchen's commitment to the mentoring of students and colleagues, Kanani "cultivated

current AMWA-RD leaders to grow in their own leadership roles, and she continues to entice us to continue our involvement. She has advocated for (Resident Division) financial stability, web site presence, and inclusion of residents at the national physician AMWA level. Dr. Titchen initiated an innovative research project to educate physicians regarding sex trafficking. In doing so, she included several residents in the research process, data acquisition, and theoretical process of educating US physicians regarding sex trafficking. Dr. Titchen... is a strong leader who can guide other people with varying talents and strengths. She leads by example."

Exhibit Hall

Saturday, March 15, 2014

8:00 AM – 5:00 PM

Plaza I

Sunday, March 16, 2014

8:00 AM – 1:00 PM

Plaza I

AMSA

Karen E. Davidson Esquire

Kaplan Medical

Hologic

Lone Oak Medical Technologies

Noven Therapeutics - Women's Health

NYU Stern Executive MBA Program

SanMedica International, LLC

Capitol Hill Tours

Friday March 14, 2014 at 9:00am

(90 minute tour, arrive 8:15am); Limit 40.
Free but pre-registration required.

Meet AMWA representative

(holding AMWA signage)
at the U.S. Capitol Visitor Center before 8:15.

Monday March 17, 2014 at 2:20pm

(90 minute tour, arrive 1:35pm);
Limit 50. Free but pre-registration required.

Meet AMWA representative

(holding AMWA signage)
at the U.S. Capitol Visitor Center before 1:35.

The United States Capitol in Washington, D.C., is a symbol of the American people and their government, the meeting place of the nation's legislature. The Capitol also houses an important collection of American art, and it is an architectural achievement in its own right. It is a working office building as well as a tourist attraction visited by millions every year.

The U.S. Capitol Visitor Center is the newest addition to this historic complex. At nearly 580,000 square feet, the Visitor Center is the largest project in the Capitol's more than two-century history and is approximately three quarters the size of the Capitol itself. The entire facility is located underground on the east side of the Capitol so as not to detract from the appearance of the Capitol and the grounds designed by Frederick Law Olmsted in 1874.

Please arrive at least 45 minutes in advance of this tour time and adhere to the prohibited list of items for the Capitol (including the U.S. Capitol Visitor Center below:

- Liquid, including water
- Aerosol containers
- Knives of any size
- Mace and pepper spray
- Razors and box cutters
- Any bag larger than 18" wide x 14" high x 8.5" deep
- Electric stun guns, martial arts weapons or devices
- Guns, replica guns, ammunition, and fireworks
- Food or beverages of any kind, even unopened
- Non-aerosol spray (except for medical prescriptions)

Any pointed object, e.g. knitting needles and letter openers (Pens and pencils are permitted.)

The following items are **not** allowed in the Senate and House Galleries (and can be stored securely on-site):

- Battery-operated electronic devices (medical devices are permitted)
- Cameras
- Cans and bottles
- Creams, lotions or perfume
- Packages, briefcases, backpacks or suitcases
- Strollers
- Video recorders or any type of recording device

Transportation information to the capitol:

www.visitthecapitol.gov/plan-visit/getting-the-capitol

Lodging and Venues

The Ritz-Carlton Hotel, Washington, DC

1150 22nd Street NW
Washington, DC 20037
(202) 835-0500

National Museum of Women in the Arts

1250 New York Ave NW
Washington, DC 20005
(202) 783-5000
www.nmwa.org

George Washington University

Marvin Center, Continental Ballroom
800 21st St NW
Washington, DC 20052
(202) 994-7470

Georgetown University Hotel and Conference Center

3800 Reservoir Rd NW
Washington, DC 20007
(202) 687-3200

U.S. Capitol Visitor Center

First St SE, Washington, DC 20004
www.visitthecapitol.gov
(202) 226-8000

Poster Presentations

Posters Session: Saturday, March 15, 7:30 – 8:30 AM and 4:00 – 4:30 PM

Plaza II

Set-Up: Saturday, March 15, 7:00 – 7:30 am

Tear Down: Saturday, March 15, 4:30 - 5:00 pm

Attending Physician Posters

- **Benjamin, T.**
"Prenatal Care of a Preadolescent Victim of Sex Trafficking: A Case Report."
- **Sandhu, N.**
"Care of the Breast Cancer Survivor: Oncologist or Primary Care Provider?"
- **Weida, J.**
"A 20-Week Abdominal Pregnancy Occurring 10 Years After Cesarean Hysterectomy."

Resident Physician Posters

- **Harris AS., Bonaminio D., Rohr-Kirchgraber T.**
"Breast Creepy Crawlers."
- **Hill, S.**
"Complement Deficiency in an Adolescent With Recurrent Disseminated Gonococcal Infections."
- **Irojah, B.**
"Metastatic Papillary Thyroid Cancer in a Patient with Chronic Lymphocytic Leukemia and Prostate Cancer. A Case study."
- **Garza, S.**
"Workplace Bullying Among Physicians: A Gender Focused Study."
- **Gulla, A.**
"Radiation-Related Quality of Life Parameters and Toxicity After Targeted Intraoperative Radiotherapy (IORT): Preliminary Results."
- **Kritikou, I.**
"Sleep Apnea, Abdominal Obesity, Inflammation and Insulin Resistance: Gender Specific Associations."
- **Lessner, E.**
"Acanthamoeba and Filamentous Fungal Keratitis: A Case of Two Rare Ocular Infections."
- **Loo, D.**
"Quality of Life and Mental Health Indicators in Community Members Living Near Open Cast Mines in Northern Colombia."
- **Saravanan A., Rauchenstein J., Markovic M.**
"From Birth Control to Blood Clot: Dural Venous Sinus Thrombosis in the Oral Contraceptive User."
- **Titchen K., Becker-Rysavy M., Loo D., Chin E., Sharif I.**
"Domestic Child Sex Trafficking: The Need for Physician Education."

Medical Student Posters

- **Aggarwal N., Ketchem E., Welch J.**
"Bilateral Cystine Staghorn Calculi and Ureteral Stones in a Teenage Male."
- **Armstrong S., Walker KH., Bonaminio DN.**
"Doctor, I Have a Lump in My Breast: Is It Cancer or Is It Granulomatous Mastitis."
- **Blankenship L., Harrison S., Oehme K.**
"A National Hotline Survey of Victims: Are Healthcare Professionals Screening for Domestic Violence?"
- **Botros D., Beckerman SR., Hollingsworth E., Orenstein M., Castro WD., Byrne MM.**
"Project Serve: A Service Experience with Emphasis on Cultural Competency and Communication for Student Healthcare Providers."
- **Brigham E., Hennrikus W.**
"Cleidocranial Dysplasia: A Case Report in Pediatric Orthopedics."
- **Brown A., Nagala S., Scoffings D., McLean MA., Priest AN., Jani P., Griffiths JR.**
"Textural Analysis of Echo-Planar Diffusion-Weighted Imaging Improves Preoperative Characterization of Suspected Thyroid Tumors."
- **Bruns, M.**
"Service Work and Nutritional Education in Santa Marta, Colombia."
- **Buchanan PN., Zheng J.**
"Fast Resting Non-Contrast MRI Perfusion Can Detect Myocardial Ischemia with Moderate Sensitivity and Specificity."
- **Buckner, M.**
"Discovering the Significance of AA Association with Eczema Visualized Through Proscope HR Imaging."
- **Burnette C.**
"An Evaluation of the Florida State University AMWA Mentor Program."
- **Calibao L., Mechaber HF., Silverstein A., Pala K.**
"A Balancing Act: A Single Institution's Experience with Pursuing Gender Equality."
- **Conrad C., Ribble A., Benton R.**
"Role of endothelial miRNAs in Microvascular Plasticity Following Spinal Cord Injury (SCI)."

- **DeFilippis E., Kleiman D., Derman P., DiFelice G., Eachempati S.**
"Spinning-Induced Rhabdomyolysis and the Risk of Compartment Syndrome and Acute Kidney Injury."
- **Deng L.**
"JNK and FAK as Targets for Inhibition in Gain-of-Function Shp2-Induced Myeloproliferative Disorder."
- **Esquenazi M.**
"A Novel Approach to Brain Death: Case Study of Israel's Cerebro-Respiratory Death Act."
- **Fahs F, Colombo R.**
"Inpatient Rehabilitation Unit Art Therapy Stress Management."
- **Geros K., Austrom MG., Hemmerlein K., McGuire S., Gao S., Callahan C., Clark D.**
"Use of a Multiparty Web Based Videoconference Support Group for Family Caregivers."
- **Gersdorff N., Leech L., Lazo L., Welch J.**
"Severe Hypocalcemia."
- **Guilkey H., Tsung I., Zucker J., Rouse T.**
"Rhabdomyosarcoma with Smith-Lemli-Opitz Syndrome."
- **Gul Z., Tranchito L., Cikach F., Shrestha K., Dweik R., Tang WH.**
"Exhaled Concentrations of Acetone and Pentane Track with Weight Loss in Response to Diuretic Therapy in ADHF Patients."
- **Hanke R., Shanley C., Studzinski D., Ragheb S.**
"Carotid Atherosclerosis: Biomarkers to Identify Patients at Risk for Stroke."
- **Hissong E., Shao J., Rohr-Kirchgraber T.**
"The Childhood Cancer Survivor: Unique Cardiovascular Risks."
- **Ho J., Glackin CA., Sharp SB.**
"Development of an Assay System to Study Id1, Id2, and Twist Promoter Activities."
- **Iliakova M., Spertus J., Jones P., Decker C., Chan P., Fridley B., Ellerbeck E.**
"Opportunity to Improve Hospital Resource Allocation: Using the MAX Model to Identify Medication Cessators."
- **Jerzewski K., Kulik A.**
"Against All Odds: Unexpected Late Survival After Presentation with Acute Type A Aortic Dissection and Cardiac Tamponade."
- **Jessup R., Ukoli FA., Goodin C., Underwood A.**
"Legislative And Community Support for Breastfeeding Promotion in African American Women."
- **Karas L., Goldsmith CE., Ruppelt SC., Goldman AM.**
"The Epidemiological Pilot Analysis of Epilepsy Patients in a Community Clinic Aims to Inform Effective Care."
- **Kim C., Lin J., Lah M.**
"Defiant Behavior in Adolescence? No, Difficulty in Diagnosis: The Mitochondrial Disease Dilemma."
- **Kuruppu D., Carr C., Rohr-Kirchgraber T.**
"Coping With Changing Roles: When Doctors Become Patients."
- **Langdon S., Kulik A.**
"Contemporary Outcomes after Pericardial Window Surgery: Impact of Surgical Technique."
- **Leavell Y.**
"Assessment of the Chicken Egg Membrane as a Stimulator of Wound Healing."
- **Lee G., Eisenstark A., Kazmierczak R., Barnes B.**
"Examination of Mutant Strains of Salmonella Typhimurium Over-expressing Potential Cancer Targeting and Invasion Phenotype genes in PC-3M Prostate Tumors via Invasion Assays."
- **Leemputte M., Sher S., Evans K.**
"Management of Complex Abdominal Wounds, Is There a Straightforward Solution?"
- **Mayer K., Kuo YH., Davis JM., Adams A., Cabasso O., Vernick JJ., Hagopian EJ.**
"The Impact of Multidisciplinary Hepato-Pancreato-Biliary Case Conference on the Management of Pancreatic Cancer."
- **McGuinn K/, Brennan-Crispi DM., Cooper F., Wahl JK., Mahoney MG.**
"Desmoglein-2 Activates Mitogenic Signaling by Modulating Scaffolding Proteins in Lipid Rafts."
- **Mefferd JM., Harris B., Qualls J., Bruce J., Majithia V., Thigpen C., Tirmizi A.**
"More than Skin Deep: Paraneoplastic Dermatomyositis in Ovarian Cancer."
- **Meyer K., De Leon M., Condello S., Matei D.**
"Inhibiting Ovarian Cancer Invasiveness Using Novel Drug Imipramine Blue."
- **Miller K., Patel N., Rohr-Kirchgraber T.**
"You Are Bursting My Bubble: Ovarian Cysts."
- **Miner E.**
"Local Food Systems' Relationship to Health: Fad, Fable or For Real? A Look at the literature."
- **Morrison L., Robitz R., Ventura A., Blom T., Melton MC., Bennett A.**
"Evaluation of a Health and Empowerment Program Created by Medical Students for Commercial Sex Workers: Pilot Study."
- **Myers L.**
"Spectral-domain Optical Coherence Tomography Features of Choroidal Rupture."
- **Narsinghani A., Clark B., Rohr-Kirchgraber T.**
"Legal guardianship in Adults with Eating Disorders."

- **O'Connor K., Rohr-Kirchgraber T.**
"When It's Not Just Sinusitis: Primary Osteogenic Sarcoma of the Sphenoid Sinus."
- **O'Neal D., Nyman J., Uppuganti S., Rowland BJ., Granke M., Sterling JA.**
"Assessing the ZSD Rat as a Pre-clinical Model to Study the Effect of Diabetes on Bone."
- **Olabisi J., Reynolds R., O'Neal K., Rohr-Kirchgraber T.**
"My Stomach Hurts! When Should H Pylori Testing Be Done?"
- **Orlando M., Manka M., Levine D., Fitzgerald A.**
"Gender Representation in the Johns Hopkins University School of Medicine (JHUSOM) Learning Environment."
- **Osman S., Morton-Eggleston E., Seita A.**
"Assessing the Need for Mental Health Services in UNRWA Clinics in Lebanon for Palestinian Refugees from Syria."
- **Patel A., Olcese J.**
"Amyloid-beta Plaque Selection in a Mouse Model of Alzheimer's Disease."
- **Patterson D., May C.**
"Deep Vein...Leiomyosis?!"
- **Paul A., Major A.**
"in-Training, the Online Magazine for Medical Students: A Healthcare Management Case Study."
- **Pradeep N., Sutin AR.**
"Depressive Symptoms Between Spouses in Older Adulthood."
- **Renati, S.**
"Necessity of Primary Care Visits for Acute Respiratory Infections."
- **Seidel K., Bejes C.**
"Hyperlipidemia Secondary to Hypothyroidism."
- **Seifert K., Wiener J., DeOrchis D.**
"Physicians Use Perfusion Imaging to Aid in Diagnosis and Treatment Decisions for Acute Ischemic Stroke."
- **Shah A., Valentine V.**
"The Nature of Testosterone and Vitamin D in Lung Transplantation."
- **Shah M., Pauze D., Pauze D., Robak N.**
"Health Information Exchange (HIE) Utilization Trends in an Emergency Department Setting."
- **Shahawy S., Janisiewicz AM., Annino D., Shapiro J.**
"A Comparative Study of Outcomes for Endoscopic Diverticulotomy versus External Diverticulectomy."
- **Srivastava R.**
"Commercial Weight Loss Programs - Which Ones Work? A Systematic Review."
- **Tannenbaum L., Dufurrena Q., Harris C., Taylor L., Galassi A., Kantelhardt E., Challinor J., Tekle T.**
"Providing Chemotherapy in Severely Resource-Limited Settings."
- **Teat R., Elosiebo R., Bryant E.**
"A Case of Methotrexate Induced Skin Necrosis."
- **Tsung I., Shelley WC., Kim H., Yoder MC.**
"Comparison of Human Platelet Lysate and Fetal Bovine Serum Containing Media for Optimal Culture Conditions of Endothelial Colony-Forming Cell Expansion."
- **Umesh V., Rape A., Ulrich T.**
"Regulation of Growth Factor Dependent Tumor Cell Proliferation by Extracellular Matrix Mechanics."
- **Watson S., Farrukh R., Nelson A., Wang K., McMahon L.**
"Alterations in O-GLCNAC with Alzheimer's Disease."
- **Wee S., Lincoln L., Recher A.**
"Leave No Stone Unturned- Raising Awareness for Pediatric Gallstone Pancreatitis."
- **Xi AS., Topf JM.**
"The Prevalence of Social Media Policies in U.S. Medical Schools."
- **Xu C., Villena-Vargas J., Sadelain M., Adusumilli P.**
"Induction of Tregs in Chimeric Antigen Receptor (CAR)-Transduced T cells: Role of Co-stimulation and Tumor-Secreted TGF-beta."



Meeting Sponsors

We would like to thank the following sponsors for their generous support of the Annual Meeting

Bronze Level Sponsors

Covidien
Dorskind Family Fund
Hologic

Sponsors

DISCUS
Gilead Sciences

In-kind Sponsors

Philippa Tarrant Floral Design
Well Dunn Catering
Capital Meat Company
Design Foundry
Georgetown MedStar Health
John Farr Lighting
Kaplan Medical
MyDeejay
Party Rentals Ltd
Potomac Floral Wholesale
RCI Systems
Rodney Bailey Photojournalism

Grants to Support

Medical Student Attendance

Albany Medical College
Georgetown University School of
Medicine
Indiana University School of
Medicine

AMWA Program Committee

Physician Co-Chairs:

Eleni Tousimis, MD, FACS
Florence Haseltine, MD, PhD

Student Co-Chairs:

Amanda Xi
Rachel Teat

Members:

Neelum Aggarwal, MD
Ekemini Akan, MD
Sonia Bhandari
Gayatri Devi, MD, FACP
Helane Fronek, MD
Roberta Gephart, DO
Farzanna Haffizulla, MD, FACP
Ilia Kritikou, MD
Mary Leemputte
Laura McCann, MD
Mary Ellen Morrow
Marissa Orenstein
Megan Orlando
Samia Osman
Amy Paller, MD
Theresa Rohr-Kirchgraber, MD
Jacquelyn Shaw
Emily Suh
Kanani Titchen, MD
Carey Wickham
Andrea Winter
Jackie Wong

Gala Host Committee:

Brooke Carnot
Page Evans
Caren Palese Venturi, MD
Colman Riddell
Carrington Tarr
Maria Tousimis

AMWA:

Eliza Chin, MD, MPH
Taylor Entsminger
Katherine He
Robin Turner

Indiana University School of Medicine:

Monica Armin
Natalie Auberry, JD
Kurt Snyder, JD
Lisa Susemichel, CMP

Society of Women's Health Research:

Martha Nolan, JD
Leslie Ritter, MA

AMWA Corporate Sponsors

Allergan
GL Advisors
Hologic
Medelita

Wood Insurance
Women MD Resources
Florida Medical Center

About AMWA

The American Medical Women's Association (AMWA) is an organization that functions at the local, national, and international level to advance women in medicine and improve women's health. We achieve this by providing and developing leadership, advocacy, education, expertise and mentoring and through building strategic alliances.

Founded in 1915, AMWA is the oldest multi-specialty organization of women physicians. As the vision and voice of women in medicine for nearly a century, AMWA empowers women to lead in improving health for all, within a model that reflects the unique perspective of women.

A Brief History of AMWA

On November 18, 1915, Dr. Bertha Van Hoosen,* a prominent Chicago surgeon, founded the Medical Women's National Association (MWNA) to bring "medical women into communication with each other for their mutual advantage and to encourage social and harmonious relations within and without the profession." The founding MWNA meeting was held at the Chicago Women's Club with 9 women physicians and 2 women philanthropists. Yearly dues were set at \$2. Dr. Van Hoosen was chosen to be the first president, and Dr. Eliza Mosher, honorary president. The organization's name would later be changed to the American Medical Women's Association (AMWA) in 1937.

In the early 20th century when women physicians were a distinct minority, AMWA provided a forum of networking and support that women physicians could not find in the American Medical Association (AMA). But in addition to advocating for the advancement of women physicians, AMWA focused attention on preventive medicine and women's health. Over the past century, AMWA members have participated in numerous educational and public health initiatives, including initiatives on smoking cessation, cardiovascular disease, reproductive health, and women's health. During the late 20th century, AMWA supported the passing of many bills, including the Family and Medical Leave Act, the Tobacco Product Education and Health Promotion Act, the Violence Against Women Act, the Affordable Care Act, and legislation supporting reproductive choice. AMWA continues to advocate for gender equality and women's health.

The organization's advocacy work dates back to 1921, when the MWNA lobbied for the passage of the Sheppard-Towner Act. This law established prenatal and child health centers, ultimately laying the foundation for maternal health and well-child care programs today. In 1943, AMWA successfully led the fight to grant women physicians "Commissioned Officer" status in the military. This ties into another part of AMWA history as it

had been the exclusion of women physicians from military rank during World War I that led to the formation of the American Women's Hospitals (AWH), AMWA's charitable arm. As AMWA Past President, Dr. Esther Pohl Lovejoy relates, "The women of the medical profession were not called to the colors, but they decided to go anyways," voluntarily providing medical relief to the war-ravaged areas of Europe. The humanitarian work of the AWH would spread to other countries, providing aid during famine, civil unrest, religious persecution, and natural disasters. Today, the American Women's Hospitals Service (AWHS) continues to support need-based clinics and hospitals around the world and provide travel grants for medical students and residents working abroad in impoverished communities.

Through the work of the AWH, AMWA established strong international ties, and in 1919, Dr. Esther Pohl Lovejoy founded the Medical Women's International Association (MWIA) to promote the fellowship of women physicians from all over the world culminating with an international congress held every few years. AMWA delegates most recently represented the U.S. at the 29th MWIA Congress in Seoul, Korea. Today, MWIA members represent women physicians from 90 countries in 6 continents.

AMWA's membership has grown over the past century, and at its peak in the 1990's had a membership of 13,000 and over 75 physician branches all over the country. A student division was established in 1957, a residency division in 2010 and a pre-medical division in 2013. Most allopathic and osteopathic schools in the United States have an active AMWA student branch wherein women medical students can find networking, support, and opportunities for both scholarly and service driven activities. As its centennial year approaches, AMWA will continue to champion issues of gender equity, health disparity, and women's health while mentoring the next generation of women physicians.

*The home of Dr. Bertha Van Hoosen and the Van Hoosen Farm have been preserved as the Rochester Hills Museum in Michigan. For more information, visit www.rochesterhills.org

Photos Captions (Next Page):

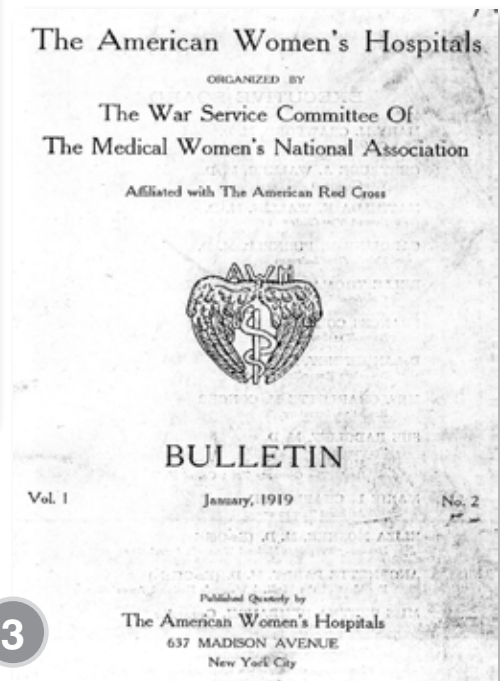
1. Bertha Van Hoosen, MD (1863 – 1952)
2. Early AMWA Board Members – Bertha Van Hoosen, MD standing 2nd to the right, Esther Pohl Lovejoy, MD standing far right
3. Bulletin of the American Women's Hospitals
4. AWH Health Center, Greece
5. Medical Women's National Association Meeting (May 11, 1936)
6. Gloria Steinem (L), Dr. Gayatri Devi (C), and Dr. Diana Galindo (R) at AMWA's 97th Annual Meeting
7. AMWA Leaders with President of Chile Dr. Michelle Bachelet, then Executive Director of UN Women
8. Faces of AMWA on-line exhibition



1



2



3



4



5



6



7

Faces of AMWA

8



Current AMWA Initiatives

Advocacy Work to Promote Women's Health and Healthcare Reform

Alcohol Awareness and Education

Annual Meeting for Education, Networking, and Mentoring

Awards Annual Awards – AMWA Presidential Recognition Award, Elizabeth Blackwell Award, Woman in Science

Award, Bertha Van Hoosen Award, Lila Wallis Women's Health Award, Camille Mermod Award, Exceptional Mentor Award

American Women's Hospitals Service

Breast Cancer Education and Awareness

Diversity and Inclusion

Faces of AMWA Exhibition

Fellowship Program

Gender Equity

Health Education for both Patient and Providers

Human Sex Trafficking Initiatives

Revival of the *Journal of the American Medical Women's Association* (JAMWA) in digital form

Legacy Exhibit at Drexel University School of Medicine, Philadelphia

Mentoring of Pre-Medical Students, Medical Students, Residents, and Young Physicians

Obesity initiatives

Preventive Medicine

Smoking Cessation

Speaker's Bureau

Women's Health Education and Advocacy

American Women's Hospitals Service

The American Women's Hospitals Service (AWHS) was established in 1917 as an extension of the War Committee of the Medical Women's National Association (later renamed the American Medical Women's Association). The war service committee had been unsuccessful in persuading the government to grant women physicians commissioned status in the military. Not to be deterred, the women physicians went overseas to the war ravaged countries, and through AWHS, built hospitals and cared for those who were displaced due to war. After the war, AWHS remained overseas to provide aid during religious persecution, genocide, and natural disasters. During the Great Depression, AWHS ran mobile

health clinics in rural America to provide desperately needed healthcare. Over the years and with changing times, the goal of AWHS has been to help fund clinics worldwide that provide care and support the advancement and empowerment of women and children in underserved areas. Specifically, AWHS has sought to foster sustainable and innovative projects in programs both abroad and at home that inspire individuals and work to make a difference in diverse communities. AWHS also provides yearly travel grants for medical students and residents who work abroad in areas of need.

Medical Women's International Association

The Medical Women's International Association (MWIA) is an international non-governmental organization (NGO) representing women doctors from all six continents. The association was founded in 1919 by AMWA past president, Dr. Esther Pohl Lovejoy and is one of the oldest professional bodies at the international level. It is non-political, non-sectarian, and non-profit making.

MWIA Goals:

- To promote the communication and cooperation of Medical Women regardless of race, religion or political views in order to develop friendship and understanding between Medical Women throughout the world.

- To actively work against gender related inequalities in the medical profession between female and male doctors including career opportunities and economical aspects.
- To offer medical women the opportunity to meet upon questions concerning the health and well-being of humanity.

AMWA is a member organization of MWIA, so all members of AMWA are members of MWIA.

MWIA's Theme for the 2013-2016 Triennium: Prevention and Elimination of Domestic and Sexual Violence.

AMWA Leadership Directory

2013–2014 Board Of Directors

President

Eleni Tousimis, MD, FACS

President-Elect

Farzanna S. Haffizulla, MD, FACP

Past-President

Gayatri Devi, MD, FACP

Secretary

Roberta Gebhard, DO

Treasurer

Laurel A. Waters, MD, FCAP, FASCP

Directors

Neelum Aggarwal, MD
Anne E. Burke, MD, MPH
Elinor Christiansen, MD
Bea Desper, MD
Suzanne Harrison, MD, FAAFP
Florence Haseltine, MD, PHD
Laura McCann, MD
Theresa Rohr-Kirchgraber, MD
Julie Welch, MD, FAAEM

Kanani Titchen, MD

Resident Division President

Tara Renna, MD

Resident Division President-Elect

Marissa Orenstein

Student Division President

Jacqueline Wong

Student Division President-Elect

2014–2015 Board Of Directors

President

Farzanna S. Haffizulla, MD, FACP

President-Elect

Theresa Rohr-Kirchgraber, MD

Past-President

Eleni Tousimis, MD, FACS

Secretary

Roberta Gebhard, DO

Treasurer

Shahnaz Fatteh, MD

Directors

Neelum Aggarwal, MD
Elinor Christiansen, MD
Bea Desper, MD
Helane Fronek, MD
Suzanne Harrison, MD, FAAFP
Florence Haseltine, MD, PHD
Dyani Loo, MD
Laura McCann, MD
Chemen Tate, MD

Tara Renna, MD

Resident Division President

Heather Leisy, MD

Resident Division President-Elect

Jacqueline Wong

Student Division President

Marissa Orenstein

Student Division Past-President

AMWA Management Team

Robin Turner

Senior Account Executive

AMWA In-House Team

Eliza Chin, MD, MPH

Executive Director

Katherine He

Administrative Assistant / Special Projects Coordinator

Contact Us

12100 Sunset Hills Road, #130

Reston, VA 20190

www.amwa-doc.org

Phone (703) 234-4069

Fax (703) 435-4390

associatedirector@amwa-doc.org

Committee And Task Force Chairs Physician And Student Co-Chairs

Archives Committee

Elinor Christiansen, MD

Awards Committee

Nancy Church, MD

AWHS Committee

Dyani Loo, MD

Laura Helfman, MD

Neelum Aggarwal, MD

Kimberly Faldetta

Erika Hissong

Breast Cancer Task Force

Eleni Tousimis, MD, FACS

Nicole Sandhu, MD, PHD

Minetta Lui, MD

Centennial Committee

Theresa Rohr-Kirchgraber, MD

Nancy Church, MD

Farzanna Haffizulla, MD, FACP

Diana Galindo, MD

Faces Of Amwa Exhibition Initiative

Eliza Lo Chin, MD, MPH

Katherine He

Fellowship Program Task Force

Farzanna S. Haffizulla, MD, FACP

Suzanne Harrison MD

Finance Committee

Laurel Waters, MD, FCAP, FASCp

Fundraising

Farzanna Haffizulla, MD, FACP

Shahnaz Fatteh, MD

Brooke Oster

Gender Equity Task Force

Linda Brodsky, MD

Roberta Gebhard, DO

Global Outreach Committee

Satty Keswani, MD

Governance Committee

Laura McCann, MD

Human Trafficking Task Force

Suzanne Harrison, MD

Holly Atkinson, MD

Yaowaree Leavell

Daniel Miller

Membership Committee

Nicole P. Sandhu, MD, PHD

Marissa Orenstein

Mentoring Task Force

Neelum Aggarwal, MD

Julie Welch, MD

Lauren Nicholls

Physicians Against The Trafficking Of Humans (PATH)

Kanani Titchen, MD

Samia Osman

Megan Reinders

Physician Branch Development

Laura McCann, MD

Policy And Advocacy Committee

Omega Silva, MD

Norma Jo Waxman, MD

Kate Pryor

Preventive Medicine Task Force

Farzanna S. Haffizulla, MD, FACP

Victoria Silverman

Program Committee

Eleni Tousimis, MD, FACS

Florence Haseltine, MD, PHD

Amanda Xi

Rachel Teat

Public Relations Committee (PRC)

Anne Burke, MD

Lanalee Araba Sam, MD

Rebecca Johnson-Paben

Publications Committee

Aleena Paul

Resident Division

Kanani Titchen, MD

Tara Renna, MD

Senior Physicians Committee

Elinor Christiansen, MD

Satty Keswani, MD

Social Media

Amanda Xi

Cecily Koppuhza

Karen Poirier-Brode, MD

Student Division

Marissa Orenstein

Jacqueline Wong

Website Committee

Florence Haseltine, MD, PHD

Women's Health Working Group

Theresa Rohr-Kichgraber, MD

Amanda Tashjian

Liaisons To Affiliated Organizations

AMA House Of Delegates

Nancy Church, MD
Neelum Aggarwal, MD

AMA Women Physicians Congress

Theresa Rohr-Kirchgraber, MD

Broward County Department Of Health

Farzanna S. Haffizulla, MD, FACP
South Florida – Broward County Physician Ambassador

Commission to End Health Care Disparities

Susan Ivey, MD
Neelum Aggarwal, MD

Futures Without Violence

Roberta Gebhard, DO

Healthy Women Advisory Board

Eliza Chin, MD, MPH
Jan Werbinski, MD
Kim Templeton, MD
Theresa Rohr-Kirchgraber, MD

Medical Women's International Association (MWIA)

Padmini Murthy, MD
Satty Keswani, MD

Mission Critical Health

Farzanna S. Haffizulla, MD, FACP
Host, Anchor, Medical Correspondent

Planned Parenthood

Rebekah L. Williams, MD, MS

Perry Initiative

Kim Templeton, MD

Sex and Gender Women's Health Collaborative

Theresa Rohr-Kirchgraber, MD

Vision 2020: Institute Of Women's Health and Leadership — Drexel College of Medicine

Farzanna S. Haffizulla, MD, FACP – Florida National Delegate
Eliza Lo Chin, MD, MPH – California National Delegate

Resident Leadership 2013 – 2014

President	Kanani Titchen, MD
President Elect	Tara Renna, MD
Secretary	Elizabeth Berdan, MD
Treasurer	Sara Hyoun, MD
Recruitment	Cheryl Silverbrook, MD
Awards	Arthy Saravanan, MD

Women's Advocacy	Brittany Jackson, MD
Family Advocacy	Maya Bass, MD
ARQ Editor-In-Chief	Claire Roden, MD
Global Health	Savitha Bonthala, MD Mary Rysavy, MD Dyani Loo, MD
Advisor	Leah Dickstein, MD

Resident Leadership 2014 – 2015

President:	Tara Renna, MD
President Elect:	Heather Leisy, MD
Secretary:	Vanessa Al Rashida, MD
ARQ Editor-In-Chief:	Claire Roden, MD
Treasurer:	Arthy Saravanan, MD
Awards Chair:	Dana Bonaminio, MD
Recruitment Chair:	Marissa Orenstein, MD
Conference Chairs:	Parin Patel, MD Kanani Titchen, MD

Advocacy Chairs:	Shalena Garza, MD Angeline Wang, MD Heather Foreman, MD
Global Health Chairs:	Meredith Clement, MD Dyani Loo, MD Mary Rysavy, MD
Director, Region 1:	Unfilled
Director, Region 2:	Brittany Jackson, MD
Director, Region 3:	Ekemini Akan, MD
Director, Region 4:	Heather Foreman, MD
Director, Region 5:	Brandie Williams, MD

Medical Student Leadership 2013–2014

Executive Committee

Marissa Orenstein - President
Jackie Wong - President-Elect
Komal Paladugu - Secretary
Samia Osman - Treasurer

National Committee Chairs

Kate Pryor - Advocacy Chair
Carey Wickham - Awards Chair
Rachel Teat - Conference Chair
Amanda Xi - Conference Chair
Kathryn Anderson - External Relations Chair
Oluwatoni Aluko - Global Health Chair
Judy Gbadebo - Global Health Chair
Lauren Nicholls - Program Chair
Yaowaree Leavell - Recruitment Chair
Parin Patel - Undergraduate Branch Recruitment Chair

Regional Directors

Safiyah Hosein - Region 1 Director CT, ME, MA, NH, RI, VT
Aleena Paul - Region 2 Director NJ, NY
Elizabeth Brigham - Region 3 Director DC, DE, MD, PA, VA, WV
Allison Holder - Region 4 Director FL, GA, NC, SC
Amanda Fletcher - Region 5 Director AL, LA, MS, TN, The Caribbean
Allison Wilcox - Region 6 Director IL, IN, KY, MI, OH
Jessica Sheth - Region 7 Director AR, IA, KS, MN, MO, NE, ND, OK, SD, WI
Lisa Wadowski - Region 8 Director AZ, CO, ID, MT, NM, NV, TX, UT, WY
Katrina McKellips - Region 9 Director AK, CA, HI, OR, WA

Student Division Programming Committee

Amanda Xi, Conference Co-Chair
Rachel Teat, Conference Co-Chair
Sonia Bhandari
Mary Leemputte
Marissa Orenstein
Megan Orlando
Samia Osman
Jacquelyn Shaw
Carey Wickham
Andrea Winter
Jackie Wong

Pre-Medical Student Leadership

Secretary	Jennie Luu
Treasurer	Kathryn Miller
Region 1	Kathryn Miller
Region 2	Ginny Devi-Chou
Region 3	Manwa Abdelmuhsen
Region 4	Jameelah Henderson
Region 5	Katelyn Wray
Region 6	Meaghan Martinez-Palmer
Region 7	Kaitlyn Simmons
Region 8	Kaitlyn Simmons
Region 9	Jennie Luu

AMWA Presidents

1915-1918 Bertha Van Hoosen, MD
1918-1919 Angenette Parry, MD
1920-1921 Martha Tracy, MD
1921-1922 Elizabeth Bass, MD
1922-1923 Grace Kimball, MD
1923-1924 Kate C. Mead, MD
1924-1925 Katherine C. Manion, MD
1925-1926 Anna E. Blount, MD
1926-1927 Frances E. Rose, MD
1927-1928 Elizabeth B. Thelberg, MD
1928-1929 Louise Tayler-Jones, MD
1929-1930 Ellen C. Potter, MD
1930-1931 Olga Statsny, MD
1931-1932 L. Rosa H. Gantt, MD
1932-1933 Esther Lovejoy, MD
1933-1934 Mary O'Malley, MD
1934-1935 Lena K. Sadler, MD
1935-1936 S. Josephine Baker, MD
1936-1937 Catharine Macfarlane, MD
1937-1938 Mabel M. Akin, MD
1938-1939 Kate B. Karpeles, MD
1939-1940 Nelle S. Nobel, MD
1940-1941 Elizabeth Mason-Hohl, MD
1941-1942 Emily D. Barringer, MD
1942-1943 Helena T. Ratteman, MD
1943-1944 Zoe A. Johnston, MD
1944-1945 Alice S. Wooley, MD
1945-1946 Helen Johnston, MD
1946-1947 Mabel E. Gardner, MD
1947-1948 Mabel E. Gardner, MD
1948-1949 Elise S. L'Esperance, MD
1949-1950 Dorothy Wells Atkinson
1950-1951 Elizabeth Waugh, MD
1951-1952 Amey Chappell, MD
1952-1953 Evangeline Stenhouse, MD
1953-1954 Judith Ahlem, MD
1954-1955 Camille Mermod, MD
1955-1956 Esther C. Marting, MD
1956-1957 Camille Mermod, MD
1957-1958 Elizabeth S. Kahler, MD
1958-1959 Katherine W. Wright, MD
1959-1960 Jessie L. Brodie, MD
1960-1961 Claire F. Ryder, MD
1961-1962 Edith P. Brown, MD
1962-1963 Ruth Hartgraves, MD
1963-1964 Rosa Lee Nemir, MD
1964-1965 Bernice Sachs, MD
1965-1966 Margaret J. Schneider, MD
1966-1967 Elizabeth McGrew, MD
1967-1968 Alice Chenoweth, MD

1968-1969 Laura E. Morrow, MD
1969-1970 Josephine E. Renshaw, MD
1970-1971 Minerva S. Buerk, MD
1971-1972 Frances K. Harding, MD
1972-1973 Ruth Fleming, MD
1973-1974 Margaret P. Sullivan, MD
1974-1975 Carolyn S. Pincock, MD
1975-1976 Catherine Anthony, MD
1976-1977 Claudine M. Gay, MD
1977-1978 Charlotte Kerr, MD
1978-1979 A. Lois Scully, MD
1979-1980 Joanne Linn, MD
1980-1981 Vivian Harlin, MD
1981-1982 Christine Haycock, MD
1982-1983 Anne Barlow Ramsay, MD
1983-1984 Lila Kroser, MD
1984-1985 Clair Callan, MD, MBA
1985-1986 Constance Battle, MD
1986-1987 Mary Jane England, MD
1987-1988 Doris Bartuska, MD
1988-1989 Lila Wallis, MD, MACP
1989-1990 Susan Stewart, MD
1990-1991 Roselyn Epps, MD
1991-1992 Lillian Gonzalez-Pardo, MD
1992-1993 Leah Dickstein, MD
1993-1994 Kathryn C. Bemann, MD
1994-1995 Diana Dell, MD, FACOG
1995-1996 Jean Fourcroy, MD, PhD
1996-1997 Debra Judelson, MD, FACC, FACP
1997-1998 Sharyn Lenhart, MD
1998-1999 Clarita Herrera, MD
1999-2000 Catherine Henry, MD
2000-2002 Omega Silva, MD, MACP
2002-2003 Elinor Christiansen, MD
2003-2004 Lynn Epstein, MD
2004-2005 Diane Helentjaris, MD
2005-2006 Carolyn Webber, MD
2006-2007 Susan Ivey, MD, MHSA
2007-2008 Diana Galindo, MD, FACP, AGSF
2008-2009 Claudia Morrissey, MD, MPH
2009-2010 Beatrice S. Desper, MD
2010-2011 Eliza Lo Chin, MD, MPH
2011-2012 Mary Guinan, PhD, MD
2012-2013 Gayatri Devi, MD, FACP
2013-2014 Eleni Tousimis, MD, FACS
2014-2015 Farzanna S. Haffizulla, MD, FACP



Dr. Linda Brodsky Memorial Fund

The Dr. Linda Brodsky Memorial Fund honors Dr. Brodsky's memory by endorsing her passions for gender equity, medical student success, clinical research and the advancement of women physicians. Funds will be used to support the Brodsky Memorial Scholarship and related initiatives promoting gender equity in medicine including but not limited to medical student projects, relevant research and quality of care.

AMWA is a 501(c)(3) organization so all donations are tax deductible to the extent allowable by law.

**Donations may be made online at www.amwa-doc.org/donate/
or by mail: 12100 Sunset Hills Road, #130
Reston, VA 20190**

Linda Brodsky, MD (1952-2014)

Dr. Linda Brodsky was the daughter of Zelda and Milton Brodsky. She is survived by her devoted husband Saul Greenfield and their three children Jeremy, Dana and Rebecca.

Born May 25, 1952 in Long Island, New York, Linda graduated from Bryn Mawr College with honors in 1974 and then Women's Medical College of Pennsylvania, now Drexel University. She completed her residency in ENT at Albert Einstein College of Medicine. In 1983, she moved to Buffalo, NY, where she took a full-time faculty position in the State University of New York at Buffalo Medical School and at the Children's Hospital of Buffalo (now Women and Children's Hospital of Buffalo), later becoming director of the hospital's Center for Pediatric Otolaryngology and Communication Disorders.

Linda's accomplishments as a researcher, an educator and a surgeon were extensive. She published a number of award-winning papers and earned the title of Tenured Full Professor of Otolaryngology and Pediatrics at the University of Buffalo School of Medicine—one of only 12 women to have achieved this ranking at the time. She authored or co-authored over 100 scientific papers in peer reviewed journals and 27 book chapters. Her book on pediatric swallowing and feeding disorders, *Pediatric Swallowing and Feeding: Assessment and Management*, written with her colleague, Joan Arvedson, PhD, is a classic in the field, and she was one of the few Buffalo-based members of the Triological Society, an elite organization that only admits the most academically accomplished ENT surgeons.

Linda introduced the "Brodsky Classification" of tonsillar disease, a diagnostic tool used around the world. She was Primary Investigator or Co-Investigator in over two million

dollars of industry and federally funded research. She served on the editorial boards of several pediatric ENT journals, including *The International Journal of Pediatric Otorhinolaryngology*, *Acta Otolaryngologica* and *The Journal of Respiratory Diseases*. She was an invited keynote speaker and visiting professor at many national meetings and academic departments of otolaryngology. She served on the boards of the ENT section of the American Academy of Pediatrics, the Society for Ear, Nose and Throat Advances in Children (SENTAC) and the American Society for Pediatric Otolaryngology. Most recently she served on the Women in Otolaryngology Committee of the American Academy of Otolaryngology, which was designated the model committee for 2013 by the Academy.

She has received numerous awards, including the Sylvan Stool award for excellence in teaching by SENTAC. Later this spring she is to receive the Tucker Award for her excellence and contributions to pediatric laryngology by the American Laryngological Association. At the Women and Children's Hospital of Buffalo she established an advanced training fellowship in pediatric ENT, which ended after her departure from the directorship. During her tenure at Children's, she and colleagues were honored by New York State for quality improvement work. Her devotion to her patients and tenacity in advocating for their care was legendary, as evidenced by the hundreds of letters and cards from families she received over the years expressing gratitude. Her professional accomplishments are recorded in her ebook *Only She Who Attempts the Absurd Can Achieve the Impossible*, which is available on her personal website www.LindaBrodskyMD.com.

Of everything Linda accomplished in her 30-year career, many are most familiar with that which she endured and achieved over the last 15. In 2007, she emerged from a nearly decade-long Federal court battle, in which she was the plaintiff, claiming gender-based discrimination and Equal Pay Act violations against her two employers, which ended in settlement. Once Linda realized that gender discrimination had not gone away, but had rather simply taken on a new form, she founded Women MD Resources, her organization dedicated to helping women physicians navigate the medical work environment. Linda was an extraordinary advocate for the mentorship of younger women in medicine, often acting as a mother figure to those whom she chose and those who chose her.

Over the last five years, Linda had begun mapping out what it would take for healthcare organizations to better cater not only to women, but also to a whole new generation of physicians. She envisioned flexible schedules, a humane approach to residency, and an increase in women in leadership positions.

Linda and her husband were engaged philanthropically in the community and were major financial backers of the Kadimah Jewish Day School in Buffalo. As a proponent of a life balanced between work, family and other pursuits, Linda enjoyed Scrabble marathons, ocean swimming near the family home in Martha's Vineyard, competing in tennis, and helping lead the Busy Women's Book Club in Buffalo. It wasn't that she only chose to do things that she loved; it's that she chose to love the things she was committed to doing. According to her family, Linda's parting gift in life was her approach to living it.

Congratulations to an Outstanding Alumna

The University of Miami Leonard M. Miller School of Medicine extends its warmest congratulations and best wishes to Miller School alumna **Farzanna Haffizulla, M.D., FACP**, the new president of the American Medical Women's Association.

Dr. Haffizulla's inspiring achievements are a proud reflection of the dedication of the Miller School community to advancing medicine and enhancing human health and well-being.



UNIVERSITY OF MIAMI
MILLER SCHOOL
of **MEDICINE**

www.med.miami.edu



Indiana University School of Medicine
Department of Obstetrics and Gynecology
congratulates Dr. Chemen Tate
on her appointment to the
AMWA Board of Directors



CHEMEN TATE, M.D.



**Congratulates
Newly-elected AMWA President**



**Dr. Farzanna Haffizulla
CONGRATULATIONS!**

MIND & MOBILITY offers custodial home care and outpatient physical therapy services overseen by an elite team of health care professionals. We provide a health system that promotes, restores and maintains the complete health of each individual patient.

**2655 E. Oakland Park Blvd, Suite 5
Ft. Lauderdale, FL 33306
954-630-3131**

www.mindandmobility.com

Accredited by CHAP



On behalf of the Albany Medical College Alumni Association, Janet E. Gargiulo, M.D., president of the Association, congratulates Aleena Paul, Albany Medical College Class of 2016, on receiving the Anne C. Carter Award for her outstanding student leadership and work on the local and national level to support women in medicine and the mission of AMWA.

We are also proud to recognize AMWA President Eleni A. Tousimis, M.D., Albany Medical College Class of 1996, for her exemplary leadership.

Westside Regional Medical Center **CONGRATULATES** new AMWA President, Dr. Farzanna Haffizulla on her election win!



Westside Regional Medical Center is an accredited hospital with a full line of specialized health services. We were the **FIRST IN THE STATE OF FLORIDA** to receive full Atrial Fibrillation Certification status from the Society of Cardiovascular Patient Care (SCPC). Our team of dedicated professionals works together to deliver the highest quality healthcare to our patients and the communities we serve.

8201 W. Broward Blvd., Plantation, FL 33324 • 954-473-6600 • westsideregional.com



Aleena Paul (left) and Dr. Eleni A. Tousimis

ALBANY MEDICAL COLLEGE *Congratulates*

Aleena Paul, '16, for receiving the Anne C. Carter Leadership Award in recognition of her exceptional student leadership, and salutes the American Medical Women's Association and its leader, Albany Medical College Alumnus **Eleni A. Tousimis, M.D., '96**, for working to improve women's health and empower women as leaders in medicine.



ALBANY MEDICAL COLLEGE

43 New Scotland Avenue | Albany, New York 12208 | www.amc.edu



UNIVERSITY of MARYLAND SCHOOL OF MEDICINE

E. Albert Reece, MD, PhD, MBA

*Vice President for Academic Affairs, University of Maryland
John Z. and Akiko K. Bowers Distinguished Professor and
Dean, University of Maryland School of Medicine*

Congratulates

Claudia R. Baquet, MD, MPH

Distinguished Scholar. Tireless Advocate.



**2014 AMWA
Woman in Science**

<http://medschool.umaryland.edu/HSFIII>

Congratulations

*Farzanna S. Haffizulla, M.D.
Cleveland Clinic Internal Medicine '03'*

*Congratulations on your appointment as the American
Medical Women's Association President!*



AMWA Branch 30 Congratulates
Katherine He
Camille Mermod Award Recipient

Thank you Katherine for your hard
work and dedication to AMWA!



www.BusyMomMD.com

Created and founded by Farzanna Haffizulla, MD FACP



**Learn the art of work-life balance from
AMWA PRESIDENT, Dr. Farzanna Haffizulla**

Nationally recognized expert and speaker on Work-Life balance

*Author of "Harmony of the Spheres: Career, Family and Community- A Working
Mom's Lessons of Love, Strength and Balance"*

*Coming soon: Read Dr. Haffizulla's latest book on achieving Personal and Professional
Success*

Congratulations on your Presidency with AMWA



Farzanna S. Haffizulla MD FACP

-Drs. Joanne and Edward Dauer

Congratulations to the most loving mom,
wife and daughter on your
2014-2015 Presidency with AMWA
Farzanna S. Haffizulla MD FACP
We are so proud of you!!



Jason, Zarina, Anisa, Nadia, Adam, Pappy
and Grandma

Women in Medicine Conference

August 6-10, 2014 – Ogunquit, Maine

Web: <http://www.womeninmedicine.org> Email: wim.doctors@gmail.com

A Women's Health Symposium

Women in Medicine (WIM) is a 501c3 charitable organization which sponsors an annual retreat and CME conference for lesbian and other sexual minority female physicians, medical students and their female partners. WIM 2014 marks the 31st annual event. The yearly conference is a forum for discussion of front-line research on women's health issues, as well as lesbian, bisexual, gender-queer and transgender women's issues. Topics vary across a broad range of medical specialties, and are appropriate for both generalists and specialists.



There also are non-medical seminars of interest to all, as well as rejuvenating social activities for children and adults alike. Essential networking and mentoring opportunities abound, with a special focus on the needs of medical students and residents. This is the only medical conference where partners are not only invited to attend, but are also welcomed and encouraged to participate and learn from the high quality medical and non-CME presentations. We are proud to present a broad range of medical, ethical and social issues relevant to today's world.

One of the highlights is the always entertaining fundraiser for the Lesbian Health Fund (LHF) which was started at a WIM meeting in 1992. LHF supports research related to the health of lesbians and their families. Over \$754,000 has been granted for these purposes.

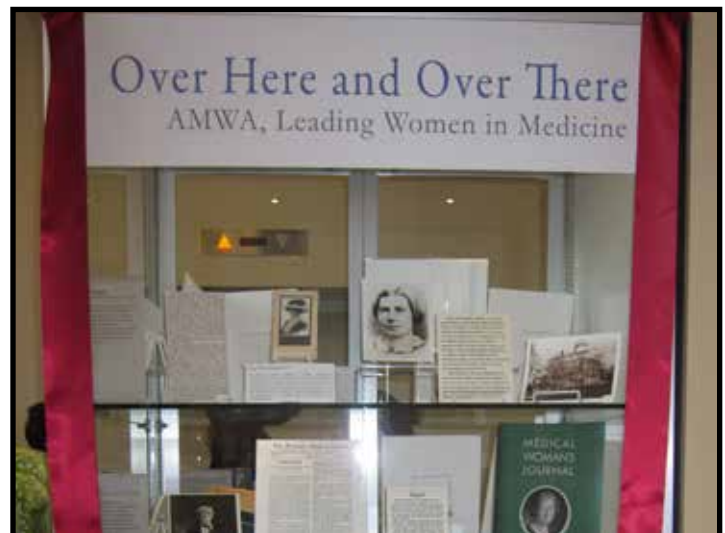
WIM welcomes new participants! If you are new to the conference, there are many opportunities to interact, from networking at meals (start by sitting with board members who will be hosting tables on Wednesday night), to the small group experiences and social functions. First time physician attendees receive a 10% discount.

This year's conference will be held at the beautiful Cliff House Resort & Spa in Ogunquit, Maine.

A Special Thanks to the AMWA 2013-2014 Board of Directors, Committee and Task Force Chairs and Members, Resident Division Leadership, Student Division Leadership, Pre-Medical Division Leadership, Branch Presidents, and AMWA Staff for all of their hard work this year.

AMWA is expanding and growing because of your dedication and commitment.

We anticipate a wonderful 99th Anniversary Year and a Spectacular Centennial Celebration next year.



Visit AMWA's Legacy Exhibit in Philadelphia

Drexel University Legacy Center

2900 West Queen Lane
Philadelphia, PA 19129
archives.drexelmed.edu

**Congratulations AMWA on your
venerable history of mentoring and
empowering women physicians!**

Karen E. Davidson, Esquire
Health Law Practice
Telephone/text: 610-308-7725
Email: karen@md-healthlaw.com

You are invited to visit our exhibitor booth to:
"Ask the Health Care Attorney"

Morgan Stanley

On behalf of Morgan Stanley
Private Wealth Management,
Shawn Fowler and Maxwell Bull support AMWA



**CONGRATULATIONS
Dr. Farzanna Haffizulla
WISHING YOU A YEAR OF SUCCESS
AS AMWA's
NATIONAL PRESIDENT!**

**Pharmacogenetics
HOW A PATIENT'S GENETIC MAKE UP AFFECT
THE SUCCESS OF THEIR MEDICATION
(954)383-1897**



MAS | MEDICAL
ADVISORY
SERVICES
RIGHT MEDICINE AT THE RIGHT DOSE FOR THE RIGHT PATIENT

The Society for Women's Health Research
congratulates our founder

Florence Haseltine **2014 Lila A. Wallis Award Honoree**



TRANSFORMING SCIENCE
SWHR
SOCIETY FOR WOMEN'S HEALTH RESEARCH

The Society for Women's Health Research (SWHR) is the thought leader in research on biological differences in disease and is dedicated to transforming women's health through science, advocacy and education.

SWHR.org

Honoring Dr. Linda Brodsky **Recipient of AMWA's 2014 Bertha Van Hoosen Award**

Linda was a beloved friend, mentor, colleague, and champion for women in medicine nationwide. She will be dearly missed. AMWA will continue to champion her causes so that her dream can be realized – that gender equity can be a reality for every woman physician and medical student in the country.



women**MD**resources

Congratulations on your 2014-2015
Presidency with national AMWA
Farzanna S. Haffizulla MD FACP



All our love and best wishes from
Papa, Gigi, Jason and all of us at
Medical Associates of Tamarac

The South Florida Chapter of AMWA
congratulates **Dr. Farzanna Haffizulla** on
her national Presidency of AMWA and
Dr. Shahnaz Fatteh on her election win
as national AMWA Treasurer!



Wishing you the very best
As you forge ahead!

Notes:

[illegible]

U N I V E R S I T Y O F C E N T R A L F L O R I D A

C O N G R A T U L A T I O N S

Farzanna S. Haffizulla, MD, FACP
AMERICAN MEDICAL WOMEN'S ASSOCIATION
2014 PRESIDENT



www.UCF.edu



AMERICAN HERITAGE SCHOOL

KNOWLEDGE, INTEGRITY, COMPASSION



Congratulations! Dr. Haffizulla

American Heritage School congratulates AMWA President, Dr. Farzanna Haffizulla as she leads the American Medical Women's Association into its centennial year! Dr. Haffizulla is a proud Pre-med faculty member, teaching Honors Organic Chemistry to American Heritage Pre-med students!

For Students Serious About a Career in Medicine— The Heritage Pre-medical Program



The American Heritage Pre-medical Program is designed to provide students with the opportunity to experience courses and activities that are not normally available in a high school setting. On a daily basis, classes are taught by physicians with current or previous experience in their chosen fields.

From ninth through twelfth grades, students follow a course of study designed to equip them for college with science courses unique to a high school program. In addition, students who complete the courses serve an internship, providing them with extensive experiences with physicians in various specialties.

Through expert instruction, real life experiences and a unique curriculum, students gain special insight into the medical profession.

In addition to extensive course preparation in medicine, students fulfill the academic requirements needed for admission to top-tier colleges and universities.

FREE EXPRESS BUS TRANSPORTATION

**Aventura, Big Cypress, Coral Springs, Doral, N.E. & S.E. Ft. Lauderdale,
Hollywood/Hallandale, Hollywood Seminole Reservation,
Miami Lakes, Miami Shores,
E. & W. Parkland, Weston, Pembroke Pines and Miramar**



College Preparatory School for PK3—Grade 12

12200 W. Broward Blvd. • Plantation, FL • 954-472-0022

6200 Linton Blvd. • Delray Beach, FL • 561-495-7272

Visit us at www.ahschool.com

Accredited by SACS, AISF, and Middle States